



**TREASURE CHEST**  
**1 9 4 0**

**Northwest  
Misc**

**NW  
373.7973  
ROGERS  
v.1940**

**DOWNTOWN  
37413312497920**





EX LIBRIS



W. H. H. 1874





. . . *Ex Libris*



THE  
TREASURE  
CHEST  
1940

*Published by the*  
ASSOCIATED STUDENTS

—of—

JOHN R. ROGERS HIGH SCHOOL  
SPOKANE, WASHINGTON

*Dorthy Fuller, Editor*

*Assistants*

Bernadine Thomas  
Willis Clem

Bill Alfstad  
Jim Young

## *Dedication*

----

This 1940 Treasure Chest is dedicated to American ideals and Democracy, the two great principles to which the youth of America is devoted. Most of the nations of the world today are feeling the pressure of groups attempting to lead society away from democratic forms. Totalitarianism has spread over half of the world and its propaganda is paraded before the youth of the other half. America and the Americans are convinced that only a government by the people and for the people can survive to the utmost. We, as Americans, feel that the interests of man cannot best be sensed through a form of government that draws upon the mental process of one man or a small group of men for its salvation. We, the youth of America, know that the greatest federal democracy in the world can only exist as long as freedom of speech and press are advocated.





. . . *Dedication*





## *School Song--- Hats Off to Rogers*

-----

Hats off to Rogers High, our alma mater.  
We pledge our loyalty, each son and daughter,  
We'll sing her loud praises to the sky,  
Holding her name on high,  
As each gallant vic'try is won for Rogers High.  
Say, gang, we'll  
Sing for the fame she's won,  
We fear no other,  
Her place is in the sun,  
We'll love her ever,  
O, then it's  
Hats off to Rogers High, our alma mater.  
As each gallant vic'try is won for Rogers High.



J. D. MEYER  
*Principal*

## *Administration*



E. R. JINNETT  
*Vice-Principal*



First Row: Jinnett, Meyer, Van Austene, Flatebo, Simet, Mowery, Smith, Stevens, Kalinowski, LeFevre, Byrne, and Perkins. Second Row: Smith, Doolittle, Harmon, Swenson, Kapek, Herbert, Budwin, and Hughes. Third Row: Richardson, Blaisdell, Saltz, Summers, Minzel, Morrison, Herrington, McMahan, Weymouth, Herrington, and Bovee. Fourth Row: Johnson, Gregson, Hitchcock, Davidson, Finnegan. Fifth Row: Starr, Barton, Hubbard, Elsensohn, Eaman, Hubbell, Ellingsen, Becher, Coburn, MacGown, Benjamin, and Mikkelsen.

## Faculty

### ADMINISTRATION

J. D. Meyer, Principal  
 E. R. Jinnett, Vice-Principal  
 Rose Finnegan, Girls' Adviser  
 Monroe Hubbell, Boys' Adviser  
 Carolyn F. Kapek, Librarian  
 Edith H. Broberg, Study Hall  
 Ernestine Kalinowski, Study Hall  
 Marjorie Corbit, Secretary  
 Frances Cowles, Stenographer and Book Clerk

### ENGLISH

Joseph M. Tewinkel, Head  
 Theodora Budwin  
 Ingered Flatebo  
 Clarissa Harmon  
 Elizabeth Herbert  
 Ray G. Hubbard  
 Paul MacGown  
 Doris Mowery  
 Hazel Stevens  
 Faye C. Weymouth

### COMMERCIAL

A. P. Coburn, Head  
 Monroe Hubbell  
 Rene G. McMahan  
 Jack Mooberry  
 Bernice Simet  
 Ethel Van Austene

### SCIENCE

L. W. Saltz, Head  
 J. W. Black  
 James Eaman  
 Carl Ellingsen  
 Irvin R. Minzel

### MUSIC

Glen B. Starr  
 Blanche Hill Swenson

### MATHEMATICS

Walter E. Doolittle, Head  
 W. L. Herrington  
 J. L. Purdy  
 Russell C. Summers

### SOCIAL SCIENCE

L. T. Byrne, Head  
 E. T. Becher  
 James Elsensohn  
 Iva Morrison  
 A. Louise Smith

### FOREIGN LANGUAGES

Marie Bovee  
 Marion G. LeFevre

### MANUAL AND FINE ARTS

A. R. Barton  
 F. C. Hughes  
 C. E. Russum  
 F. Dale Smith

### HOME ECONOMICS

Edna Herrington  
 Charste Mikkelsen  
 Lucille Youngman

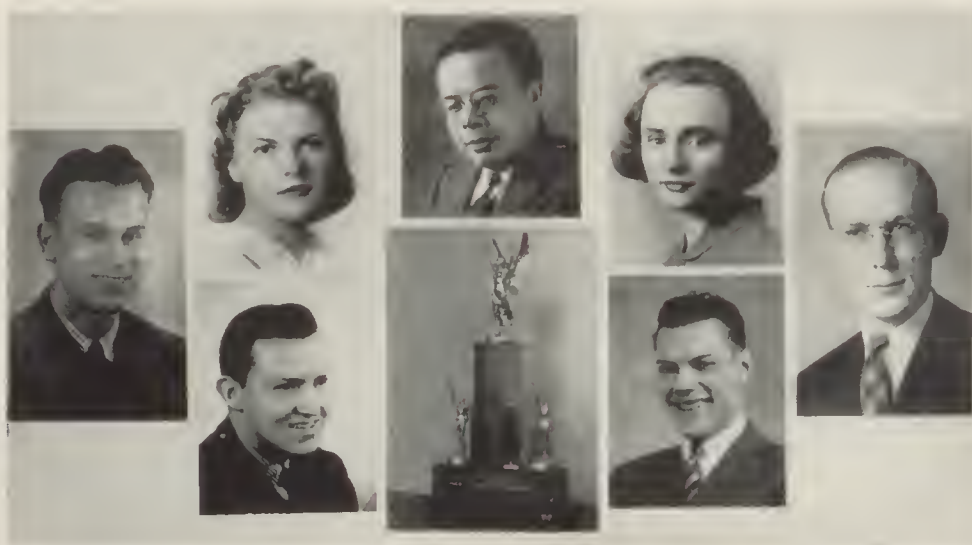
### GIRLS' PHYSICAL EDUCATION

Mabel Perkins

### BOYS' PHYSICAL EDUCATION AND DIRECTOR OF ATHLETICS

M. J. Benjamin





PFEFFER

PETERSON  
KLUDTFJELSTAD  
TROPHYFREEBORG  
ODEGARD

ANDERSON

## Alumni Association

-----

Louis Fjelstad	President
John Kludt	Vice-President
Lola Peterson	Corresponding secretary
Loren Odegard	Publicity manager
Woodrow Pfeffer	Treasurer
Art Anderson	Chancellor
Dorothy Freeborg	Historian

### HONORARY MEMBERS

James A. Burke  
E. R. Jinnett  
L. T. Byrne  
W. E. Doolittle  
John D. Meyer  
Iva Morrison

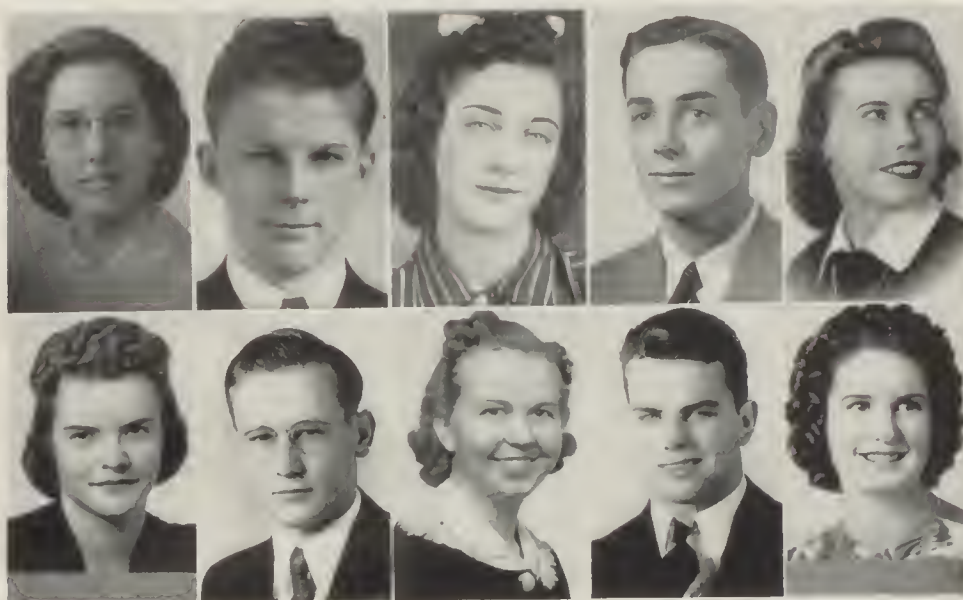
E. T. Becher  
Carl Quackenbush  
Theodora Budwin  
Ray G. Hubbard  
F. Dale Smith  
Anna Jo Toole

● Among the activities of the Alumni Association are included a banquet, held February 14, and three dances. This organization is the only one of its kind in the city and its purpose is to hold the alumni closer together. It has done a great deal to help send the debaters east. The group meets once a month at Rogers. It was organized last summer.



. . . Classes



GOBLE  
BYSEGGERYOUNG  
MOEAPPA  
JOHNSONDIEDIKER  
LEWISGAINES  
THOMPSON

## January Class Leaders

Donald Diediker .....	Prexy
Jeanette Johnson .....	Valedictorian
Clifford Lewis .....	Athlete
Betty Gaines .....	Drum Majorette
Isla Bysegger .....	Dramatics
Shirley Thompson .....	Girls' League
George Young .....	Boys' Federation
Sandra Appa .....	Student Council
Francis Moe .....	Journalist
Effie Goble .....	Salutatorian

## January Senior Honor Roll

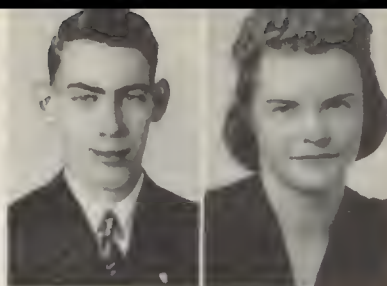
Eugene Manning  
Jeanette Johnson  
Effie Goble  
Donald Diediker  
Isla Bysegger  
Harold Dempsey  
Beverly Wilson  
Wilbert Clifford  
Shirley Thompson

Rex Hansen  
Marjorie Kendrick  
Robert Anderson  
Betty Gaines  
Isabel Miller  
Elaine Miller  
Maxine Elliott  
Violamae Anderson  
Mildred Patterson

Jack Eller  
Petronella Burkhardt  
Lois Hodge  
Carl Nygaard  
Margaret Miller  
Dorothy McCafferty  
Hope Johnston  
Marguerite Dickey



BOB ANDERSON "Andy"  
*Regal*  
 National Honor Society  
 President, Radio Club (4)  
 Technician, Radio Club (3)  
 Secretary, Radio Club (2)  
 Vice-President, Radio (3)  
 Radio Club (2, 3, 4)  
 Football (1)  
 Track (1, 2)  
 Senior Prom Committee  
 Public Address Operator



ISLA BYSEGGER "Bike"  
*Bemiss*  
 National Honor Society  
 President, Jr. Dramatic (2)  
 Vice-President, Footlights (3)  
 Vice-President, Girls' League  
 Vice-President, Home Room  
 Treasurer, Home Room  
 Social Chairman, Footlights  
 Junior Dramatics (1, 2)  
 Footlights (3, 4)  
 "C" Club (2, 3)  
 O. G. A. (3, 4)  
 Tennis (3)  
 "The Buccaneers"  
 "Harmony Hall"  
 "Hollywood Extra"  
 "Show-Off"  
 "The Tavern"  
 "Abie's Irish Rose"  
 "Once in a Lifetime"  
 "Tovarich"  
 "You Can't Take It with You"  
 Girls' Glee Club  
 Choir (1, 2, 3, 4)  
 Chairman, Staging and Puppetry  
 Big Sister (3, 4)



VIOLA ANDERSON "Vi"  
*Hamilton*  
 Girls' League Rep. (3)  
 Cosmic Club (4)  
 French Club (3, 4)  
 G. A. C. (3)  
 Four Star Club (1, 2)  
 Swimming (2, 3)  
 Skating (2, 3)  
 Volleyball (1, 2, 3)  
 Basketball (1, 2, 3)  
 Tumbling (1, 2)  
 Tennis (1, 2)  
 Chorus (1)  
 Girls' League Honor Roll  
 Senior Honor Roll  
 Girls' Gym Office  
 Big Sister



MARGARET ANGEL "Angel"  
*Bemiss*  
 Rogers Service Club (3, 4)  
 Baseball (1, 2)  
 Volleyball (1)  
 Girls' League  
 "The Buccaneers"  
 "Hollywood Extra"  
 Study Hall Checker (2, 3, 4)  
 Public Utility Department



HILEN BROOKS "Skip"  
*Columbia*  
 Pirette (1, 2, 3, 4)  
 Girls' League  
 Big Sister (3, 4)  
 Study Hall Checker (2)  
 Hall Patrol (4)

SANDRA APPA "Sandra"  
*Arlington*  
 Student Council President  
 Home Room President  
 Student Council Representative (2, 4)  
 G. A. C. (2, 3, 4)  
 Pep Club (3, 4)  
 Tumbling (1, 2, 4)  
 Basketball (1, 2, 3)  
 Volleyball (1, 2, 3)  
 Chairman First Aid Department  
 Nurse's Office (2)  
 President U. S. History 1 Class (3)



DORIS CARLSON "Dode"  
*Hamilton*  
 President Home Room  
 G. A. C. (3, 4)  
 Secretary, G. A. C.  
 Girls' League Representative  
 Service Club  
 Volleyball (1, 2, 3)  
 Baseball (1, 2, 3)  
 Basketball (1, 2, 3)  
 Tennis (2, 3)  
 Captain Tennis Team (2)  
 "The Buccaneers"  
 "Hollywood Extra"  
 "Harmony Hall"  
 Glee Club (1, 2)  
 Triple Trio (2)  
 Choir (2, 3, 4)  
 Prom Committee

DOROTHY ARMSTRONG "Dody"  
*Arlington*  
 Big Sister (3, 4)  
 Pirette Girl (3, 4)  
 Room Representative (1)  
 Harding Debate (3, 4)  
 Four Star (2)  
 Basketball (2)  
 Skating (2)  
 Cub Staff  
 Girls' League Con  
 Senior Prom Committee  
 Glee Club (3, 4)  
 Girls' League Chorus  
 Study Hall Checker (1)  
 Christmas Program



MARGARET CASPERSON "Migs"  
*Whitman*  
 O. G. A. (4)  
 Basketball (2)  
 Baseball (1)  
 Skating (2)  
 Swimming (2)  
 Volleyball (1)  
 Girls' League Representative  
 Student Council (2)  
 Girls' League

ELAINE BERNSTEIN "Berny"  
*Arlington*  
 Rogers Service Club (2, 3, 4)  
 Secretary, Home Room (3)  
 Home Economics Club (3, 4)  
 "R" Club (4)  
 G. A. C. Club (4)  
 Pirette Girls (2, 3)  
 Volleyball (1)  
 Baseball (1)  
 Tumbling (2)



WILBERT CLIFFORD "Will"  
*Libby Junior High*  
 National Honor Society  
 President Home Room (3)  
 Vice-President Home Room (4)  
 Boys' Federation  
 Play Hour Committee  
 Christmas Project Committee

NELLIE BURKHARDT "Pet"  
*Havermale Junior High*  
 Secretary, German Club (2)  
 German Club (1, 2)  
 Tennis (1, 2, 3)  
 Basketball (1, 2)  
 Baseball (1, 2)  
 Volleyball (1, 2)



WILLIAM COZZA "Willie"  
*Hamilton*  
 President, Handicraft (3)  
 Home Room Secretary (2)  
 "R" Club (3, 4)  
 President, Speech Club  
 Golf (3, 4)  
 Christmas Buying Committee  
 Boys' Federation

RUTH CROCKER  
*Arlington*  
 French Club (2, 3)  
 Cosmic Club (3, 4)



GERALDINE FAY DAVIS "Gerty"  
*Longfellow*  
 President, Home Room (1)  
 Secretary, Home Room (1)  
 Cosmic Club  
 Baseball (1, 2)  
 Basketball (1)  
 Puppetry (1)  
 Big Sister

FLOYD DeBOLT  
*Longfellow*  
 Student Council  
 Representative  
 "R" Club (4)  
 Track (4)  
 Boys' Federation  
 Christmas Project Committee

MARGUERITE DICKEY "Maggie"  
*Longfellow*  
 French Club (2, 3, 4)  
 Volleyball  
 Basketball  
 Badminton  
 Senior Honor Roll  
 Glee Club  
 "The Buccaneers"  
 Girls' League Representative  
 Tutor  
 Student Council  
 Hall Patrol

DONALD DIEDIKER "Don"  
*Cooper*  
 National Honor Society  
 President, Home Room  
 President, Senior Class  
 Secretary, Home Room  
 Secretary, Student Council  
 Cosmic Club (3, 4)  
 Math Club (3, 4)  
 Junior Dramatic Club (1, 2)  
 German Club (2, 3)  
 Football Manager (3)  
 Boys' Federation  
 Fire Squad

HELEN DUKICH "Helen"  
*Lewis and Clark*  
 Girls' League

DALE EASTBURG "Suede"  
*Cooper*  
 Chairman Playhour  
 Committee  
 Vice-President, Home Room  
 Secretary Home Room  
 Track (3)  
 Band (1, 2, 3, 4)  
 President Band Council  
 Orchestra (3)  
 Student Council

FERN EDMONSON  
*Bemis*  
 Girls' League

VIVIAN JEAN ELLIS "Shorty"  
*Longfellow*  
 Rogers Service Club (3, 4)  
 "C" Club (2, 3, 4)  
 Vice-President, "C" Club  
 Hall Patrol  
 Study Hall Checker (2, 3, 4)  
 Secretary of Geography  
 Committee  
 Public Utility Committee

JACK ELLER "Jocko"  
*Hamilton*  
 National Honor Society  
 Vice President, Junior  
 Dramatic Club  
 Secretary, Harding Debate  
 Treasurer, Montero Club  
 Jr. Dramatic Club (1, 2)  
 Harding Debate (3, 4)  
 Montero Club (2, 3, 4)  
 "R" Club (3, 4)  
 Cosmic Club (3)  
 Football (1, 2, 3, 4)  
 Track (1, 2, 3, 4)  
 Boys' Federation  
 Constitution Committee  
 Senior Prom Committee

ELMA FISH "Turpie"  
*Whitman*  
 Girls' League

BETTY GAINES "Stub"  
*Franklin*  
 Rogers Service Club  
 National Honor Society  
 Vice-President, O. G. A. (4)  
 Student Council  
 Representative (2, 3)  
 G. A. C. (2, 3, 4)  
 O. G. A. (3, 4)  
 Pep Club (2, 3)  
 Volleyball (1, 2, 3, 4)  
 Basketball (1, 2, 3, 4)  
 Tumbling (1, 2, 3)  
 Baseball (1, 2, 3)  
 Skating (3, 4)  
 Pirettes (1, 2, 3, 4)  
 Song Leader (1, 2, 3)  
 Drum Majorette (3, 4)  
 Girls' League Honor Roll  
 (1, 2, 3)  
 Study Hall Checker (2, 3)  
 Big Sister (3)  
 Dance Committee (4)

REX HANSEN "Rags"  
*Longfellow*  
 Senior Honor Roll  
 National Honor Society  
 President, Home Room (2)  
 Student Council  
 Representative  
 Cosmic Club (3)  
 Football (2, 4)  
 Track (1)  
 Cub Staff (4)  
 Record Staff (4)  
 Christmas Project  
 Committee  
 Nominating Committee, Boys'  
 Federation  
 Senior Prom Committee  
 Secretary, Science and  
 Adventure

EFFIE GOBLE  
*Hamilton*  
 National Honor Society  
 President, Math Club (4)  
 Math Club (3, 4)  
 O. G. A. (4)  
 G. A. C. (3, 4)  
 Baseball (1, 2, 3)  
 Volleyball (1, 2, 3)  
 Skating (2, 3)  
 Basketball (2, 3)  
 Swimming (2, 3, 4)  
 Manager, Baseball (4)  
 Big Sister (3, 4)  
 Student Council (4)

CHARLOTTE HARKER "Chi"  
*Hamilton*  
 Camera Club (3, 4)  
 Basketball (1, 2)  
 Pirettes (2, 3, 4)  
 Baseball (1, 2)  
 Song Leader (3, 4)  
 Volleyball (1, 2)  
 Hall Patrol (4)  
 First Aid (3)

LOIS HODGE "Hart"  
*Whitman*  
 G. A. C. (2, 3, 4)  
 French Club (2, 3, 4)  
 Basketball (1, 2, 3, 4)  
 Tumbling (1, 2, 3)  
 Volleyball (1, 2, 3, 4)  
 Baseball (1, 2, 3, 4)  
 Skating (2, 3)  
 Swimming (2, 3)  
 Tennis (2)  
 Drum Majorette (3, 4)  
 Pirette (1, 2, 3, 4)  
 Song Leader (2, 3, 4)  
 Girls' League Honor Roll  
 (2, 3)  
 Gym Office (1)  
 Big Sister (2)  
 Dance Committee (2)  
 Girls' League Style Show

EDWARD HARRIS "Ed"  
*Cooper*  
 Treasurer, French Club (3)  
 Secretary, French Club (3)  
 Vice-President, French Club  
 (4)  
 French Club (2, 3, 4)  
 "R" Club (4)  
 Track Manager (4)  
 Playhour Committee  
 Boys' Federation

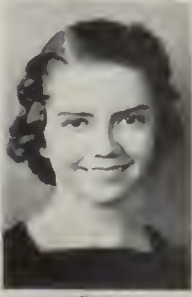
NELLIE HUNT "Nell"  
*Cooper*  
 Hall Patrol (3, 4)  
 Secretary, Cosmic Club (3)  
 President, Cosmic Club (4)  
 Secretary, Home Room (2)  
 Cosmic Club (3, 4)  
 G. A. C. (3, 4)  
 Baseball (1, 2, 3)  
 Swimming (1)  
 Skating (2)  
 Volleyball (1, 2, 3)  
 Basketball (1, 2, 3)  
 Big Sister (3)

ALICE JAWORT "Susie"  
*Regal*  
 National Honor Society  
 Girls' League Representative  
 Home Economics Club  
 (3, 4)  
 Volleyball (1)  
 Orchestra (2, 3, 4)  
 Girls' League Chorus  
 (2, 3, 4)  
 Nurse's Office (4)

JEANETTE JOHNSON  
*Whitman*  
 Valedictorian  
 National Honor Society  
 Rogers Service Club  
 President G. A. C. (4)  
 French Club (3, 4)  
 Baseball (1, 2, 3, 4)  
 Basketball (1, 2, 3, 4)  
 Volleyball (1, 2, 3)  
 Swimming (1, 2, 3)  
 Skating (1, 2, 3)  
 Badminton (3)  
 Big Sister (3, 4)  
 Chairman Big Sister (4)  
 Gym Office (3)  
 Adviser's Office (4)  
 Girls' League Honor Roll  
 Project Committee of  
 Student Council  
 Girls' League Representative  
 Senior Prom Committee

HOPE JOHNSTON  
*North Central*  
 Rogers Service Club  
 Art Club (3, 4)  
 "Harmony Hall"  
 "Hollywood Extra"

TONY JULIANO "Tony"  
*Libby Junior High*  
 Sergeant-at-Arms Home Room  
 (3)  
 Student Council  
 Representative  
 Boys' Federation  
 Play Hour Committee



CLAUDE KALER "Baron"  
*Whitman*  
 Baseball (3)

MADLYN KIEFLER "Madge"  
*Regal*  
 Home Economics Club (3, 4)  
 Girls' League

MARJORIE KENDRICK "Marge"  
*Whitman*  
 Rogers Service Club  
 National Honor Society  
 Treasurer, Girls' League  
 Treasurer, G. A. C. (4)  
 Secretary, Senior Class  
 President, O. G. A. (4)  
 President, Home Room (2)  
 G. A. C. Club (3, 4)  
 O. G. A. Club (4)  
 Basketball (1, 2, 3, 4)  
 Swimming (2)  
 Baseball (1, 2, 3)  
 Skating (2)  
 Volleyball (1, 2, 3)  
 Student Council (4)  
 Girls' League Representative  
 (3)  
 Big Sister (3, 4)  
 Prom Committee

LESTER LEAMER "Singer"  
*Arlington*  
 Manager (1)  
 Boys' Federation  
 Chorus (1, 2, 3)  
 Orchestra (1, 2)  
 "Hollywood Extra"

MARY KIRBY "Kirb"  
*Willard*  
 Girls' League

EARL LEVAN "Lee"  
*Bemis*  
 Boys' Federation

CLIFFORD LEWIS "Lou"  
*Hamilton*  
 Sergeant-at-Arms, Home Room  
 (2)  
 "R" Club  
 Football (1, 2, 3, 4)  
 Baseball (1, 2)  
 Track (3, 4)  
 Fire Squad  
 Christmas Committee  
 Decorations, Senior Prom  
 Committee  
 Chairman Nominating  
 Committee  
 Bland Medal "39"

DOROTHY McCAFFERTY "Mac"

Whitman

Rogers Service Club  
G. A. C. (1)  
Volleyball (3)  
Baseball (3)  
Basketball (2)  
Girls' League Singing  
Department  
Mothers' Tea (2)  
Christmas Program  
P. T. A. Program  
Dancing Department (1)  
Secretary, Public Utilities  
Checker, Study Hall  
(1, 2, 3, 4)  
Hostess, Front Hall  
Handy Andy, Gym Office  
Decorations Committee,  
Senior Prom



ISAREL MILLER

Arlington

Hall Patrol (3, 4)  
Sergeant-at-Arms, Art Club  
(4)  
Home Room Representative  
(2, 3)  
Vice-President, Home Room  
(2)  
Art Club (3, 4)  
Cosmic Club (3, 4)  
Volleyball (1, 2, 3)  
Basketball (1, 2, 3)  
Baseball (1, 2, 3)  
G. A. C. Club (3, 4)  
Senior Prom Committee (4)  
Big Sister (3, 4)



FRANCIS MOE

Regal

Cub Staff  
Record Staff (4)  
Copy Chief, Record  
Boys' Federation

EUGENE MANNING "Bud"

Whitman

National Honor Society  
Senior Honor Roll  
Vice President Senior Class  
(4)  
Press Agent of Cosmic Club  
(4)  
Cosmic Club (3, 4)  
Student Council  
Representative  
Boys' Federation



ED C. MOORE

Libby Junior High

Boys' Federation

BERNICE MARIER "Bernie"

St. Xavier

Rogers Service Club  
Sub-Chairman, Dramatics  
Department  
Girls' League



DOROTHY MORAN

Hamilton

Usherette  
Pirettes (3, 4)  
Baseball (1, 2)  
Hall Patrol (4)  
Big Sister (3, 4)  
Girls' League (1, 2, 3, 4)  
Christmas Project  
Committee  
Assistant Roll Checker, Home  
Room

MERTEN MERRILL "Mert"

Libby Junior High

President, Camera Craft (4)  
Boys' Federation  
Record Staff (4)  
Cub Staff (4)



HARRIET MORGAN

Bemis

Vice-President, Home Room  
Treasurer, Home Room  
Baseball (1, 2)  
Basketball (1, 2)  
Orchestra (1, 2, 3, 4)

JUNE MEYERS

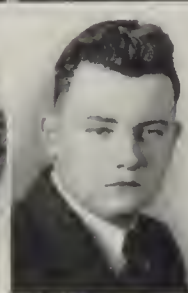
Hamilton

French Club (4)  
Hall Patrol (3, 4)  
Secretary, First Aid  
Department

MARGARET MILLER "Mugs"

Hamilton

Junior Dramatic Club (2)  
Footlights Club (3, 4)  
Spanish Club (2)  
Cosmic Club (4)  
Baseball (1, 2)  
Volleyball (1, 2)  
Basketball (1, 2)  
Senior Prom Committee  
"Once in a Lifetime"  
Big Sister  
Girls' League



TED MUSCOTT

Yakima

Boys' Federation

VIOLET MILLER

Bemis

Girls' League



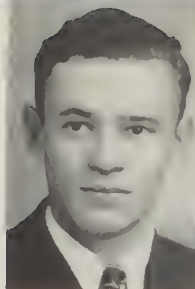
DONALD RICHARD OLSON "Ole"

Arlington

German Club (2, 3)  
Football (3)  
Boys' Federation  
Student Council (3)  
Time Contest Winner (2, 4)  
Hall Patrol (4)



CLAIRE PARKIN "Parky"  
Gonzaga  
Boys' Federation  
Hall Patrol



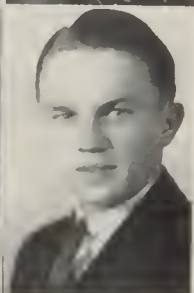
JAMES D. SALING "Jim"  
North Central  
Boys' Federation

LILLIAN OSTLUND "Princess"  
St. Xavier  
Harding Debate (3, 4)  
Girls' League (1, 2, 3, 4)  
Girls' League Chorus  
(1, 2, 4)  
Girls' Glee Club (4)  
Cub Staff (3)  
Record Staff (4)  
Dramatics, Christmas  
Program  
Girls' League Honor Roll  
(1, 2, 4)  
Honor Roll (1, 4)



MILDRED ROGERS "Milly"  
Loyan  
President, Home Room (4)  
Girls' League Representative  
(3)  
Student Council (2, 3)  
Secretary, "C" Club (3, 4)  
"C" Club (3, 4)  
Tumbling (2, 3)  
Baseball (2, 3)  
Basketball (1, 2, 3)  
Golf (4)  
Volleyball (1, 2, 3, 4)  
Dancing Department (2, 3, 4)  
Puppetry Department (1)  
Hall Patrol (4)  
Senior Prom Committee (4)  
Christmas Committee (4)

MILDRED PATTERSON "Milly"  
Libby Junior High  
Math Club (3, 4)  
O. G. A. (4)  
Spanish Club (4)



HAROLD SCHINDLER "Baron"  
Whitman  
Rogers Service Club  
Home Room President (1, 3)  
Boys' Federation

LUCILLE PETRETEE "Pete"  
Columbia  
Rogers Service Club (4)  
Secretary, Harding Debate  
(4)  
Home Economics Club (4)  
Inter-school Con  
Senior Prom Committee  
Cub Staff  
Handicraft Department  
Home Room Representative  
(2)  
Gym Office  
Library Worker  
Miss Finnegan's Office  
Dramatics Department



MARJORIE SHORES "Margie"  
Whitman  
Four Star Club (1)  
Badminton (1)  
Basketball (1, 2)  
Skating (1)  
Baseball (1, 2)  
Girls' League  
Pirettes (1, 2, 3)

JOHN PIKE "Piker"  
Columbia  
Vice-President, Home Room  
(3)  
Art Club (4)  
Assistant Art Editor, Rogers  
Record (4)  
Boys' Federation



ALBERT SIMPSON "Al"  
Regal  
Boys' Federation  
Orchestra

MARGARET REIDER "Skippy"  
Regal  
Rogers Service Club  
Home Room Representative  
(3)  
Drum and Bugle Corp (3)  
Pirettes (1)



JOHN STEIN "Curly"  
Arlington  
Vice-President, Radio Club  
Secretary, Radio Club  
Sergeant-at-Arms, Radio Club  
Vice-President, Cosmic Club  
Sergeant-at-Arms, Rifle Club  
Radio Club (1, 2, 3, 4)  
Cosmic Club (3, 4)  
Rifle Club (1, 2)  
Manager, Football (1, 2)  
Manager, Baseball (1, 2)  
Dramatics  
Paddle Squad  
Hall Patrol  
Yell Leader  
Nomination Committee, Boys'  
Federation

VERA RODOLPH "Vie"  
Hamilton  
Rogers Service Club  
Drum and Bugle (3, 4)  
Girls' League  
Library Assistant (1, 2, 3, 4)



GORDON STEPIKE  
Hamilton  
Vice-President, Home Room  
(3)  
German Club (3)  
Tennis (2, 3, 4)  
Decorations Committee

**NORMA STOKKI** "Norma"  
Hamilton  
Treasurer, Home Room (1, 3)  
Secretary, Home Room (2)  
Basketball (1)  
Tennis (1)  
Pirettes (1, 2)

**RICHARD TAYLOR** "Dick"  
Logan  
Secretary, Home Room (2, 3)  
Boys' Federation

**DONALD GORDON TERRY** "Don"  
Lewis and Clark  
Boys' Federation

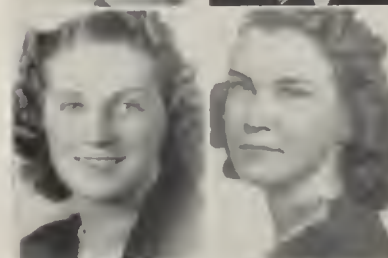
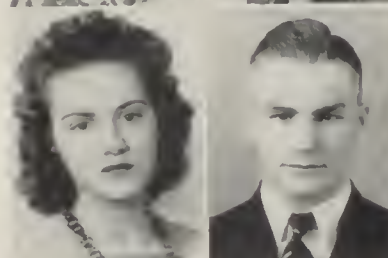
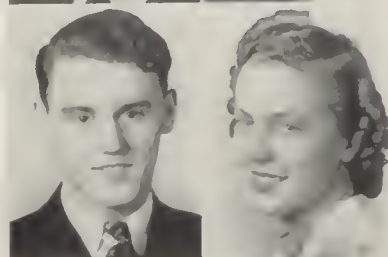
**SHIRLEY THOMPSON** "Rusty"  
Beniss  
President, G. A. C. (4)  
President, French Club (4)  
Secretary, National Honor Society (3)  
President, Home Room (3)  
French Club (3, 4)  
Rogers Service Club (3, 4)  
"R" Club (3, 4)  
Cosmic Club (3, 4)  
National Honor Society (3, 4)  
Tennis (1, 2, 3, 4)  
Basketball (1)  
Baseball (1, 2)  
Volleyball (1, 2, 3)  
Tumbling (1)  
Swimming (3)  
Skating (3)  
Girls' League Representative (1, 2)  
Secretary, Big Sister Department  
President Girls' League  
Chorus (1, 2)  
Spring Sports Queen (4)

**THULA TRONE** "Connie"  
Longfellow  
Vice-President, Footlights (3)  
Club (4)  
Secretary, Footlights (3)  
Treasurer, "C" Club (2)  
Footlights Club (3, 4)  
Junior Dramatic Club (1, 2)  
Tumbling (2, 3)  
Basketball (2, 3)  
Volleyball (1, 2)  
"C" Club (2, 3, 4)  
Golf (4)  
Girls' League Dancing Department (2, 3, 4)  
Hall Patrol (4)  
Senior Prom Committee (4)

**MARY TUCKER** "Babe"  
Columbia  
Baseball (1, 3)  
Basketball (1, 2)  
Skating (4)  
Pirettes (1, 2, 3, 4)  
Song Leader (1)  
President, Home Room (4)  
Vice President, Home Room (3)  
Student Council (3)  
Home Room Representative (2)  
Big Sister (3, 4)  
Main Office Worker (4)

**CHRISTINE UNGARI** "Chris"  
Libby Junior High  
Hall Patrol  
Big Sister

**GEORGE YOUNG**  
Hamilton  
Student Council (4)  
President, Boys' Federation  
President, Home Room (3)  
Junior Dramatic Club (1, 2)  
Montero Club (3, 4)  
Math Club (3)  
Harding Debate Club  
"R" Club  
Baseball (1)  
Football (1, 2, 3, 4)  
Golf (2)  
"Tovarich" (3)  
Fire Squad (4)  
Debate (2, 3)  
Senior Prom Committee  
Christmas Committee



**DOROTHEA WILLIAMS** "Dot"  
Libby Junior High  
Hall Patrol  
Big Sister

**ELAINE WALLER**  
Hamilton  
National Honor Society  
Vice-President, Junior Dramatic Club (1)  
Junior Dramatic Club (1, 2)  
Harding Debate Club (3)  
Cosmic Club (3, 4)  
Baseball (1)  
Swimming (2)  
"You Can't Take It With You"  
"Tovarich"  
"Hollywood Extra"  
Spring Sports Princess  
Adviser's Office (3, 4)  
Dance Committee  
Senior Prom Committee  
Gym Office (2)  
Girls' League Honor Roll (1, 2, 3, 4)  
Senior Honor Roll  
Secretary Home Room (2)

**JUANITA WHITMORE** "Nita"  
Regal  
Vice-President, American Government  
Treasurer, "C" Club  
Usherette  
Pirettes (1, 2)  
Baseball (1, 2)  
Basketball (1)  
Swimming (1)  
Big Sister  
Gym Office  
Christmas Project Committee  
Roll Checker, Home Room

**KATHERINE WEST** "Kay"  
Regal  
Girls' League Representative (1)  
Student Council (2, 3)  
Home Room President (3)  
President Art Club (4)  
Pep Club (3, 4)  
Tumbling (1, 2)  
Baseball (1, 2)  
Tennis (1, 2)  
Pirettes (1, 2, 3, 4)  
Drum Majorette (3, 4)  
Spring Sports Queen Contest (4)  
Secretary, Girls' League Dramatics Department (2)

**DON WILLIAMS** "Don"  
Haverly Junior High  
Hall Patrol (3)  
All City Football Team  
Captain, Football Squad  
Vice-President, "R" Club (4)  
Sergeant-at-arms, Boys' Federation (3)  
Vice-President, Boys' Federation (4)  
Art Club (4)  
"R" Club (2, 3, 4)  
Montero Club (2, 3, 4)  
Football (2, 3, 4)  
Baseball (2, 3, 4)  
Basketball (3, 4)  
Senior Prom Committee (4)  
Student Council (3, 4)

**BEVERLY WILSON** "Bet"  
Longfellow  
Rogers Service  
National Honor Society  
Secretary "C" Club (3)  
Secretary O. G. A. (4)  
G. A. C. Club (2, 3, 4)  
Volleyball (1, 2, 3)  
Basketball (1, 2, 3)  
Baseball (2, 3, 4)  
Swimming (3)  
Skating (2)  
Big Sister (3, 4)  
Main Office (3, 4)  
Nurse's Office (2, 3)  
Pirettes (2, 3, 4)  
Song Leader (3, 4)

**MARGARET WILSON** "Maggie"  
Willard  
Girls' League



## *January Class History*

---

● Many outstanding and talented students entered Rogers High School as freshmen in January, 1936.

Leaders in all fields have been found among them. Shirley Thompson was elected Girls' League president, Sandra Appa, president of Student Council, and George Young, president of Boys' Federation.

Don Diediker was elected senior A class president; Eugene Manning, vice president; Beverly Wilson, secretary.

## *January Commencement*

---

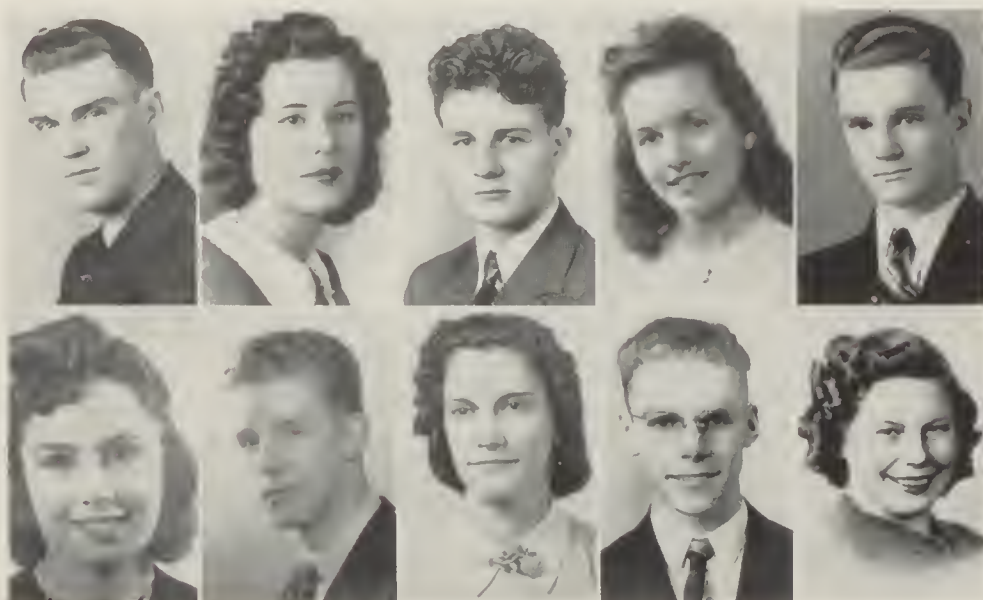
● As a different type of commencement program, leaders of the January graduating class presented speeches on the subject of Youth.

Effie Goble, Jeanette Johnson, George Young, and Don Diediker were the speakers.

Dr. Frederick Fischer of the School Board presented the diplomas.

## *Senior Autographs*

---

ALFSTAD  
MURPHYFULLER  
PICKENSFRANKLIN  
ELLISCLARKE  
MOBLEYJOHNSON  
AUSTRING

## June Senior Leaders

Jeannette Ellis	Valedictorian
Warren Franklin	Debate
Julienne Austring	Editor of Record
Bob Johnson	Athlete
Madeline Murphy	Drum Majorette
Bill Alfstad	Drum Major
Dorothy Fuller	Editor of Treasure Chest
Vincent Pickens	Class Prexy
Maxine Clarke	Salutatorian
Walter Mobley	Dramatics

## June Senior Honor Roll

Jeannette Ellis  
Maxine Clarke  
Vincent Pickens  
Maxine Drabe  
Mary Denman  
Kathryn Thomson  
Ray Roestel  
Bette Mochel  
Gullan Dahl  
James Kludt  
Doris Carney  
Ida Ungari

Kenneth Tang  
Bob True  
Willis Clem  
Bill Alfstad  
Doris Olson  
Norman Tews  
Evelyn Carpenter  
Dorothy Fuller  
Gordon French  
Grace Anderson  
Bernadine Thomas  
Adele Sutton

Julienne Austring  
Bob Johnson  
Robert Shepler  
Genevieve Stahl  
Alfred Bays  
Catherine Strasser  
Warren Franklin  
Beryl Bowers  
Alma Schiewe  
Jim Young  
Elaine Anderson  
Alan Taylor

GERALD ADAMS "Flash"  
Hamilton  
Hall Patrol (2)  
"R" Club (3, 4)  
Track (1, 3, 4)  
Boys' Federation

WILLIAM STEVE ALFSTAD "Bill"  
Bemiss  
National Honor Society  
Sergeant-at-Arms, Montero Club (3)  
Band, Jr. Director (4)  
Secretary, Handicraft (3)  
Footlights Club (3, 4)  
Montero Club (2, 3, 4)  
Pep Club (2, 3)  
"R" Club (4)  
Camera Club (4)  
Basketball (1, 2, 3, 4)  
Tennis (1, 4)  
Baseball (1, 2, 3)  
Golf (4)  
Cub Editor (4)  
Assistant Editor Annual (4)  
Publicity Director, Annual (4)  
Drum Major (4)  
"You Can't Take It With You"  
Hall Patrol (1, 2, 3)  
Fire Squad (4)  
Boys' Federation Representative (3)  
Record Staff (4)  
Home Room President (3)  
Student Council (1, 2)  
Home Room Secretary (3)  
Queen Contest Committee  
Christmas Project (3)  
Senior Honor Roll

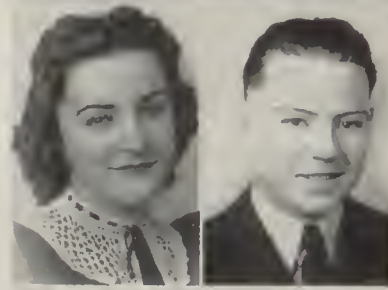
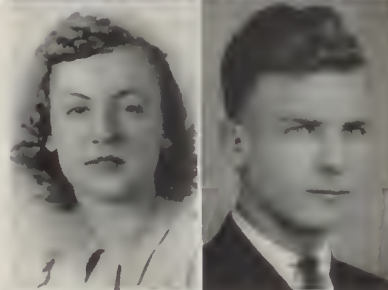
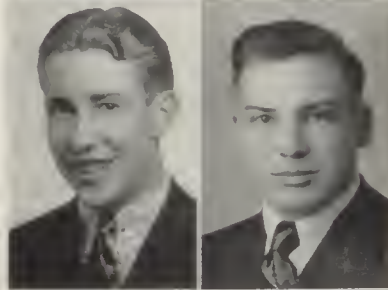
ROY WILFRED ALLEN "Al"  
Bemiss  
President, Home Room (1, 2, 4)  
Secretary, Home Room (1, 3)  
Sergeant-at-Arms, Home Room (2)  
"R" Club (2, 3, 4)  
Spanish Club (4)  
Football (3, 4)  
Track (1, 2, 3, 4)  
Basketball (1, 2)  
Hall Patrol (2, 3)  
Rogers Patrol

ELAINE ANDERSON "Andy"  
Bemiss  
Senior Honor Roll  
Vice-President, Home Room  
Secretary, Home Room  
Social Service Secretary (4)  
Girls' League  
Record Exchange  
Big Sister

CLIFFORD ANDERSON "Andy"  
Longfellow  
Hall Patrol (2, 3)  
Boys' Federation

GRACE ANDERSON "Fritz"  
Mead  
Senior Honor Roll  
Rogers Service Club  
Student Council (2)  
Vice-President, Home Room  
President, Home Room (4)  
Basketball (1, 2)  
"Buccaneers"  
"Hollywood Extra"  
"Harmony Hall"  
Spring Festivals (1, 2, 3, 4)  
Glee Club  
Senior Choir

ANITA ARMSTRONG "Nita"  
Arlington  
Secretary-Treasurer, Footlights Club  
Big Sister (2)  
Junior Dramatic Club (1, 2)  
Footlights Club (3, 4)  
Volleyball (1, 2)  
Pirettes (2, 3)  
Tumbling (1)  
"Once in a Lifetime"  
"Tovarich"  
Junior Dramatic Con  
Footlights Con  
Girls' League Con  
2 Girls' League plays  
Girls' League Honor Roll (2)



JEANNETTE ELLIS "Janet"  
Longfellow  
Valedictorian  
National Honor Society  
Senior Honor Roll  
President, Junior Statesmen Club (4)  
Secretary, Junior Statesmen Club (4)  
President, Home Room (4)  
Treasurer, Home Room (2, 3)  
Chairman, Crochet Department (1)  
Junior Statesmen Club (4)  
Cosmic Club (4)  
Math Club (3, 4)  
Badminton (4)  
Volleyball (1)  
Cub Staff  
Record Staff (4)  
Hall Patrol Captain  
Secretary, Hall Patrol  
Annual Staff (4)  
Chairman, Handbook Committee  
Senior A Executive Committee

JULIENNE AUSTRING "Julie"  
Coulce City High  
National Honor Society  
Senior Honor Roll  
Pep Club  
Basketball (2)  
Editor, Rogers Record (4)  
Glee Club (2)  
Annual Staff (4)  
Cub Staff (3)  
Record Staff (4)

ALFRED BAYS "Al"  
Bemiss  
National Honor Society  
Senior Honor Roll  
President, Math Club (4)  
Sergeant-at-Arms, Cosmic Club (4)  
Math Club (4)  
Cosmic Club (4)  
Junior Statesmen Club (4)  
Football (3)  
Boys' Federation (1)  
Constitution Committee (4)  
Pamphlet Committee (4)  
Play Hour Committee (4)

EARL BERNSTEIN "Bernie"  
Arlington  
Baseball (1)  
Hall Patrol (2, 3, 4)  
Student Council  
Boys' Federation

BOB BLAKE "Bob"  
Libby Junior High  
Vice-President, Art Club (3)  
Art Club (3, 4)  
Boys' Federation  
Cub Staff (1)

DENNIS BOJE  
Gonzaga  
Boys' Federation

DON BROADHEAD "Broady"  
Regal  
Fire Squad (3, 4)  
Student Council (2)  
President, Home Room (1, 3)  
President, Montero Club (4)  
Vice-President, Boys' Federation  
Home Room Representative (3)  
Montero Club (3, 4)  
Harding Debate (3, 4)  
"R" Club (2, 3, 4)  
Football (1, 2, 3, 4)  
Baseball (1, 2, 3, 4)  
Hockey (2)  
Basketball (1)



KITH BURTON  
Columbia  
Boys' Federation  
Representative (3, 4)  
Art Club (4)  
Boys' Federation



JACK CARTWRIGHT "Carl"  
Regal  
Hall Patrol  
Boys' Federation

GLEN BURKHARDT "Buck"  
Longfellow  
President of "R" Club (4)  
President of Sports  
Department, R. F. (4)  
President, Home Room (1, 2)  
Vice-President, Home Room  
(3)  
Student Council  
Representative (1, 2)  
Boys' Federation  
Representative (1, 2)  
Junior Dramatic Club (1, 2)  
"R" Club (3, 4)  
Football (1, 2, 3, 4)  
Track (1, 3, 4)  
Chairman, Queen Contest (4)  
Winning Spring Sports  
Queen Manager (3)  
Fire Squad (3, 4)  
Cub Staff (4)  
Hall Patrol  
City Champion Pole  
Vault (38)  
All-City Football (39)  
Honorary Captain, Football  
Team (39)  
Rogers Night Under the  
Stars (4)  
Sergeant-at-Arms, Math  
Class (1, 2)



JUNE RURY CASTLE  
Hamilton  
Student Council (1, 4)  
Chairman, Membership  
Committee  
Dance Committee  
President, Home Room (3)  
Basketball (1, 2)  
Tennis (1, 2)  
Volleyball (1, 2, 3)  
Baseball (1, 2)  
Golf (4)  
Skating (2, 3)  
"Harmony Hall"  
Spring Festivals  
"Buccaneers"  
Glee Club  
"Hollywood Extra"

EDNA CAMPBELL "Slim"  
Libby Junior High  
Girls' League



ARNOLD CHRISTENSEN "Sonny"  
Arlington  
Rogers Service Club  
Business Manager, Band (3)  
Freshman Baseball  
Senior Band, (2, 3, 4)  
HELEN CHRISTENSEN "Tarzan"  
Whitefish, Montana  
Vice-President, Home Room  
(3)  
Girls' League

JOHNNIE CAMPBELL "Johnnie"  
Regal  
Vice-President, Math Club  
(4)  
Vice-President, Home Room  
(1, 3)  
President, Home Room (2)  
Secretary, Home Room (4)  
Math Club (4)  
Art Club (4)  
Track (2)  
Basketball (1)  
Hall Patrol (3, 4)



RUTH CHRISTIANSON  
Regal  
Student Council  
Representative (2)  
Home Room Representative  
(1)  
G. A. C. (3, 4)  
Volleyball (1, 2, 3)  
Basketball (1, 2, 3)  
Baseball (1, 2, 3)  
Chairman, Public Utility  
Spring Festival (3)  
Treasurer, Girls' League (4)  
"Abie's Irish Rose"  
Spring Sports' Queen  
Contest (2)  
Spring Sports' Queen  
Committee (4)  
Dance Committee  
"Harmony Hall"  
"Buccaneers"

IRENE CARLISLE "Irene"  
Hamilton  
Art Club (4)  
Girls' League



MAXINE CLARKE "Max"  
Regal  
Salutatorian  
National Honor Society  
Senior Honor Roll  
President Footlights Club (4)  
Vice-President G. A. C. (3)  
Secretary, G. A. C. (4)  
Girls' League Secretary (4)  
Secretary, French Club (4)  
President, Home Room (2)  
Big Sister (3, 4)  
Pierette (2, 3)  
Song Leader (3)  
Junior Dramatic Club (1, 2)  
Student Council (4)  
Spring Sports Princess (3)  
"Harmony Hall"  
"The Buccaneers"  
"Abie's Irish Rose"  
Main Office (3)  
Badminton (3)  
Volleyball (1, 2, 3, 4)  
Tumbling (1, 2, 3, 4)  
Swimming (3)  
Baseball (1, 2, 3, 4)

DORIS CARNEY "Carney"  
Regal  
Senior Honor Roll  
President, Home Room (2)  
Home Room Representative  
(4)  
Publicity Manager, G. A. C.  
Secretary, Junior Statesmen  
German Club (2, 3)  
G. A. C. (34)  
Junior Statesmen Club (4)  
Cosmic Club (4)  
Skating Manager (4)  
Volleyball (1, 2, 3, 4)  
Basketball (1, 2, 3, 4)  
Baseball (1, 2, 3, 4)  
Tumbling (1)  
Badminton (2)  
Swimming (2, 3)  
Skating (3, 4)  
Tennis (3)  
Annual Staff (4)  
Hall Patrol (3, 4)  
Record Staff (4)  
Gym Office (1)  
Big Sister  
Honor Roll

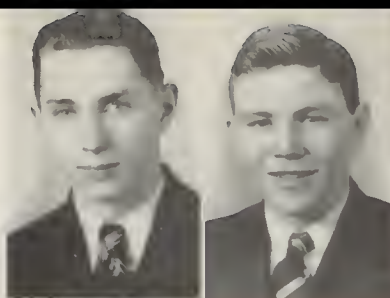


WILLIS CLEM "Willie"  
Regal  
National Honor Society  
Senior Honor Roll  
Student Council (1, 2, 3)  
President, Home Room (1)  
President, Camera Club (4)  
Vice-President, Science and  
Adventure (3)  
Math Club (4)  
Junior Statesmen Club (4)  
Camera Club (4)  
Track Manager (1)  
Football (3)  
Gym Manager (2)  
Annual Staff (4)  
Record Staff (4)  
Assistant Editor, Club Issue  
(4)  
Handbook Committee (4)  
Christmas Play Cast (2)  
Cub Staff (4)

EVELYN CARPENTER "Lynn"  
Libby Junior High  
Senior Honor Roll  
Glee Club  
Footlights (4)  
Choir (4)  
"Harmony Hall"  
"Hollywood Extra"  
"You Can't Take It With  
You"  
"Seven Keys To Baldpate"  
Record Staff (4)  
Girls' League Honor Roll (2)



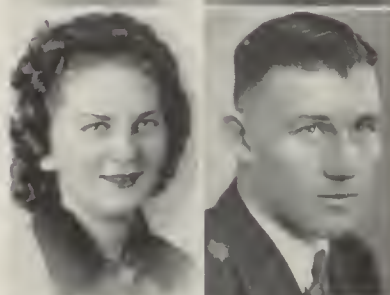
HOWARD CLINTON "Hawkeye"  
*Bemiss*  
 Hall Patrol  
 Cub Staff  
 Gym Monitor (3)  
 "R" Club (3, 4)  
 Camera Club (4)  
 Rifle Club (2)  
 Baseball Manager (3)  
 Record Staff (4)  
 Annual Staff (4)



JEAN COFFEE "Coffee"  
*Arlington*  
 Treasurer, Home Economics Club (3)  
 Home Economics club (4)  
 Secretary Junior Statesmen Club (4)  
 Chairman, Social Service Department (4)  
 Student Council (4)  
 Girls' League Representative (3)  
 Vice-President, Home Room (2)  
 Home Economics Club (3, 4)  
 Basketball (1, 3)  
 Volleyball (2)  
 Hall Patrol  
 Big Sister  
 Cub Staff  
 Record Staff (4)  
 Annual Staff (4)  
 Annual Auditor (4)  
 Editor, Girls' League Paper  
 Tutor (2)  
 Junior Statesmen Club (4)  
 Tennis (3)



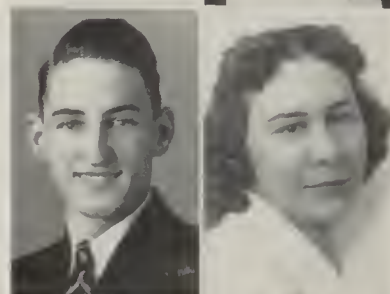
HELYNE COLLINS  
*Hamilton*  
 Student Council  
 Spring Festivals (1, 2)  
 "Buccaneers"  
 "Hollywood Extra"  
 "Harmony Hall"  
 Basketball (1, 2, 3)  
 Baseball (1, 2, 3)  
 Volleyball (1, 2, 3)  
 Tennis (1, 2)  
 Skating  
 Chorus (1, 2, 3)



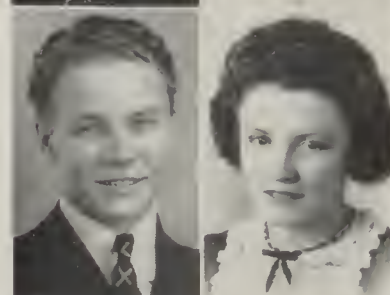
JEAN CORRUM "Corky"  
*Longfellow*  
 Baseball (2)  
 Tennis (1)  
 Basketball (1)  
 Tumbling (1)  
 Girls' League Gossip (1, 3)  
 "Off to Hollywood"  
 Badminton (3)



LAWRENCE COWLES "Larry"  
*Longfellow*  
 Art Club  
 Paint Crew (3)  
 President, Home Room  
 Treasurer, Art Club  
 Track (1, 2, 3, 4)  
 Hockey (1)  
 Band (1)



MATT COYLE "Mick"  
*Regal*  
 Hall Patrol  
 Boys' Federation



GILLAN DAHL  
*Longfellow*  
 Senior Honor Roll  
 Rogers Service Club  
 National Honor Society  
 Secretary, Student Council (2)  
 Girls' League Representative (4)  
 Treasurer, Senior Class  
 Cafe Cashier (3, 4)  
 G. A. C. (4)  
 O. G. A. (3)  
 Volleyball (1)  
 Badminton (3, 4)  
 Skating (2, 3)  
 Basketball (3, 4)  
 Baseball (2, 3)  
 Queen Contest Committee (3)  
 Big Sister (3, 4)  
 Girls' League Orchestra (4)  
 School Calendar Committee (4)



FRED DAVIES "Freddie"  
*Arlington*  
 Student Council (2, 3)  
 Boys' Federation Representative  
 Secretary, Home Room (2)  
 Sergeant-at-Arms, Home Room (1)  
 Vice-President, Home Room (1)  
 Math Club (2, 3, 4)  
 "R" Club (3, 4)  
 Tennis (2, 3, 4)  
 Freshman Basketball  
 Boys' Federation

BEATRICE DECHENNE "Bee"  
*Arlington*  
 Gym Office (2)  
 Junior Dramatic (1, 2)  
 Footlights Club  
 Choir (4)  
 Glee Club

WALT DECKER "Deck"  
*Bemiss*  
 Sergeant-at-Arms, Home Room (1, 2, 3)  
 Spanish Club (2, 3, 4)  
 "R" Club (2, 3, 4)  
 Football (1, 2, 3, 4)  
 Basketball (1, 2, 4)  
 Baseball (1)  
 Track (1, 2, 3, 4)  
 Hall Patrol (2, 3, 4)

MARY DENMAN  
*Arlington*  
 National Honor Society  
 Senior Honor Roll  
 Rogers Service Club  
 Secretary, Art Club (4)  
 Manager, Paint Crew  
 Sub-Chairman, Campfire Art Club (3, 4)  
 Choir (2, 3, 4)  
 "Hollywood Extra"  
 "Harmony Hall"  
 Paint Crew (3, 4)  
 Poster Committee, Queen Contest

MAXINE DRAKE "Max"  
*Hamilton*  
 Senior Honor Roll  
 Rogers Service Club  
 National Honor Society  
 Big Sister (4)  
 Cashier at Candy Counter (3, 4)

LETHA ESTA FARLS "Lee"  
*Arlington*  
 Girls' League  
 Senior Band (3)  
 Glee Club (2)  
 Concert Band (4)  
 Choir (3, 4)  
 "Harmony Hall"  
 "Hollywood Extra"  
 Hall Patrol

JOHN EGAN "Sonny"  
*North Central*  
 Camera Club  
 Boys' Federation  
 Museum Committee



HOWARD ENGLE "Howdy"  
Arlington  
President, Home Room (3)  
Vice-President, Home Room  
Sergeant-at-Arms, Home  
Room (2)  
Vice-President, Sport Club  
Spanish Club (3, 4)  
Math Club (3, 4)  
Track (2, 3)  
Stage Crew (2)

ERMA ENG "Bo Bo"  
Longfellow  
Girls' League (1, 2, 3, 4)  
Gym Office (1, 2, 3, 4)  
Student Council (4)  
"C" Club (1, 2, 3, 4)  
Pep Club (4)  
Math Club (3, 4)  
Badminton (2, 3, 4)  
Basketball (1, 2, 3, 4)  
Baseball (1, 2, 3)  
Volleyball (1, 2, 3)

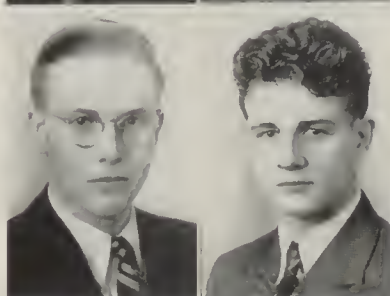
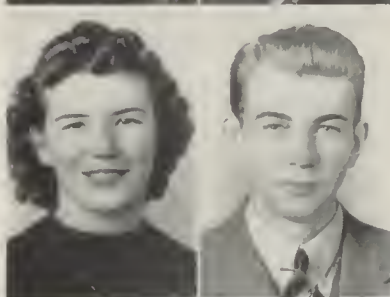
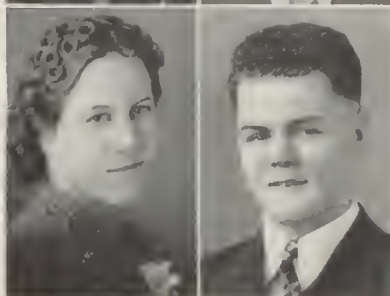
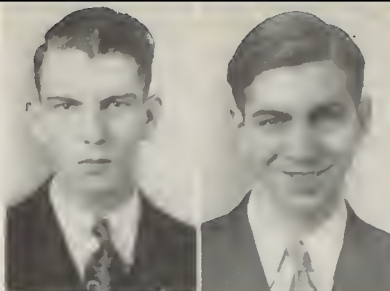
BERYL BERNICE BOWERS  
Longfellow  
Senior Honor Roll  
Art Club (4)  
German Club (3)  
Girls' League  
Invitation Committee of  
Social Etiquette  
Record Exchange Department  
Usher at Baccalaureate  
Usher at Graduation

JACK ENGBESBY "Jujitsu Jack"  
Arlington  
Study Hall Helper  
Boys' Federation

FELIX ENTENMANN  
Rogers Service Club  
Stage Crew (2, 3, 4)  
Stage Crew Manager (2)  
German Club (2)  
"Once in a Lifetime"  
Boys' Federation

CLARA FISKLAND  
Sandpoint  
Hostess  
Girls' League Representative  
Commercial Club (2)  
Badminton

ESTHER FLEMMER  
Whitman  
Girls' League



DONALD FOSKIN "Don"  
Grant  
Boys' Federation

JIM IRVIN FORSYTH "Faucet"  
Libby  
Secretary, Boys' Federation  
(4)  
Junior Statesmen Club (4)  
"R" Club (3, 4)  
Football (3, 4)  
Baseball (3, 4)  
Fire Squad (4)  
Boys' Federation  
Representative (4)

NEIL FOSTER "Steve"  
Regal  
Hall Patrol (2)  
Track (3, 4)  
Boys' Federation

SPENCER FOWLER "Spence"  
Bonners Ferry  
Business Manager, Orchestra  
Vice-President, Orchestra  
Treasurer, Pep Club  
Pep Club (4)  
Boys' Federation (2, 4)  
Band (1, 2, 3)  
Orchestra (3, 4)  
Hall Patrol (4)

WARREN FRANKLIN "Warrenie"  
Regal  
National Honor Society  
Senior Honor Roll  
Fire Squad  
Camera Club  
"R" Club  
Basketball (1, 2, 3, 4)  
Baseball (2)  
Debate (2, 3, 4)  
Orchestra (1, 2, 3)  
Record Staff (4)  
Annual Staff (4)  
Cub Staff (4)  
Copy Chief, Record (4)  
Co-Editor Snapshots, Annual  
(4)

KATHLEEN FRAZIER "Kay"  
Boniss  
Hall Patrol  
Study Hall Checker  
Girls' Basketball (2)  
Volleyball (3)  
Baseball (2)  
Tennis (1)  
Girls' League  
Public Utility Department

DEL FREEMAN "Del"  
Longfellow  
Rogers Service Club (3, 4)  
Paint Crew (3, 4)  
Hall Patrol (4)  
Sergeant-at-Arms, Art Club  
(4)  
Secretary, Home Room  
Vice-President, Junior  
Statesmen Club  
Secretary, Handicraft (4)  
Art Club (4)  
Junior Statesmen Club (4)  
Boys' Federation  
Football (1)  
Art Club Con  
Golf (4)

EUGENE FREEMAN "Gene"  
Whitman  
Rogers Service (3)  
Senior Band (2, 3, 4)  
Orchestra (4)



HAROLD GRIFFIN  
Whitman  
Boys' Federation  
Football

GORDON ROBERTS FRENCH  
"Bunny"  
Whitman  
Senior Honor Roll  
Vice-President, Home Room  
"R" Club (2, 3, 4)  
Football (1)  
Track (2)



BERN GORDON "Bunny"  
Bemiss  
Secretary, Spanish Club (3)  
Spanish Club (2, 3, 4)  
Junior Statesmen Club (4)  
Volleyball (1, 2, 3)  
Tumbling (2)  
Basketball (1, 2, 3)  
Baseball (1, 2)  
Pirettes (2, 3, 4)  
Girls' League

DORTHY FULLER "Tommi"  
Hamilton  
National Honor Society  
Senior Honor Roll  
Rogers Service (4)  
Student Council (1)  
Treasurer, Math Club (3)  
Vice-President, Math Club  
(4)  
Secretary, Home Room (3)  
Girls' League Representative  
(2)  
Reporter, Home Room  
Math Club (3, 4)  
French Club (3, 4)  
Pep Club (4)  
Volleyball (1)  
Skating (2)  
Badminton  
Editor, Annual (4)  
Club Staff (3)  
Record Staff (4)  
Gym Office (3, 4)  
Chairman Croquet  
Department (4)  
Chairman, Camp Cookery  
(1)  
Senior Nominating  
Committee (4)  
Contest Committee (4)  
Chairman, Coronation  
Committee (4)  
Girls' League Honor Roll  
(1, 2)  
First Representative to  
Journalism Conference (4)  
Chairman, Journalism  
Jamboree (4)  
Senior Prom Committee



JUNE HANKS  
Whittier  
President, Home Room (3)  
Home Room  
Representative (2)  
Art Club (4)  
Baseball (1, 2)  
Basketball (1, 2)  
Tumbling (1)  
Tennis (1)  
Volleyball (1)  
Record Staff

MARIE M. FULLERTON  
"Scrouge"  
Whitman  
Girls' League Representative  
(4)  
Spanish Club (3, 4)  
Study Hall Checker (2, 3)  
Girls' League  
Dramatics (3)  
Sports' Queen Con  
Committee  
Christmas Program (2)  
Know Your Schools (4)  
Girls' League Dramatic  
Plays  
Pirettes (2)  
Debate (2, 4)



MAXINE HARRIS "Judy"  
Libby Junior High  
Secretary, Home Room (3)  
Harding Debate (3, 4)  
Volleyball (1, 2, 3)  
Skating (1)  
Basketball (1, 2, 3)  
Baseball (1)  
Pirettes (3, 4)

ELSIE GILL  
Regal  
G. A. C. (3, 4)  
Baseball (1, 2, 3)  
Volleyball (1, 2, 3)  
Skating (2, 3)  
Tennis (2)  
Basketball (1, 2, 3, 4)  
Study Hall Checker (4)



ROLAND HEISLER "Rolly"  
Opportunity Grade School  
German Club (1, 3)  
Museum Committee  
Northwest History Class

JOE GOODMAN "Joe"  
Bemiss  
Vice-President, Home Room  
(4)  
Sergeant-at-Arms, Junior  
Statesmen (4)  
Speech Club (4)  
Boys' Federation (1, 2, 3, 4)  
Band (1)



WILBERT HUFFORD "Manag"  
Cooper  
Math Club (1)  
"R" Club (3, 4)  
Basketball Manager (3, 4)  
Football Manager (3, 4)  
Track Manager (2, 4)  
Hall Patrol (2, 3)

BUD GRAY "Bud"  
Milan  
Boys' Federation



WAYNE HUNSBERGER "Huns"  
Lundberg  
Boys' Federation

EVELYN HUTCHINSON "Hut.h"  
Arlington  
Home Economics Club  
(3, 4)

HAROLD IRRY "Shorty"  
Hamilton  
Hall Patrol  
President, Home Room  
(2, 4)  
Sergeant-at-Arms, "R" Club  
Sergeant at Arms, Boys'  
Federation  
Vice-President, Home Room  
(3)  
Football (4)  
Baseball (2)  
Golf (1)  
Manager, Student Council  
Candidates (4)  
Fire Squad (3, 4)

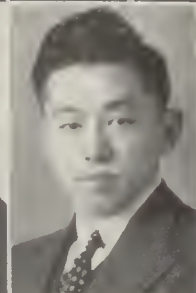
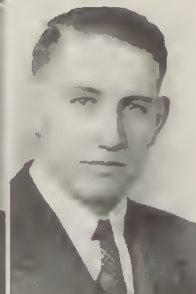
LAURENCE JACOBS "Bud"  
Lewis and Clark  
Debate Squad (4)  
Secretary-Treasurer,  
Camera Club (4)  
Junior Statesmen Club (4)  
Camera Club (4)  
Harding Debate (4)  
Stage crew (3)  
Properties, All-School  
Play

BOB JOHNSON "Bubbles"  
Moscow High School  
National Honor Society  
Senior Honor Roll  
Home Room President (3, 4)  
Secretary, Boys' Federation  
(4)  
"R" Club (3, 4)  
Math Club (3, 4)  
Football (2, 3, 4)  
Basketball (3, 4)  
Sports Editor, Rogers  
Record (4)  
Fire Squad  
Editor, Cub Edition, Rogers  
Record

LEONARD JOHNSON  
Hamilton  
Fire Squad (3, 4)  
"R" Club (4)  
Football (2, 3, 4)  
Baseball (1, 2, 3, 4)  
Vice-President, Home Room  
(1)  
Hall Patrol (2)  
Sergeant-at-Arms, Home  
Room (2)

VIOLET JOHNSON "Johns"  
Longfellow  
President, Home Room (4)  
Student Council (3)  
Vice-President, Home Room  
(2)  
"R" Club (4)  
Pep Club (4)  
Tennis (3, 4)  
Tumbling (1)  
Baseball (1, 2)  
Volleyball (1, 2)  
Basketball (1)  
Cub Staff, Rogers Record  
Orchestra (1, 2, 3)  
Record Staff (4)

BONNIE JOHNSTON "Mch"  
Longfellow  
President, Pep Club (4)  
Secretary, Senior A class (4)  
Secretary, "R" Club (4)  
"R" Club (4)  
Tennis Team (3, 4)  
Baseball (2)  
Basketball (1, 2, 4)  
Volleyball (2, 4)  
Champion Volleyball Team  
(4)  
Tumbling (1)  
Captain, Tennis Team (4)  
Orchestra (2, 3)  
Cub Staff (4)  
Record Staff (4)  
Annual Staff (4)  
Chairman, Girls' League  
Sports (4)  
Student Council (4)  
Girls' League Council (4)  
Queen Contest Committee



THELMA JOHNSTON "Zeke"  
Arlington  
Basketball (1)  
Badminton (4)  
Volleyball (2, 3, 4)  
Tumbling (4)  
Baseball (4)  
Girls' League  
Dramatics (3)  
Senior Band (2, 3, 4)  
Concert Band (4)

LESLIE JONES "Les"  
Havermale Junior High  
Sergeant-at-Arms (4)  
Baseball (3, 4)  
Basketball (3)  
Football (4)  
Boys' Federation

KEN KATAHIRA "Flip"  
Regal  
Hall Patrol  
Treasurer, Montero Club (3)  
Secretary, Montero Club  
(4)  
President, Home Room (2)  
Montero (3, 4)  
Baseball (1, 2, 3, 4)  
Football (2, 3)

PATRICIA EILEEN KELLY  
"Patsy"  
Lewis and Clark  
Vice-President, Home Room  
Girls' League  
Hall Patrol (4)

WILLIAM KERTSON "Kert"  
Gonzaga  
Boys' Federation  
Hall Patrol (4)

EVELYN KOLBET "E"  
Glenora  
German Club (3, 4)  
Girls' League

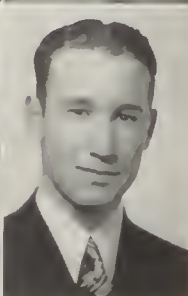
PEARL KIDD  
Arlington  
Orchestra  
Girls' League



JAMES B. KLUDY "Brenda"  
*Longfellow*  
 National Honor Society  
 (3, 4)  
 Senior Honor Roll  
 President, Footlights Club  
 (4)  
 Secretary, Boys' Federation  
 (3)  
 Chairman, Criminology (4)  
 Vice-President, Student  
 Council (4)  
 Footlights Club (2, 3, 4)  
 "R" Club (2, 3, 4)  
 O. G. A. (3, 4)  
 "C" Club (3)  
 Tennis (2, 3, 4)  
 Yell Leader (1, 2, 3, 4)  
 Hall Patrol (3)  
 Fire Squad (3)  
 Band (1, 2, 3, 4)  
 "Once in a Lifetime"  
 "You Can't Take It With  
 You"  
 "Seven Keys to Baldpate"

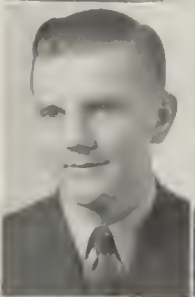


LEE ORA MANNING  
*Parrish Junior High*  
 Harding Debate Club (3, 4)  
 Drum and Bugle (3, 4)  
 Girls' League



WILLIAM ARTHUR MAYE "Art"  
*Bemiss*  
 Vice-President, Home Room  
 Math Club (4)  
 Spanish Club (2, 3, 4)  
 "R" Club (3, 4)  
 Junior Statesmen Club (4)  
 Basketball  
 Tennis  
 Sports Editor, Record (4)  
 Annual Staff (4)  
 Hall Patrol  
 Fire Squad  
 Sports Editor, Cub Edition

KATHRYN GERTRUDE KRAUT  
*"Katy"*  
*Marycliff*  
 Secretary, Home Room (3)  
 German Club (3, 4)  
 Home Economics Club (3, 4)  
 Orchestra (3, 4)  
 Pirettes (3)  
 Queen Contest (3)



JOHN W. McCONNELL  
*Logan*  
 Boys' Federation  
 Band

DONALD TOM LAUDER "Don"  
*Bemiss*  
 Vice-President, "R" Club  
 "R" Club (4)  
 Montero Club (3, 4)  
 Pep Club (1, 2)  
 Football (1, 2, 3, 4)  
 Baseball (1, 2, 3, 4)  
 Basketball (1, 2, 3, 4)  
 President, Home Room  
 (2, 4)  
 Vice-President, Home Room  
 Sports Editor of Annual (4)  
 Boys' Federation  
 Representative  
 Record Staff (4)  
 Fire Squad (4)  
 Student Council (2)



MARIAN McNEVIN "Mac"  
*St. Patrick's*  
 Gym Office Worker (2)  
 President, Home Room (2, 3)  
 Student Council (2)  
 Senior "A" Representative  
 Home Economics Club (4)  
 Tennis (3)  
 Basketball (2, 3)  
 Baseball (1, 2, 3)  
 Girls' League  
 Social Service

MARY JANE LEAHY "Janet"  
*J. J. Browne*  
 Assistant Director, "You  
 Can't Take It With You"  
 Girls' League



BETTIE MCGUFF "Bets"  
*Hamilton*  
 Girls' League  
 Chairman, First Aid  
 Student Council (2)  
 Vice-President, Home Room  
 (4)  
 Treasurer, Home Room (2)  
 Secretary, Home Room (3)  
 Tennis  
 Basketball  
 Golf  
 Skating  
 Volleyball  
 Baseball  
 Glee Club  
 "Hollywood Extra"  
 "Buccaneers"  
 "Harmony Hall"  
 Spring Festivals  
 Chorus

JACQUELINE LOWTHER "Jackie"  
*Bemiss*  
 President, Home Room (3)  
 Swimming Manager (4)  
 Student Council (1)  
 Vice-President, G. A. C.  
 G. A. C. (3, 4)  
 Harding Debate (4)  
 "R" Club (4)  
 Baseball (1, 2, 3, 4)  
 Basketball (1, 2, 3, 4)  
 Tumbling (2, 3, 4)  
 Volleyball (1, 2, 3, 4)  
 Badminton (3)  
 Tennis (2, 3, 4)  
 Golf (4)  
 Skating (3)  
 Captain, Basketball  
 Pirettes (2, 3, 4)  
 Song Leader (3, 4)  
 Gym Office



LEE H. MELCHISEDECK "Dan"  
*Libby Junior High*  
 Student Council Con  
 Committee  
 Boys' Federation

RICHARD MAINE "Dick"  
*Bemiss*  
 Gym Office (2)  
 Band (1, 2, 3)



ROGER GOODMAN  
 MELTVEDT "Rog"  
*Lewis and Clark High  
 School*  
 Rogers Patrol  
 Captain, Hall Patrol  
 President, Senior Band  
 Leader, Pep Band  
 Harding Debate Club  
 Senior Commencement  
 Committee  
 Home Room Federation  
 Representative

JIM MALONEY "Slugger"  
*Bemiss*  
 Junior Statesmen Club (4)  
 "R" Club (3, 4)  
 Baseball (3, 4)  
 Basketball (1, 2, 3, 4)  
 Sports Editor, Cub Edition  
 Fire Squad  
 Annual Staff (4)  
 Record Staff (4)  
 Sergeant-at-Arms (2)



WALTER MOBLEY "Walt"  
*Cle Elum Hi*  
 Senior Honor Roll  
 Rogers Service Club (3, 4)  
 National Honor Society (3, 4)  
 Sergeant-at-Arms, Montero  
 Club (3)  
 Footlights Club (3, 4)  
 Senior Band (2, 3, 4)  
 "Abie's Irish Rose"  
 "Once in a Lifetime"  
 "Tovarich"  
 "You Can't Take It With  
 You"  
 "Seven Keys to Baldpate"  
 Advertising Manager, "Once  
 In a Lifetime"  
 Assistant Director, "Seven  
 Keys To Baldpate"  
 Queen Manager ('39)  
 General Chairman, "Night  
 Under The Stars"  
 Record Staff (4)  
 President, National Honor  
 Society  
 "Know Your Schools"  
 Reporter



LARK ROSALIE MYHRE "Tuffy"  
*Arlington*  
 Vice-President, Home Room  
 Girls' League Representative,  
 Home Room  
 Student Council  
 Representative, Home Room  
 Spanish Club  
 "Hollywood Extra"  
 "Harmony Hall"



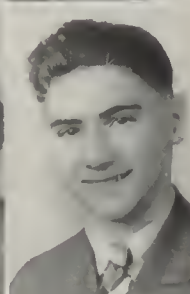
KEITH NEIGHBOURS "Keith"  
*Bemiss*  
 Gym Office  
 Sergeant-at-Arms, Home  
 Room  
 "C" Club (2)  
 Camera Club (4)  
 Track Manager (2, 3)  
 Play Hour Committee  
 Senior Prom Committee  
 Hall Patrol

DELSIE MILLER "Del"  
*Hamilton*  
 Secretary, Home Room  
 Tumbling (1, 2, 3)  
 Baseball (1, 2, 3, 4)  
 Basketball (3, 4)  
 Volleyball (1, 2, 3, 4)



MADELINE MURPHY "Irish"  
*St. Patrick's*  
 National Honor Society  
 Student Council  
 Secretary, Junior Dramatic  
 Club (1)  
 Vice-President, Junior  
 Dramatic Club (2)  
 Vice-President, Footlights  
 Club (4)  
 Secretary, Home Room (2)  
 Vice-President, Home Room  
 Junior Dramatic Club (1, 2)  
 Footlights Club (3, 4)  
 Tumbling (1)  
 Volleyball (1, 2, 3)  
 Basketball (1, 2, 3, 4)  
 Baseball (1, 2, 3, 4)  
 Girls' League Honor Roll  
 Pirettes (2, 3, 4)  
 Drum Major (2, 3, 4)  
 Columbia Cavalcade Speaker  
 "Hollywood Extra"  
 "You Can't Take It With  
 You"  
 Senior Prom Committee  
 Queen Contest (2)  
 Chairman, Dancing  
 Chairman, Inter-School  
 Relations

BETTY MOCHEL "Shorty"  
*North Central*  
 National Honor Society  
 Senior Honor Roll  
 Junior Statesmen Club (4)  
 Drum and Bugle (3, 4)  
 Girls' League  
 Big Sister (4)



ELLEN MORSE "Spicy"  
*Bemiss*  
 President, Home Room (3)  
 G. A. C. (4)  
 Basketball (1, 2, 3, 4)  
 Volleyball (2, 3, 4)  
 Tennis (3, 4)  
 Baseball (1, 2, 3, 4)  
 Skating (2)

CLIFF MUNKERS "Monk"  
*Libby Junior High*  
 President, American  
 Government Class  
 President, Home Room  
 President, Northwest History  
 Class  
 Track  
 Hall Patrol



ROBERT NELSON  
*Emmett*  
 Boys' Federation

ART MURRAY "Art"  
*Klamath Falls*  
 Junior Statesmen Club (4)  
 Boys' Federation



ROLLAND NELSON  
*Emmett*  
 Boys' Federation

DOROTHY PEDERSON "Dort"  
*Jefferson*  
 Secretary, Junior Dramatic  
 Club (2)  
 Sergeant-at-Arms, Home Room  
 (3)  
 Secretary, Home Room (2)  
 Secretary, Northwest History  
 (4)  
 Junior Dramatic Club (1, 2)  
 Footlights Club (3, 4)  
 Tumbling  
 Swimming  
 Girls' League (1, 2, 3, 4)  
 Band (2, 3, 4)  
 "Hollywood Extra"  
 "Night Under the Stars"  
 (2, 3, 4)  
 Spring Festival  
 Honor Roll  
 Girls' League Honor Roll



ANNIE NEWMAN  
*Bemiss*  
 Vice-President, Home Room  
 German (3, 4)  
 Hall Patrol  
 Girls' League

CONSTANCE NESBITT "Connie"  
*Logan*  
 Girls' League Representative  
 (4)  
 Baseball (1)  
 Volleyball (1)  
 Glee Club (1, 3)  
 Handy Andy (4)  
 Operetta (1, 3)  
 Girls' League Chorus (2, 3)

ALICE NEWTON  
*Letour and Clark High School*  
Secretary, Home Room  
Girls' League

ANNA MAE OLSON "Annie"  
*Logan*  
Orchestra Librarian  
Basketball (1)  
Record Staff (4)  
Girls League Representative (4)  
Hall Patrol (4)  
Study Hall Checker (3)  
Orchestra (2, 3, 4)  
Choir (1, 2, 3, 4)  
Operetta (1, 2, 3)

DORIS OLSON "Dorry"  
*Arlington*  
Senior Honor Roll  
Secretary, Spanish Club (2)  
President, Spanish Club (3)  
Spanish Club (2, 3, 4)  
Pirettes (4)

LEE OVERLAND  
*Forks, Montana*  
Stage Crew (2, 3, 4)  
Stage Crew Manager (4)  
Art Club (4)  
"Once in a Lifetime"

WILMA PACKER "Willic"  
*Mead High School*  
Basketball (1, 2, 3)  
Tennis (1, 2)  
Softball (1, 2)  
Archery (1, 2)

LAURA PERRY "Perry"  
*Arlington*  
Baseball (1, 2, 3, 4)  
Basketball (1, 2, 3, 4)  
Volleyball (1, 2, 4)  
Captain, Baseball (3)  
Captain, Basketball (4)  
Drum and Bugle  
Girls' League  
Club Staff

VINCENT LEE PICKENS "Easy"  
*Whitman*  
National Honor Society  
Senior Honor Roll  
Student Council (1)  
President, Home Room (1)  
Vice-President, Footlights Club (3)  
Vice-President, Montero (4)  
Treasurer, O. G. A. (4)  
Secretary, Boys' Federation (4)  
President, Senior Class  
Footlights Club (3, 4)  
Montero Club (2, 3, 4)  
"R" Club (3, 4)  
O. G. A. (3, 4)  
Pep Club (2)  
Basketball (1)  
Baseball (1)  
Track (2)  
Tennis (3, 4)  
Yell Leader (1, 2, 3, 4)  
"Tavern"  
"Once in a Lifetime"  
"You Can't Take It With You"  
"Harmony Hall"  
"Hollywood Extra"  
Choir (2, 3)  
Record Staff (3)  
Hall Patrol (1, 3)  
Dance Committee (3)  
Handbook Committee (4)  
Lieutenant, Hall Patrol  
Sergeant-at-Arms, Footlights Club (4)

EDNA POOLE "Ed"  
*Newport*  
Girls' League Representative (3)  
Home Room President (4)  
Girls' League Dramatics

HELEN PUFFER "Putt Putt"  
*Whitman*  
Student Council (4)  
Secretary, Home Room (3)  
G. A. C. (4)  
Home Economics Club (4)  
Basketball (1, 2, 3, 4)  
Captain, Basketball (3)  
Volleyball (1, 2, 3, 4)  
Tumbling (1, 2, 3)  
Baseball (1, 3, 4)  
Tennis Manager (2)

DARYL NELSON "Steele"  
*Whitman*  
Cosmic Club (3, 4)  
Boys' Federation

LUCILLE RAABERG "Cille"  
*Bonuss*  
National Honor Society (4)  
President, Home Room  
Chairman, Girls' League  
Chorus (4)  
Secretary, German Club (3)  
Secretary, Cosmic Club (3, 4)  
Junior Dramatic Club (1, 2)  
Cosmic Club (3, 4)  
German Club (3, 4)  
Volleyball  
Choir  
Big Sister  
Record Staff  
Queen Contest  
Hall Patrol  
Glee Club  
Nurse's Office

DELPHIA REAMER "Del"  
*Arlington*  
Girls' League Representative  
Treasurer, Home Room  
Sergeant-at-Arms, Home Room  
Volleyball (1, 4)  
Skating  
Basketball (1, 2, 3)  
Baseball (1, 3)  
Swimming  
Tumbling  
Drum and Bugle

MAC REYNOLDS  
*Libby Junior High*  
Boys' Federation

ROSIE RIZZUTO "Rozana"  
*St. Patrick's*  
Girls' League Representative (1)  
Vice-President, Home Room (4)  
Four Star (1, 2)  
Tennis (2, 3, 4)  
Basketball (2, 3, 4)  
Baseball (1, 2, 3)  
Nurse's Office (3)

RAY ROESTEL "Sparky"  
*Whitman*  
 National Honor Society  
 Senior Honor Roll  
 Hall Patrol  
 Vice-President, Pep Club  
 (4)  
 Lieutenant, Hall Patrol (4)  
 Boys' Federation  
 Representative  
 Sergeant-at-Arms, Home  
 Room (3)  
 Vice-Chairman, Boys'  
 Federation (4)  
 Math Club (4)  
 Junior Statesmen Club (4)  
 Pep Club (4)  
 Football (3, 4)  
 Track (1)  
 Basketball (1)  
 Rogers Patrol (2, 3)

EARL RICHARDSON  
*Longfellow*  
 Boys' Federation

VIOLET RICHARDSON "Vi"  
*Longfellow*  
 Harding Debate (4)  
 Baseball (2)  
 Basketball (3, 4)  
 Tumbling (3)  
 Volleyball (3)  
 Tennis (3, 4)  
 Orchestra (2)  
 Pirettes (4)  
 Drum and Bugle Corps (3)  
 Big Sister (4)

ELDON RUTHERFORD "Eldy"  
*Hamilton*  
 Boys' Federation  
 Rogers' Patrol

JOHN SAMPSON  
*Bemis*  
 Secretary, Band  
 Vice-President, Band (4)  
 Gun Club (1)  
 Senior Band (2, 3, 4)  
 Choir (4)  
 Boys' Federation  
 Hall Patrol (1, 2, 3, 4)

ALMA SCHIEWE "Windy"  
*Longfellow*  
 Senior Honor Roll  
 Big Sister (3, 4)  
 Secretary, Home Room (2, 4)  
 Gym Office (4)  
 Hall Patrol (3, 4)  
 Spanish Club (4)  
 French Club (3, 4)  
 Pep Club (4)  
 Badminton (4)

DON A. SHULKIN "Bus"  
*Regal*  
 Vice-President, Montero Club  
 (3)  
 President, Montero Club (4)  
 Vice-President, Home Room  
 (3)  
 Boys' Federation  
 Representative (3)  
 Montero Club (2, 3, 4)  
 "R" Club (3, 4)  
 "C" Club (2, 3, 4)  
 Basketball (1, 2)  
 Football (1, 2, 3)  
 Baseball (1, 2, 3, 4)  
 Hall Patrol (2, 3, 4)

JOSEPHINE SICILIA "Jo"  
*Columbia*  
 Rogers Service Club  
 President, Home Room (2)  
 Vice-President, Home  
 Room (2)  
 Secretary, Home Room (3)  
 Student Council  
 Representative (3)  
 Basketball (1, 2, 3, 4)  
 Baseball (1, 2, 3, 4)  
 Volleyball (1, 2, 3, 4)  
 Pirettes (3, 4)

ROBERT SIEPLER "Shep"  
*Lewis and Clark*  
 Camera Club  
 Boys' Federation

KENT A. SIMONSON "Simcy"  
*Hamilton*  
 Fire Squad  
 Sergeant-at-Arms, Harding  
 Debate Club  
 Harding Debate Club  
 Sergeant-at-Arms, Home  
 Room (2)  
 Speech (3)  
 Camera (3)  
 Football (1)  
 Track (1)  
 Boys' Federation

BETTY SIMS "Bulldog"  
*Longfellow*  
 Student Council  
 Hall Patrol (4)  
 Main Office Worker (4)  
 Secretary, Home Room (4)  
 President, Home Economics  
 (4)  
 Hall Patrol Captain (4)  
 Volleyball (2, 3)  
 Baseball (2, 3)  
 Swimming (1)  
 Skating (2)  
 Girls' League Paper

FLORENCE CAFERRO  
*Holy Names*  
 Girls' League

PHYLLIS STOFFER  
*Longfellow*  
 Secretary, Home Room (2)  
 Junior Dramatic Club (1, 2)  
 Footlights Club (3, 4)  
 Basketball (1, 2)  
 Baseball (1, 2)  
 Volleyball (1)  
 Girls' League (1, 2, 3, 4)  
 Secretary, Handicraft  
 Department  
 "Once in a Lifetime"  
 Secretary, U. S. Government  
 Class  
 Spring Festival (3)  
 Sergeant-at-Arms, Northwest  
 History Class (4)

CATHERINE STRASSER "Katie"  
*St. Xavier*  
 National Honor Society  
 Senior Honor Roll  
 Home Economics President  
 (3)  
 Vice-President, Home  
 Room (1)  
 Secretary, Orchestra (4)  
 Home Economics Club (3, 4)  
 Girls' League  
 Orchestra  
 Big Sister (3)  
 Chairman, Social Life  
 Department (4)  
 Hall Patrol



MARY LOUISE STRYKER  
*"Mary Lou"*  
*University High*  
 Rogers Service Club  
 Treasurer, Home Room (2)  
 Chairman, Dancing  
 Committee (3)  
 Girls' League Representative  
 (4)  
 Social Service Club (4)  
 Miss Finnegan's Office (4)  
 "Hollywood Extra" (3)  
 Usherette, Graduating  
 Exercises (4)  
 Girls' League (2, 3, 4)



ALAN TAYLOR  
*"Tay"*  
*Whitman*  
 Senior Honor Roll  
 Secretary, Home Room (2)  
 Vice-President, Home Room  
 (2)  
 German Club (3, 4)  
 Math Club (4)  
 Pep Club (4)  
 Football (3)  
 Track (2, 3)

DOROTHY STUTSMAN  
*"Dot"*  
*Libby Junior High*  
 Honor Roll (3)  
 Girls' League Representative  
 (3)  
 President, Home Room (4)  
 Hall Patrol (4)  
 Girls' League



WINSTON TAYLOR  
*"Bud"*  
*Longfellow*  
 Rogers Service Club  
 President, Home Room (1)  
 Sergeant-at-Arms, Home  
 Room (4)  
 Fire Squad (3, 4)  
 Debate (2, 3, 4)  
 Fire Chief (4)  
 Queen Manager (4)  
 Vice-President, Home Room  
 "R" Club (4)  
 Harding Debate (2, 3, 4)  
 Camera Club (4)  
 Track (1, 2, 3, 4)  
 Football (1, 2, 3, 4)  
 Baseball (1)  
 Basketball (1, 2)  
 Record Staff (4)  
 Band (1)  
 Annual Staff (4)  
 Cub Staff (4)

FRANCES SULLIVAN  
*St. Xavier*  
 Girls' League



MARGARET TERACENO  
*"Margie"*  
*Arlington*  
 Treasurer, Home Room (3)  
 Secretary, Home Room (4)  
 Harding Debate (4)  
 Girls' Sports  
 Girls' League Dancing  
 Department  
 Cub Staff

IONEL SUTLIFF  
*Eugene, Oregon*  
 Girls' League



STANLEY TESDAHL  
*"Stan"*  
*Bemiss*  
 Footlights (4)  
 "The Tavern"  
 "Once in a Lifetime" (3)  
 "Tovarich" (3)  
 "You Can't Take It With  
 You" (4)  
 "Seven Keys to Baldpate"  
 (4)  
 Hall Patrol (1)  
 Debate (3, 4)

ADELE SUTTON  
*"Red"*  
*Adul High School*  
 Senior Honor Roll  
 Harding Debate Club (3, 4)  
 French Club (3, 4)  
 Tumbling (3)  
 Tennis (3)  
 Girls' Glee Club (3)  
 Choir (3, 4)  
 Drum and Bugle Corps  
 (3, 4)  
 Big Sister (4)



NORMAN TEWS  
*"Norm"*  
*Whitman*  
 Math Club (3, 4)  
 Camera Club (4)  
 Committee Chairman, Student  
 Council

ROY SWORD  
*Mead*  
 Boys' Federation



HILTOR THORNES  
*"Hunk"*  
*Longfellow*  
 President, Home Room (2)  
 Secretary, Home Economics  
 Club (3)  
 President, Home Economics  
 Club (4)  
 Home Economics Club  
 (2, 3, 4)  
 Swimming (3)  
 Volleyball (1, 2)  
 Skating (1, 2, 3)  
 Social Service Chairman  
 Girls' League Representative

THEODORE KENNETH TANG  
*"Tangovitch Ken"*  
*Bemiss*  
 National Honor Society (4)  
 Senior Honor Roll  
 Winner, Algebra Contest (1)  
 Student Council (2, 4)  
 Vice-President, Home Room  
 (3)  
 Boys' Federation  
 Representative (3)  
 Secretary, Home Room (3)  
 President, Home Room  
 (2)  
 Sergeant-at-Arms, Cosmic  
 Club (4)  
 President, Cosmic Club (4)  
 Treasurer, Montero Club  
 (4)  
 Lieutenant, Hall Patrol (3)  
 Secretary, Radio Club (3)  
 Co-Chairman, Hall Patrol  
 (4)  
 Chairman, Camera Craft (4)  
 Cosmic Club (3, 4)  
 Montero Club (2, 3, 4)  
 Rifle Club (1)  
 Radio Club (1, 2, 3)  
 Camera Club (4)  
 Math Club (4)  
 Hockey (2)  
 Basketball (1)  
 Senior Band (1, 2, 3, 4)  
 Record Staff (4)



BERNADINE THOMAS  
*"Bernie"*  
*Hamilton*  
 Senior Honor Roll  
 Student, Council (3)  
 Treasurer, Home Economics  
 President, Home Room (3)  
 Secretary, Home Room (2)  
 Treasurer, Home Room (4)  
 Home Economics Club  
 O. G. A. Club (4)  
 Baseball (1, 2, 3)  
 Basketball (1, 2, 3)  
 Tumbling (1)  
 Skating (2, 3)  
 Cub Staff (3)  
 Record Staff (4)  
 Assignment Editor, Record  
 Big Sister (3)  
 Girls' League Honor Roll  
 Annual Staff (4)  
 Assistant Editor  
 Annual (4)  
 Chairman, Record Con (4)



MARGUERITE THOMAS "Peggy"  
*Longfellow*

Tennis  
Basketball  
Volleyball  
Tumbling  
Baseball  
Drum and Bugle (2)  
Pirettes (3)  
Twirlers (4)

KATHRYN THOMSON  
*Hamilton*  
Senior Honor Roll  
Rogers Service Club  
Student Body Treasurer  
(3)  
Student Council (3)

ELSTON VANSLYKE "Van"  
*Bemis*  
Secretary, Pep Club (4)  
Secretary, Home Room (4)  
Chairman, Project Committee  
Student Council (4)  
Pep Club (4)  
Math Club (4)  
Baseball Manager (1)  
Senior Band (1, 2, 3, 4)  
Rogers Record (4)  
Feature Editor, Record (4)  
Cub Staff (3)  
Copy Editor, Treasure  
Chest (4)  
Hall Patrol (4)

JEAN THORSON "Jean"  
*Columbia*  
Rogers Service Club  
Home Room Representative  
Secretary, Home Room  
Treasurer, Home Room  
Student Council (3)  
Basketball (1, 2, 3, 4)  
Volleyball (1, 2, 3)  
Tumbling (1, 2)  
Pirettes (4)

ROBERT TRUE "Bob"  
*Regal*  
Senior Honor Roll  
Rogers Service Club  
National Honor Society  
Student Council (3, 4)  
Vice-President, Art Club (3)  
President, Home Room (3)  
Art Club (3, 4)  
Cosmic Club (3, 4)  
Basketball (1, 2)  
Track (2, 3, 4)  
Hall Patrol (3)  
Stage Crew (2, 3)  
Paint Manager, "Once in a  
Lifetime" (3)  
Art Editor, Treasure Chest  
(3, 4)  
Cub Staff (3)  
Spring Sports Committee  
(3)  
Senior Prom Committee (4)

WESLEY TUCKER "Wes"  
*Longfellow*  
Sergeant-at-Arms, Home  
Room (3)  
Manager (1)  
Boys' Federation  
Hall Patrol

ROSEMARY UPDIKE "Beezer"  
*Arlington*  
Vice-President, Home Room  
(3)  
Secretary, Home Room (2)  
Spanish Club (3, 4)  
Pep Club (3)  
Senior Band (2, 3, 4)  
Concert Band (4)

ELVERA VIA "Lankie"  
*St. Patrick's*  
President, G. A. C. (4)  
Vice-President, G. A. C.  
(4)  
Treasurer, Four Star Club  
(2)  
Four Star Club (1, 2)  
Tumbling (1)  
Tennis (2, 3, 4)  
Baseball Captain (1, 2)  
Basketball (1, 2, 3)  
Volleyball (1, 2, 3)  
Big Sister (3, 4)  
Office Worker (4)  
Student Council (3)  
Chairman, Big Sister and  
Little Sister Party  
Home Room Roll Checker  
President, Home Room (1)  
Student Council

HARRY WAGNER  
*Hamilton*  
Fire Squad (4)  
Student Council (2)  
Vice-President, Home  
Room  
President, Home Room  
Secretary, Home Room  
(1, 2)  
Vice-President, Harding  
Debate (4)  
Harding Debate Club (3, 4)  
Junior Statesmen (4)  
Hall Patrol  
Cub Staff  
Rogers Patrol

STANLEY WAGNER "Stan"  
*Longfellow*  
Vice-President, Home Room  
(3)  
Entertainment Chairman,  
Footlights Club (4)  
Con. Chairman, Footlights  
Club  
Junior Dramatic Club (1, 2)  
Footlights Club (3, 4)  
"Buccaners"  
"Harmony Hall"  
"Hollywood Extra"  
"Once in a Lifetime"  
"You Can't Take It With  
You"  
"Seven Keys to Baldpate"  
Chairman, Queen Contest (4)  
Property Manager, "You  
Can't Take It With You"

EARL WALDEON "Deeey"  
*St. Patrick's*  
National Honor Society  
Student Council  
Vice-President, Senior  
Class  
President, Home Room (3)  
(2, 4)  
"R" Club (4)  
Football (1, 3, 4)  
Baseball (1, 3)  
Basketball (1, 3)  
Track (2)  
Tennis (4)  
Senior Nominating  
Committee  
Dance Committee  
Spring Sports Queen Contest  
Committee  
Cub Staff (3)  
Hall Patrol (1, 2)

HAROLD WEITMAN "Bill"  
*Falveyford*  
Boys' Federation

VIRGINIA WHITE "Toots"  
*Leicester State Normal*  
Rogers Service Club  
Librarian (4)  
Girls League Representative  
(3, 4)

LEROY WHIPPLE "Whip"  
*Bemis*  
Rogers Service Club  
Student Council  
Secretary, Home Room (3)  
Chairman, Pledge  
Committee  
Secretary, Footlight Club  
(4)  
Hall Patrol  
Band (1, 2, 3, 4)

ELIZABETH JANE WYNKOOP  
"Betty"

*Libby Junior High*  
Rogers Service Club  
Student Council  
President, Home Room (2)  
Treasurer, Home Room (3)  
Vice-President, Home  
Room (4)  
Chairman, Girls' League  
Chorus (2, 3)  
Home Economics Club  
(2, 3)  
Cosmic Club (3, 4)  
Girls' League (2, 3)  
Hall Patrol (4)  
"Harmony Hall"  
"Hollywood Extra"  
Choir (2, 3, 4)  
Dance Committee (4)  
Communication Committee  
Queen Contest (4)

CLINTON WHITE  
"Whitman"  
Boys' Federation



JAMES YOUNG "Jim"  
*Regal*  
Senior Honor Roll  
Sergeant-at-Arms, Home Room  
(3)  
Camera Club (4)  
Junior Statesmen Club (4)  
Football (2)  
Track (1, 2)  
Hall Patrol (2)  
Assistant Sports Editor,  
Record (4)  
Rogers Patrol (1, 2, 3)  
Photography Editor, Annual  
(4)  
Cub Staff (3)  
Record Staff (4)  
Annual Staff (4)  
Senior Prom Committee (4)  
President, Outdoor Life, Boys'  
Federation (4)

DUDLEY YENNEY "Dud"  
*Longfellow*  
Hall Patrol (2, 3)  
Sergeant-at-Arms, Home Room  
(1)  
German Club (3)  
Pen Club (4)  
Junior Statesmen Club (4)  
Boys' Federation, Concert  
Band

MARGARET YARROLL "Marg"  
*Columbia*  
Rogers Service Club  
Harding Debate (4)  
Volleyball  
Basketball  
Baseball  
Gym Office (2)  
Pirettes (3)  
Vice-President, Home Room  
(4)  
Home Room Attendance  
Checker  
Library Worker (2, 3)

## June Class History

● From the large freshman class which entered Rogers September, 1936, 187 students graduated June 7.

Senior A class officers are Vincent Pickens, president; Earl Waldron, vice president; Bonnie Johnston, secretary; Gullan Dahl, treasurer.

Outstanding in the field of journalism is Julienne Austring, editor of the Rogers Record and Dorothy Fuller, editor of the Treasure Chest. Scholastic honors go to Jeannette Ellis, valedictorian, and Maxine Clarke, salutatorian.

## June Commencement

● Student speakers made up the commencement program for the 184 graduating seniors Friday, June 7.

Vince Pickens, Maxine Clarke, Earl Waldron, and Jeannette Ellis participated in the program. Paul MacGown, English instructor, was the adviser.

Diplomas were presented by Dr. Frederick Fischer of the school board, assisted by Principal J. D. Meyer.



1. Big Business  
2. Hoo hoo!  
3. Yarroll  
4. Kerr

5. Irene  
6. Quartet  
7. The Winner  
8. Hair Stylist

9. Short Stuff  
10. Pals  
11. Smarties  
12. Sleepy

13. Strolling  
14. Jerry  
15. Beverly  
16. Vamps

17. Smith and Davis  
18. Bartholomew  
19. Murphy





1. Dog House Gang  
 2. Floating in Air  
 3. The Thinker  
 4. Gorging  
 5. The Dancers

6. Clark Gable  
 7. Office Worker  
 8. Romeo and Juliet  
 9. Tang

10. News Hawks  
 11. Meranda  
 12. Dracula  
 13. Marjorie

14. Half Back  
 15. Pensive  
 16. Margie  
 17. Coffee

18. Tennis Star  
 19. Strasser  
 20. Annual Staff  
 21. Boys Will Be—





*Senior B Class*



*Junior A Class*



*Junior B Class*





*Sophomore A Class*





*Sophomore B Class*



*Freshman A Class*





*Freshman B Class*





1. Bill Sacks  
2. Mr. Smith  
3. Pat Stevens

4. Sweat Shop  
5. Joe Goodman  
6. Mr. Hughes

7. That Man Again  
8. Cluts  
9. Ho Hum!

10. Earl Bernstein  
11. Soak E'm  
12. Bottoms Up



. . . *Activities*







- |                 |                  |                         |                    |                         |
|-----------------|------------------|-------------------------|--------------------|-------------------------|
| 1. Winston      | 5. Gimmy and Eli | 9. Goin out on a party? | 13. Such Goin's On | 17. Who's in the second |
| 2. Sell 'em Ken | 6. We Three      | 10. Mr. Hubbell         | 14. Ain't I Cute?  | square                  |
| 3. Vi           | 7. Coach         | 11. Hum!                | 15. Loafers        | 18. Bluff               |
| 4. Paint Job    | 8. Ruffians      | 12. Camera Fiends       | 16. Max            | 19. Spare Me Simon      |



**First Row:** Weir, Eastburg, Tang, True, Burkhardt, Williams, Bays, Speck, and Bryly.  
**Second Row:** Bruno, Jackson, Anderson, Appa, Bysegger, Goble, Vincent, Payne, and McLaughlin.  
**Third Row:** Ladd, Sims, Arnold, Johnston, Gale, Ellis, Raaberg, Williams, Bard, and Woirhaye.  
**Fourth Row:** Finn, Smith, Caferro, Thompson, Kendrick, J. Johnson, Coffee, Powell, Okerstrom, B. Johnson, Taylor.

## Student Council

### FIRST SEMESTER

Sandra Appa

Carl Moller

Betty Mae Johnson

Don Diediker

*President*

*Vice-President*

*Treasurer*

*Secretary*

### MEMBERS

Sandra Appa

George Young

Eleanor Smith

George Ladd

Dave Cooper

Kenny Tang

Jean Coffee

Irina Lee Harrah

Earlene Oman

Francis Woirhaye

Beverly Bard

Joe Speck

Joe Gnagler

Tony Penna

Clair Finn

Carl Moller

Don Williams

Margaret Taylor

Dale Eastburg

Bonnie Johnston

Marjorie Kendrick

Helen Gale

Esther Caferro

Hermia Vincent

Jean Arnold

John Westland

Glen Haskins

Charles Schnler

Grant Brown

Betty Mae Johnson

Shirley Thompson

Bob True

Jeannette Johnson

Effie Goble

Bettie Sims

Phyllis Anderson

Irene Okerstrom

Peggy Powell

Charlotte Paine

John Smith

Harvey Smith

Chester Hansen

Bob Olson

Don Diediker

June Love

Jeannette Ellis

Al Olmstead

Isla Bysegger

Lucille Raaburg

Virginia Williams

Ethel Burgemaster

Valois Burton

Kathleen McLaughlin

Alfred Bays

Bob Linden

Roy Emch

Darrell Homad

● A new system of electing student council officers was undertaken by the Student Council. The election was to resemble as closely as possible that of the National Government. Nominating conventions were held, and candidates for officers were presented at a convocation. Electors compiled the votes at the electoral college. Miss Rose Finnegan, Principal J. D. Meyer, and M. H. Hubbell are the advisers.



First Row: Gululis, Z. Anderson, Westland, Kludt, B. Johnson, McGee. Second Row: Briley, Olson, Murphy, Castle, Crain, Appa, Sicilia, Metice. Third Row: Gendreau, Williams, Campbell, Collins, Puffer, Everett, Smith, Turner. Fourth Row: J. D. Meyer, Nicolette, Hawke, Gale, C. Smith, Concie, Davis. Fifth Row: Steane, Tews, Nelson, Roberts, Sampson, J. Smith, Enos, Bays, Whipple, Tang, Toole.

## Student Council

### SECOND SEMESTER

John Westland  
Jim Kludt  
Margaret Blodgett

*President*  
*Vice-President*  
*Secretary*

### MEMBERS

Johnny Westland  
Zelda Anderson  
Wilbert Clifford  
Helen Puffer  
Ruth Campbell  
Hattie Crain  
Joe Speck  
Bob Concie  
Helen Turner  
John DeChenne  
Ernie Shane  
Eileen Williams  
Marie Nicolette  
Leroy Whipple  
Madeline Murphy

Jimmy Kludt  
Jack Sandberg  
June Castle  
Earl Waldron  
Ella McGee  
Fay Hughes  
Walt Bomersheim  
Dick Nelson  
Anna Jo Toole  
Chester Hansen  
Verne Enos  
Dick Sadd  
Evelyn Hawke  
Jeannette Ellis  
Elston Van Slyke

Margaret Blodgett  
Julienne Austring  
Erma Eng  
Al Bays  
Ken Benham  
Phyllis Smith  
Connie Smith  
Marcella Gendreaux  
John Roberts  
Madeline Davis  
Dorothy Clarke  
Darrel Homad  
Don Sampson  
Larry Jacobs  
Kenny Tang

Betty Mac Johnson  
Helen Gale  
Jo Sicilia  
John D. Smith  
Phyllis Austring  
Bob Briley  
Agnes Appa  
Grace McGee  
Robert Nelson  
Dolly Olson  
Marie Gululis  
James Ellis  
Roy Hansen  
Jerry Everett  
Norm Tews

● Important projects for this semester include matinee dances, spring sports queen contest, and play hour. Principal J. D. Meyer, Miss Rose Finnegan, and M. H. Hubbell are advisers.





First Row: Clarke, Gaines, Johnson, Kendrick, Bysegger, Goble, Raaberg, and Murphy. Second Row: Dempsey, Gale, Anderson, Everett, Jawort, Wilson, Ellis, Eller, and Hansen. Third Row: Jinnett (Adviser), Waller, Dahl, Drabe. Fourth Row: Manning, Clifford, Anderson, Waldron, Tesdahl, Pickens, and True.

## National Honor Society

### FIRST SEMESTER

Walt Mobley

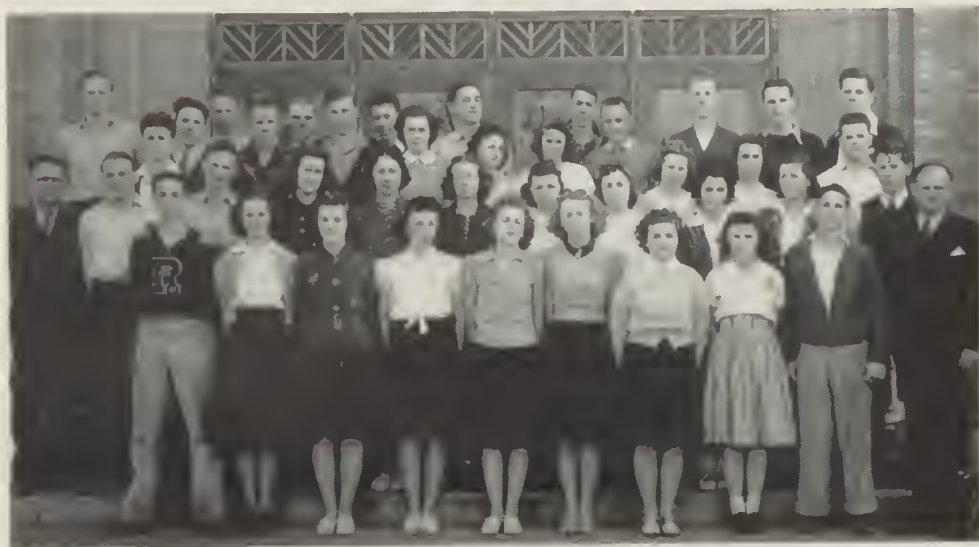
President

#### MEMBERS

Effie Goble  
Beverly Wilson  
Marjorie Kendrick  
Elaine Waller  
Rex Hansen  
Jeannette Ellis  
Maxine Clarke  
Walter Mobley  
Harold Dempsey  
Wilbert Clifford  
Stanley Tesdahl  
Madeline Murphy  
Jerry Everett  
Helen Gale

Robert Anderson  
Betty Gaines  
Eugene Manning  
Jack Eller  
Alice Jawort  
Maxine Drabe  
Gullan Dahl  
Kenneth Tang  
Bob True  
Bill Alfstad  
Lucille Raaberg  
Earl Waldron  
Zelda Lee Anderson  
Vincent Pickens

● Requirements for admittance to the National Honor Society are outstanding character, leadership, scholarship, and service. The highest honor a high school student may attain is membership in this national organization. Principal J. D. Meyer and Vice-Principal E. R. Jinnett are advisers.



First Row: Dieliker, Shaw, Blodgett, Moore, McGee, Birdsell, Diehl, Mochel, Cobb, and Meyer (Adviser). Second Row: Jinnett (Adviser), Tang, Tews, Dahl, Drabe, Denman, Raaberg, Murphy, Ellis, Fuller, and Nelson. Third Row: Franklin, French, Bays, Strasser, Hanifen, Everett, Gale, Anderson, and Forsyth. Fourth Row: Entenmann, McLeod, Erickson, Mobley, Roestel, Clem, Anderson, Kludt, Pickens, True, and Tesdahl.

## National Honor Society

### OLD MEMBERS

Maxine Drabe  
Gullan Dahl  
Kenneth Tang  
Bob True  
Bill Alfstad

Stanley Tesdahl  
Madeline Murphy  
Lucille Raaberg  
Earl Waldron  
Jerry Everett  
Zelda Lee Anderson

Helen Gale  
Jeannette Ellis  
Maxine Clarke  
Walter Mobley  
Vincent Pickens

### NEW MEMBERS

Mary Denman  
Ray Roestel  
Bette Mochel  
Willis Clem  
Norman Tews  
Dorothy Fuller  
Gordon French  
Alfred Bays  
Catherine Strasser

Warren Franklin  
Felix Entenmann  
Jim Forsyth  
Ella McGee  
Jean Hanifen  
Sylvia Moore  
Margaret Blodgett  
Victor Cobb

Walter Nelson  
Neal McLeod  
Helen Diehl  
Frank Erickson  
Julienne Austring  
Bob Johnson  
Edith Birdsell  
Carol Shaw  
Roy Hawke

● Membership in the National Honor Society is the highest honor a student may obtain in high school. Requirements for admittance into the organization are outstanding character, leadership, scholarship, and service. Principal J. D. Meyer and Vice-Principal E. R. Jinnett are advisers.



First Row: Gale, Clarke, Adams, Elmquist, Swanson, Raaberg. Second Row: Kendrick, Thompson, Bysegger, Johnson. Third Row: Keifer, Johnston, Strasser.

## Girls' League

Shirley Thompson

Isla Bysegger

Maxine Clarke

Marjorie Kendrick

*President*

*Vice-President*

*Secretary*

*Treasurer*

### DEPARTMENT CHAIRMEN

Jeanette Johnson

Helen Gale

Irene Keifer

Lucille Raaberg

Doris Hedstrom

Ruth Christianson

Catherine Strasser

Isabel Adams

Bonnie Johnston

Evelyn Elmquist

Edith Swanson

Big Sister

Dramatics

Puppetry

Music

Social Service

Public Utilities

Social Life

Dancing

Sports

Handicraft

First Aid

●The Girls League's eleven departments meet once a month and they all join for a general meeting once a month. Miss Rose Finnegan is the adviser.





First Row: Pickens, G. Young, Kludt, Sandberg, Tang, and J. Young. Second Row: Lewis, Williams, Taylor, Johnson, Westland, and Weir

## Boys' Federation

### FIRST SEMESTER

George Young  
Don Williams  
Vincent Pickens  
Jack Sandberg  
John Westland

*President*  
*Vice-President*  
*Secretary*  
*Sergeant-at-Arms*  
*Head of all Departments*

### DEPARTMENT CHAIRMEN

Don Kerr  
Glen Burkhardt  
Jim Young  
James Kludt  
Kenneth Tang  
Junior Penna  
Jim Crook

Aeronautics  
Sports  
Outdoor Life  
Criminology  
Camera Craft  
Handicraft  
Science

● The Boys' Federation is the group in the school to which every boy in the school belongs. Monroe Hubbell is the adviser.



First Row: Johnston, Christianson, Anderson, Gale, Kiefer, Shaw, and Anthony. Second Row: Coffee, Weller, Pierce, McGhee, Neff, Hanson, Beck, and Miss Finnegan (Adviser).

## Girls' League

----

### SECOND SEMESTER

Zelda Lee Anderson  
Helen Gale  
Irene Kiefer  
Ruth Christianson

President  
Vice-President  
Secretary  
Treasurer

### DEPARTMENT CHAIRMEN

Carol Shaw	Big Sister
Jo Weller	Dramatic
Esther McGhee	Puppetry
Betty Bryan	Music
Jean Coffee	Social Service
Betty Beck	Public Utilities
Dorothy Anthony	Social Life
June Pierce	Dancing
Bonnie Johnston	Sports
Viola Neff	Handicraft
Esthella Hanson	First Aid

●The Girls' League is organized to give every girl in the school an opportunity for some outside activity. It covers various fields of interest. Miss Rose Finnegan is adviser.



First Row: Irby, Burkhardt, Kludt, Sandberg, Broadhead, Forsyth, and Lunders. Second Row: French, McLeod, Crook, Kerr, Tang, and Young. Third Row: Hubbell (Adviser), and Tesdahl.

## Boys' Federation

### SECOND SEMESTER

Jack Sandberg  
Don Broadhead  
James Forsyth  
Harold Irby

*President*  
*Vice-President*  
*Secretary*  
*Sergeant-at-Arms*

### DEPARTMENT CHAIRMEN

Don Kerr	Aeronautics
Glen Burkhardt	Sports
Jim Young	Outdoor Life
James Kludt	Criminology
Kenneth Tang	Camera Craft
Junior Pema	Handicraft
Jim Crook	Science

### BOYS' PROBLEM SESSION

Evan Eller	Freshman
Jim Breeden	Sophomore
Bob Lunders	Junior
Victor Cobb	Senior

● The Boys' Federation is an organization to train boys to cooperate and get along with others. The different departments are organized for their personal interests. Monroe Hubbell is adviser.





**First Row:** Wynkoop, Moore, Blodgett, Varrell, Sicilia, and B. Denman. **Second Row:** Jinnett (Adviser), Shaw, Stryker, Pascuzzi, Thompson, and Bartholomew. **Third Row:** Meranda, M. Denman, Anderson, Drabe, and Meyer (Adviser). **Fourth Row:** Mobley, Klndt, Coburn (Adviser), Dahl, and Sarsfield.

## Rogers Service Club

### MEMBERS

Beverly Wilson  
Vivian Ellis  
Mary Denman  
Bessie Denman  
Doris Carlson  
Elaine Bernstein  
Grace Anderson  
Jeanette Johnson  
Kathryn Thomson  
Martha Bartholomew  
Marie McMahan  
Dorothy Crosley  
Maxine Drabe  
Gullan Dahl  
Bernice Marier  
Margaret Angel  
Betty Meranda  
Margaret Blodgett  
Jean Thorson  
Marjorie Kendrick  
Sylvia Moore

Margaret Reeder  
Vera Rodolph  
Carol Shaw  
Betty Wynkoop  
Jo Sicilia  
Shirley Thompson  
Walt Mohley  
Del Freeman  
Mark Miller  
Arnold Christenson  
Eugene Freeman  
Milyne Allan  
Charles Moore  
Ronnie Beedle  
Eugene Rahbins  
Harold Schindler  
Lee Overland  
Felix Entenmann  
Bob True  
Warner Burrill

Betty Gaines  
Margaret Yarroll  
Carl Nygaard  
Sandra Appa  
Alice Jawort  
Mary Ann Nichols  
Dorthy Fuller  
Francis Moe  
Jim Sarsfield  
Peggy Williams  
Harold Weaver  
Donna Beasley  
Dale Eastburg  
Tony Juliano  
Ed Harris  
Wilbert Clifford  
Mary Pascuzzi  
Mary Stryker  
Maxine Craig  
Virginia White  
Phyllis Anderson

● The Rogers Service club consists of students who have done outstanding work for the school. They must be recommended by the faculty.

Principal J. D. Meyers, E. R. Jinnett and A. P. Coburn are the club advisers.



First Row: Miller, Hankins, Appa, V. Bartholomew, J. Bartholomew, Walker, West, Cake, Second Row: Carlisle, Friday, Kiefer, Lundquist, Ludwig, Bowers, Denman, True, Sasai, Sandberg, Hughes (Adviser), Third Row: Clinton (Student Teacher), Burton, Pike, Overland, Campbell, Milburn, Bumpus, Cowles, Freeman.

## Art Club

----

### First Semester

Katie West  
Bob Blake  
Doris Lundquist  
Norman Bumpus  
Isabel Miller

President  
Vice-President

Secretary  
Treasurer  
Sergeant-at-Arms

### Second Semester

Jerry Ludwig  
Jack Sandberg  
Mary Denman  
Larry Cowles  
Del Freeman

### MEMBERS

Virginia Bartholomew  
Jesslyne Bartholomew  
John Pike  
Jack Sandberg  
Don Williams  
Jerry Ludwig

Louise Langbehn  
Frank Cake  
Del Freeman  
Keith Burton  
Larry Cowles

Dorothy Walker  
Beryl Bowers  
Betty Jo Ellingsen  
Marion Decker  
Frank Cake  
Lee Overland

### NEW MEMBERS

Irene Carlisle  
Kathleen Friday

Dick Milburn  
John Campbell  
Agnes Appa

Sam Sasai  
June Hankins

●The Art Club is composed of students having at least two semesters of fine arts, and the purpose of which is to further interests in art and photography. F. C. Hughes is the adviser.



First Row: Ericson, Ross, Tews, Neighbors, Tang, Clinton, and C. Williams. Second Row: Jones, N. Williams, Franklin, Taylor, Smeltzer, Sasai, and Hughes (Adviser). Third Row: Egan, Edstrom, Clem, Harris, Young, Quinton, Wentz, Jacobs, and Graham.

## Camera Club

Willis Clem

Chester Graham

Larry Jacobs

Bill Sloeum

President

Vice-President

Secretary-Treasurer

Sergeant-at-Arms

### MEMBERS

Lawrence Arvin  
Willis Clem  
Howard Clinton  
John Egan  
Don Ericson  
Warren Franklin  
Chester Graham  
Bill Harris  
Larry Jacobs

Don Kerr  
Keith Neighbors  
Bill Nixon  
Dee Quinton  
Wilmot Ross  
Sam Sasai  
Bill Sloeum  
Bob Smeltzer  
Kenny Tang

Bud Taylor  
Norman Tews  
Jack Wentz  
John Westland  
Neil Williams  
Clair Williams  
Jim Young  
Floyd Jones  
Bob Edstrom

● This group was formed to further interest and knowledge in Photography. Developing and finishing is done in the club's darkroom which is located in the back of the art room. F. C. Hughes is the club adviser.





First Row: Raaberg, Wynkoop, Doyle, Hunt, Anderson, Williams, Ellis, and C. Ogle. Second Row: N. Watts, W. Watts, Glass, Miller, Everett, Hawke, Jelinek, Davis, F. Crook. Third Row: May, Peterson, Murray, Ogle, McLeod, Williams. Fourth Row: J. Crook, Nelson, Smith, McElroy, Cummings, Nixon, K. Tang, Bays.

## Cosmic Club

### First Semester

Nellie Hunt  
Johnnie Stein  
Lucille Raaberg  
Kenneth Tang

### President

### Vice-President

### Secretary-Treasurer

### Sergeant-At-Arms

### Second Semester

Kenneth Tang  
Bob McElroy  
Lucille Raaberg  
Al Bays

### MEMBERS

Viola Anderson  
Al Bays  
Doris Carney  
Gerry Doyle  
Wanda Watts  
Betty Wynkoop  
Jeannette Ellis  
Jerry Everett  
Mary Glass  
Nada Watts

Pauline Peterson  
Phyllis Smith  
Neal McLeod  
Clair Williams  
Charles Ogle  
Fred Crook  
Jim Crook  
Bob McElroy  
Shirley Thompson

Johnny Finn  
Bob True  
Johnnie Stein  
Nellie Hunt  
Isabel Miller  
Ruth Crocker  
Margaret Miller  
Lucille Raaberg  
Mark Miller  
Kenneth Tang

### NEW MEMBERS

Frank Erickson  
John Jelinek  
Roy Hawke  
Bill Nixon

Marjorie Ogle  
Leroy Cummings  
Peggy Williams

Walter Nelson  
Bess Murray  
Gene Davis  
Patricia May

● The purpose of this club is to further the interest of the students in Science and activities of the nature of life—Many experiments and field trips are enjoyed throughout the semester in the Cosmic club. I. R. Minzel is the adviser.



First Row: Clarke, Armstrong, Skiffington, Murphy, Diehl, Whipple, and DeChenne. Second Row: Pederson, Weller, Gale, Ratliff, Nelson, Melcho, and Alstrom. Third Row: J. L. Purdy (Adviser), Kapel, Kludt, Brengle, Erickson, and Smith. Fourth Row: Allen, Mobley, Tesdahl, and Wagner.

## Footlights Club

### First Semester

Maxine Clarke  
Thula Trone  
Leroy Whipple

### President

### Vice-President

### Secretary-Treasurer

### Second Semester

Jim Kludt  
Madeline Murphy  
Betty Ratliff

### MEMBERS

Bill Alfstad  
Anita Armstrong  
Beatrice DeChenne  
Harland Holcomb  
Madeline Murphy  
John Dee Smith  
Leroy Whipple  
Helen Gale  
Milyne Allen

Isla Bysegger  
Helen Diehl  
Jim Kludt  
Edith Melcho  
Dorothy Pederson  
Phyllis Stoffer  
Annie Kate Brengle  
Evelyn Carpenter  
Frank Erickson  
Margaret Miller

Mary Lee Larson  
Vince Pickens  
Stanley Tesdahl  
Rex Alstrom  
Maxine Clarke  
Betty Kapel  
Walt Mobley  
Betty Ratliff  
Stanley Wagner

### NEW MEMBERS

Helen Gale  
Stanley Roseland

Jo Weller  
Mary Lee Larson  
Gordon Polk

Maynard Nelson  
Patsy Skeffington

● Besides putting on numerous cons during the year, many of the members are in the All-School Play cast. J. L. Purdy is club adviser.



First Row: Sutton, Gale, LeFevre (Adviser), Clarke, Dickey. Second Row: B. Johnson, Mead, Meyers, J. Johnson, Thompson. Third Row: Harris, Dry, Johns, McVey, Town.

## French Club

### First Semester

Shirley Thompson  
Marjorie Mead  
Clare Kiefer  
Ed Harris

### President

### Vice-President

### Secretary and Treasurer

### Sergeant-at-Arms

### Second Semester

Marjorie Mead  
Clare Kiefer  
Maxine Clarke  
Don Dry

### MEMBERS

Maxine Clarke  
Dorothy Fuller  
Phyllis Smith  
Helen Gale  
Marjorie Mead  
Adele Sutton  
Betty Jeanne Johnson  
Don Dry

Gilio Chesurin  
Harold Herbert  
Eugene Town  
Viola Anderson  
Anna Schiewe  
Marguerite Dickey  
Clare Kiefer  
Ed Harris  
Dale Linebarger

Kenny McVey  
Eleanor Smith  
Lois Hodge  
Jeanette Johnson  
Hope Johnston  
June Meyers  
Shirley Thompson  
Marvel Jean Shirley

● The purpose of this club is to promote more interest and a better understanding of French. Miss Marion G. LeFevre is adviser.





First Row: Nelson, Young, Raaberg, Harrah, and F. Crook. Second Row: Materne, J. Crook, McLeod, Bovee (Adviser), and Luders. Third Row: Burkhardt, Kelly, Stussl, and Jansen.

## German Club

### First Semester

Neal McLeod  
Jim Crook  
Lucille Raaberg  
Ima Lee Harrah

President  
Vice-President  
Secretary  
Treasurer

### Second Semester

Roy Hawke  
Ben Luding  
Ima Lee Harrah  
John Jelinek

### MEMBERS

Deretha Aigner  
Howard Burkhardt  
Fred Barline  
Louise Langbehn  
Bob Luders  
Ben Luding

Lucille Raaberg  
Fred Crook  
Neal McLeod  
John Jelinek  
Alan Taylor  
Jerry Doyle  
Bob Jansen

Louise Hallstein  
Roy Hawke  
Fay Hughes  
Ima Lee Harrah  
Jim Crook  
Walter Nelson

●The purpose of the club is to provide social activities for those students having at least two semesters of German. Mrs. Marie Bovee is the adviser.



First Row: Appa, Peterson, Ludwig, Christianson, Harrah, Via, and Clarke. Second Row: Dahl, Morse, Gill, Carney, Birdsall, Phillips, Blodgett, Glass, and Puffer. Third Row: Miss Perkins (Adviser).

## G. A. C.

### OFFICERS

Jeanette Johnson	<i>President</i>	Jackie Lowther
Elvera Via	<i>Vice-President</i>	Ima Lee Harrah
Maxine Clarke	<i>Secretary</i>	Mary Glass
Marjorie Kendrick	<i>Treasurer</i>	Elvera Via

### MEMBERS

Edith Birdsall	Mary Glass	Betty Lou Miller
Margaret Blodgett	Gullan Dahl	Ellen Morse
Doris Carney	Elsie Gill	Virginia Phillips
Ruth Christianson	Ima Lee Harrah	Elvera Via
Maxine Clarke	Jackie Lowther	Helen Puffer
	Jerry Ludwig	

### NEW MEMBERS

Agnes Appa	Hattie Crain	Pauline Peterson
	Evelyn McCafferty	

●The Girls Athletic Club is composed of the girls who are interested in sports and those who have turned out for the various sports. Miss Mabel Perkins is the adviser.



First Row: Williams, Wagner, Taylor, Simonson, Eller. Second Row: N. Watts, W. Watts, McMahan, Birge, Davis, Doyle, Westland, McBarry, Sutton, Rishton, Elmquist, Lowther. Third Row: Cook, Jackson, Appa, Petretee, Adams, Shauvin, Crook, McLeod, Jelinek, Bridewell, Loveland. Fourth Row: Yarroll, Teraceno, Harris, Pierce, Bomersheim, Nixon, F. Crook, Jacobs, Beitey, Iva Morrison (Adviser). Fifth Row: Meltvedt, Jackson.

## Harding Debate Club

John Westland  
Vivienne Cook  
Lucille Petretee  
Clair Williams

President  
Vice-President  
Secretary  
Treasurer  
Sergeant-at-Arms

Nada Watts  
Harry Wagner  
Evajean Bridewell  
Clair Williams  
Pat Shauvin

### MEMBERS

Kent Simonson  
Vivienne Cook  
Bud Taylor  
Harry Wagner  
Adele Sutton  
Maxine Harris  
June Pierce  
Evelyn McCafferty  
Evajean Bridewell  
Ennie Jackson  
Jim Crook  
Clair Williams  
Jeanne Rishton  
Phyllis Anderson  
Bob Beitey

Geraldine Doyle  
Nada Watts  
Wanda Watts  
Bill Nixon  
John Jelinek  
Marie McMahan  
Neal McLeod  
Pat Shauvin  
Fred Crook  
Margaret Yarroll  
Walter Bomersheim  
George Jackman  
Evelyn Elmquist  
Walter Nelson  
Gene Davis

Edith Birge  
Jackie Lowther  
Isabel Adams  
Arlene Mccherry  
Agnes Appa  
Betty Bryant  
Margaret Loveland  
Margaret Teraceno  
Roger Meltvedt  
LeRoy Cummings  
Kenny Hunt  
Earl Colgrove  
Violet Richardson  
Myrl Lindgren  
Joe Speck

●The Harding Debate club was organized in November, 1923, for the purpose of promoting interest in debate and encouraging a spirit of good fellowship among the students. It is called Harding Debate after the late president Harding because the debate team, at the time the club was formed, was debating the World Court question as he had outlined it.





First Row: Merchant, Stocking, Davis, Moore, Blodgett, Caughey, and McNevin. Second Row: Thornes, Miss Herrington (Adviser), Palmquist, Bridewell, Puffer, and Cuzzetto. Third Row: Strasser, Anthony, Thomas, and Sarsfield. Fourth Row: J. Coffee, Williams, H. Coffee, and Hutchinson.

## Home Economics Club

### First Semester

Hildor Thornes  
Lucille Cuzzetto  
Bettie Sims  
Bernadine Thomas  
Margaret Blodgett  
Jean Coffee

### President

### Vice-President

### Secretary

### Treasurer

### Social Secretary

### Point Chairman

### Second Semester

Bettie Sims  
Helen Coffee  
Eva Jean Bridewell  
Donna Beasley  
Phyllis Palmquist  
Helen Sarsfield

### MEMBERS

Elaine Bernstein  
Eva Jean Bridewell  
Lucille Cuzzetto  
Jackie Davis  
Marian McNevin  
Lucille Petre  
Margaret Blodgett  
Marge Caughey  
Jean Coffee  
Alice Jawort

Ruth Murphy  
Helen Puffer  
Donna Beasley  
Helen Coffee  
Dorothy Collins  
Sylvia Moore  
Dorothy Merchant  
Bernadine Thomas  
Phyllis Palmquist

Norma Stocking  
Hildor Thornes  
Carol Shaw  
Helen Sarsfield  
Phyllis Williams  
Dorothy Anthony  
Evelyn Hutchinson  
Catherine Strasser  
Betty Woodward  
Bettie Sims

● Girls majoring in Home Economics are eligible for this club. A convention is held each year, the last one being in Pullman and next year's will be in Spokane. Miss Edna Herrington is the club adviser.



First Row: Shuey, Polk, Moser, Williams, Cook, Bachman, Peterson, and Dempsey. Second Row: Lemon, Rhodes, Arnold, Ratliff, Browning, McGee, Francis, and V. Burton. Third Row: Sarsfield, Betton, Payne, Smith, Matlock, Mowbray, Miller, Dunne, Carpenter, and Toole. Fourth Row: Bergman, Sale, A. Burton, Ayers, and Turner.

## Junior Dramatic Club

### First Semester

Agnes Appa  
Jim Sarsfield  
Edith Birge  
Frank McRae

President  
Vice-President  
Secretary-Treasurer  
Sergeant-at-Arms

### Second Semester

Alma Mae Cook  
Jim Sarsfield  
Shirley Bachman  
Eugene Town

### MEMBERS

Agnes Appa  
Jean Arnold  
Harry Arthur  
Roy Ayers  
Shirley Bachman  
Jack Bergman  
Carl Betton  
Edith Birge  
Bill Braaten  
Donna June Browning  
Adrienne Burton  
Carol Carpenter  
Harold Christopher  
Beverly Christopher  
Beverly Koester  
Alma Cook  
Arlene Francis

Bill Fuller  
Phyllis Hall  
Herbert Harlow  
Bob Lamson  
Darlynn Matlock  
Grace McGee  
Lee Miller  
Connie Mowbray  
Eileen Moser  
Bob Nelson  
Gordon Davies  
Dorothy Parks  
Charlotte Payne  
Dorothy Pederson  
Donna Peterson  
Elva Polk

Joyce Ratliff  
Joyce Rhodes  
John Roberts  
Stanley Roseland  
Kenneth Sale  
Jim Sarsfield  
Gordon Sheuey  
Alene Steele  
Virginia Smith  
Anna Jo Toole  
Eugene Town  
Lefty Williams  
Jerry Dempsey  
Sherman Donovan  
Neil Dressler  
Jacqueline Dunn  
Evelyn Elmquist

● The Junior Dramatic Club is composed of underclassmen. It presents two convocations each year. Its social activities include parties and outings. Ray G. Hubbard is club adviser.



First Row: Gordon, Ellis, Glass, McDaniels, Carney, Mochel, Walters. Second Row: Young, Pearson, Coffee, Joy, McLeod, Jacobs, Smith, Coldeen. Third Row: Clem, Freeman, Bays, Roestel, Dry, Byrne, (adviser.)

## Junior Statesmen Club

### First Semester

John Dee Smith  
Del Freeman  
Jean Coffee  
Jeannette Ellis

### President

### Vice-President

Secretary and Treasurer  
Corresponding Secretary

### Second Semester

Jeannette Ellis  
Neal McLeod  
Doris Carney  
Doris Carney

### MEMBERS

Doris Carney  
Del Freeman  
Larry Jacobs  
Jean Coffee

Gerald Coldeen  
Don Dry  
Gerry Ludwig  
Neal McLeod  
Mary Moffat

Art Murray  
Jeannette Ellis  
John Smith  
Betty Walters

### NEW MEMBERS

Al Bays  
Vic Cobb  
Willis Clem  
Mary Glass

Fern Gordon  
Ruth Joy  
Della McDaniels  
Betty Mochel

Marian Pearson  
Ray Roestel  
Jim Young  
Felix Entenmann

● U. S. History students interested in government affairs and parliamentary procedure are eligible for membership in the Junior Statesmen club. This chapter at Rogers is one of the many throughout the United States. L. T. Byrne is the adviser.





First Row: Bays, and Tews. Second Row: Rogers, Ellis, Eng, Goble, and Williams. Third Row: Engle, Campbell, Ogle, and Murray. Fourth Row: Doolittle (Adviser), Johnson, Hufford, McLeod, and Nelson.

## Math Club

### First Semester

Effie Goble

Dorothy Fuller

Norm Tews

President

Vice-President

Secretary-Treasurer

### Second Semester

Al Bays

Johnnie Campbell

Marjorie Ogle

### MEMBERS

Wilbert Hufford  
Walter Nelson  
Al Bays  
Dorothy Fuller  
Marjorie Ogle  
Alan Taylor  
Phil Watts  
Helen Young  
Bob Johnson  
Neal McLeod

Art Maye  
Peggy Williams  
Effie Goble  
Elston Van Slyke  
Kenny Hunt  
Charles Ogle  
Howard Engle  
Fred Davies  
Johnny Campbell  
Brock Weir

Jeannette Ellis  
Kenny Tang  
Willis Clem  
Ima Lee Harrah  
Gene Rogers  
Norm Tews  
Erna Eng  
Bess Murray  
Ray Roedel  
Roy Hawke

● Any student having completed two years of mathematics is eligible for this club. Each semester a contest is sponsored by the members. W. E. Doolittle is the adviser.



First Row: R. Shulkin, Sweet, Broadhead, Katahira, D. Shulkin, Shauvin, and Jelinek. Second Row: K. Tang, Nixon, Pickens, W. Tang, and McLeod. Third Row: Benham, Lauder, and Youngman.

## Montero Club

----

### First Semester

Don Broadhead  
Don Shulkin  
Neal McLeod  
Kenny Tang  
Don Williams

### President

### Vice-President

### Secretary

### Treasurer

### Sergeant-at-arms

### Second Semester

Don Shulkin  
Vincent Pickens  
Ken Katahira  
Kenny Tang  
Don Broadhead

### MEMBERS

Bill Alfstad  
Jack Eller  
Ken Katahira  
Neal McLeod  
Vincent Pickens  
Don Shulkin  
Wesley Tang

Ken Benham  
John Jelinek  
Richie Shulkin  
Don Broadhead  
Frank Erickson  
Don Lauder

Walt Mobley  
Bill Nixon  
Kenneth Tang  
Don Williams  
Pat Shauvin  
Jim Youngman  
Bill Sweet

● This club, composed of boys only, supports a queen, takes an annual trip to Mt. Spokane, and has many other outdoor activities. J. W. Black is the adviser.



First Row: Hanifen, McGee, Birdsell, Shaw, Phillips. Second Row: Goble, Bysegger, Dahl, Casperson, Kendrick, Gaines. Third Row: Van Austene (Adviser), Pickens, Wilson.

## O. G. A. Club

### First Semester

Marjorie Kendrick

Betty Gaines

Beverly Wilson

Vince Pickens

President

Vice-President

Secretary

Treasurer

### Second Semester

Ella McGee

Hattie Crain

Virginia Phillips

Maxine Drape

### MEMBERS

Isla Bysegger  
Gullan Dahl  
Betty Gaines  
Margurite Patterson  
Marjorie Kendrick  
Helen Diehl  
Elemor Smith  
Edith Birdsell  
Jean Hanifen

Jim Kludt  
Vince Pickens  
Beverly Wilson  
Della McDaniel  
Betty Jane Kapel  
Hattie Crain  
Betty Mae Johnson  
Ella McGee  
Carol Shaw

Bessie Denman  
LaVerne Gosselin  
Ken Katahira  
Margaret Casperson  
Effie Goble  
Virginia Phillips  
Bernadine Thomas  
Sophie Langdon  
Betty Lou Miller

●The O. G. A. is a branch of the National Shorthand Honorary Society and was organized to create interest in shorthand and stenography.

Students completing one semester of shorthand and with A or B ratings in all subjects plus a satisfactory citizenship rating are eligible for membership.

Adviser of the club is Mrs. Ethel Van Austene.





First Row: Appa, Van Slyke, B. Johnston, and Johnson. Second Row: P. Austring, J. Austring, Eng, Barney, Fuller, Burns, and Fowler. Third Row: Simet (Adviser), Weller, Yenney, S. Johnston, Roestel, and Schiewe.

## Pep Club

----

### OFFICERS

<i>President</i>	-----	Bonnie Johnston
<i>Vice-President</i>	-----	Ray Roestel
<i>Secretary</i>	-----	Elston Van Slyke
<i>Treasurer</i>	-----	Spencer Fowler

### MEMBERS

Ray Roestel	Elston Van Slyke	Larry Trudeau
Al Bays	Spence Johnston	Evelyn McCafferty
Dorothy Fuller	Junior Penna	Spencer Fowler
Violet Johnson	Phyllis Austring	Dudley Yenney
Bonnie Johnston	Agnes Appa	Jean Barney
Erma Eng	Alan Taylor	Louie Eng
Alma Schiewe	Jo Weller	Bonnie Burns
Julienne Austring		Dale Fuller

●The Pep club's main function is to promote more enthusiasm among the student body at athletic events. It was formed out of the old "C" club. Several parties and outings are held during the year. Miss Bernice Simet is the adviser.



**First Row:** V. Johnson, Lowther, Lauder, Taylor, L. Johnson, Adams, Allen, Youngman, Hufford. **Second Row:** Hewitt, Bridewell, Diediker, Maye, Moe, Burkhardt, Sandberg, Kludt, Forsyth, Cobb, Everett, Johnston, and Rizzuto. **Third Row:** Jilbert, Young, McBreen, Franklin, Decker, Maloney, Pickens, Benham, Akins, Taylor and, Moller. **Fourth Row:** Benjamin (Adviser), Stevens, Dry, Jackman, Davies, Cuzzetto, Peterson, and Irby.

## "R" Club

Glen Burkhardt  
Don Lauder  
Bonnie Johnston  
Jim Maloney

*President*  
*Vice-President*  
*Secretary*  
*Treasurer*

### MEMBERS

Sandra Appa  
Gerald Adams  
Harold Akins  
Bill Alfstad  
Roy Allen  
Robert Beitey  
Clarence Block  
Don Broadhead  
Evajean Bridewell  
Glen Burkhardt  
Howard Clinton  
Victor Cobb  
Eugene Cuzzetto  
Fred Davies  
Floyd Debolt  
Walt Decker  
Donald Diediker  
Fern Edmonson  
Jack Eller  
Jerry Everett  
Warren Franklin

Gordon French  
Jim Forsyth  
Betty Hewitt  
Wilbert Hufford  
Harold Irby  
George Jackman  
Clayton Jilbert  
Bob Johnson  
Leonard Johnson  
Violet Johnson  
Bonnie Johnston  
Bob Kroske  
Jim Kludt  
George Ladd  
Don Lauder  
Cliff Lewis  
Jackie Lowther  
Jim Maloney  
Art Maye  
Jim McBreen  
Evelyn McCafferty  
Wes Moe

Carl Moller  
Leroy Peterson  
Vincent Pickens  
June Pierce  
Carol Priano  
Eugene Robbins  
Theresa Rizzuto  
Jack Sandberg  
Don Shulkin  
Gordon Steptoe  
Pat Stevens  
Bud Taylor  
Shirley Thompson  
Rudy Tortorelli  
Earl Waldron  
Broek Weir  
Jo Weller  
Don Williams  
Bob Young  
George E. Young  
Jim Youngman

● Upon receiving a letter in the varsity sports, the students are automatically members of the "R" Club. M. J. Benjamin is the club adviser.



First Row: Mitcham, Hutchins, Crook, Shauvin, and Hagman. Second Row: Pizzillo, McMahan, Gordon, Backman, Luse, Fullerton, Foster, and Anderson. Third Row: Johnson, Saxe, Olson, Jackson, Zat, and Bovee (Adviser). Fourth Row: Rhodes, Arnold, Brengle, and Kaler. Fifth Row: Jackman, Kelly, and Jansen.

## Spanish Club

### First Semester

Bob Jansen  
Howard Engle  
Lon Kelly  
Genevieve Luse

President  
Vice-President  
Secretary  
Sergeant-at-Arms

### Second Semester

George Jackman  
Eunice Jackson  
June Enos  
Frank Hutchins

### MEMBERS

Rex Alstrom  
Theo Anderson  
Ruth Baugh  
Annie Kate Brengle  
Jim Crook  
Walt Decker  
Betty Jo Ellingson  
June Enos  
Alta Foster  
Marie Fullerton  
Angelica Pizzillo  
Yolando Zat

Frank Hutchins  
George Jackman  
Eunice Jackson  
Bob Jansen  
Rosemary Johnson  
Dorothy Kaler  
Lon Kelly  
Genevieve Luse  
Marie McMahan  
Art Maye  
Doris Olson

Pat Shauvin  
Roy Allen  
Jean Arnold  
Shirley Bachman  
Carl Betten  
Dick Hagman  
Bob Hawke  
John Mitcham  
Joyce Rhodes  
Clara Saxe  
Alma Schiewe  
Maxine Stinger

● Students studying Spanish are eligible to become a member of this organization, which in turn is a member of the World League. Mrs. Marie Bovee is the club adviser.





FIRST SEMESTER

First Row: Weir, Taylor, Benoschek, Burkhardt, Lauder, and L. Johnson. Second Row: Diediker, Young, Youngman, and Lewis. Third Row: Williams, Sandberg, Broadhead, Maye, and B. Johnson.



SECOND SEMESTER

First Row: Broadhead, Taylor, Benoschek, Burkhardt, Johnson, and Birge. Second Row: Franklin, Monroe Hubbell (Adviser), Maye, Moe, Wagner, and Simonson.

## Fire Squad

● Purpose of the fire squad is to keep order in case of fire, earthquake, and explosions. The boys are picked because of their ability to hold order. Monroe Hubbell is adviser.



## FIRST SEMESTER

First Row: Waldron, Shulkin, Kertson, Broadhead, Nelson, Shauvin, Crook, Bays, Pickens, Tang. Second Row: Bysegger, Olson, Bradshaw, Gosselin, Hunt, Moore, Dickey, Meyers, Melcho, J. Ellis, V. Ellis. Third Row: Brooks, Trone, Rogers, Williams, Gale, Mead, Hewitt, Van Slyke, Fowler, D. West, True, L. West, Eller, Holcomb, Parkus, Alstrom, Katahira, Jacobs. Fourth Row: Simonson, McElroy, Nixon, Nickolson, Swain, Coffee, Carney, Taylor, Tucker, Olson, Kerr, Youngman, and Clinton



## SECOND SEMESTER

First Row: Shms, Stutsman, Kelly, Enos, Pizzello, Doyle, and Neuman. Second Row: Moller, Burkhardt, Boley, Pascuzzi, Scott, Melcho, Gabriel, and Williams. Third Row: W. Tang, Cartwright, Glass, Mead, Cuzzetto, and Kiefer. Fourth Row: K. Tang, Sampson, Huffman, Meranda, Strasser, Gulosis, and Gerkensmeyer. Fifth Row: Tucker, Jacobs, Concio, Tews, Nicholson, Roestel, Bays, Crook, Fowler, and Van Slyke.

## Hall Patrol

● Co-chairmen are Helen Gale and Kenny Tang. Co-captains are Marjorie Mead, Jeannette Ellis, Don Steele, Roger Meltvedt, Norman Tews, and Bob True. E. R. Jinnett is the adviser of the patrol.



## FIRST SEMESTER

First Row: Phillips, Anderson, Jackson, Moser, Welch, Williams, Cook, V. Bartholomew, Miller, J. Bartholomew, and McElroy. Second Row: Bond, Davls, Knight, Rhodes, Coulson, Parks, Smith, and Weaver. Third Row: Craig, Randall, Kerr, White, Robertson, Sandberg, Wolferman, McCafferty, Haynes, and Stryker. Fourth Row: Friday, Bruno, Weir, Young, Nerhelm, Hanson, Davls, Angel, and Cameron.



## SECOND SEMESTER

First Row: Anderson, Carlyl, White, Platter, Frost, Williams, McElroy, and McMillan. Second Row: Prevost, Dempsey, Mauck, Nelson, Stott, Miller, and Davls. Third Row: Harrah, Craig, Friday, Winnlinton, J. Bartholomew, Gill, Woodward, Carlisle, Wilson, and Sutliff.

## Study Hall and Library Workers

● Study hall workers are headed by Mrs. Edith Broberg; library workers, Mrs. Carolyn Kapek; Cafeteria study workers, Mrs. Ernestine Kalinowski.





. . . Fine Arts





First Row: Mr. Jinnett (Coach), Betten, Weller, Campbell, Bodey Second Row: Hansen, Williams, McDaniel, Anderson. Third Row: Jacobs, Westland, Tesdahl, Ohmsted.

## Debate

Date	Opponent	Decision
November 15.	Rogers affirmative at Fairfield	Rogers
December 4	Rogers affirmative at Central Valley	Rogers
December 15	Rogers negative at Sprague	Rogers
January 15	Rogers negative at Gonzaga	Rogers
January 22	Rogers affirmative at Rockford	Rogers
January 26 and 27	Winner of state tournament at Pullman	

### DEBATE SQUAD

Zelda Lee Anderson  
Della McDaniel

John Westland  
Chester Hansen

Larry Jacobs  
Warren Franklin

● Question: resolved, that the United States should own and operate the railroads. Debaters of Rogers won from teams of the Northeast Section the district championship and at the state tournament in Pullman won the state championship of Washington. E. R. Jinnett heads the team and has coached his team to 12 district championships and has won the state tournament twice. The group entered the National Tourney in Terre Haute, Indiana, in April.





**First Row:** Murphy, Alstrom, Kludt, Brengle, Carpenter, Pickens, Waller, Edmondson, Wagner, Tesdahl, Allen, Jackson, Concie, Bysegger, Mobley, and Smith.

## *"You Can't Take It With You"*

### CAST

Penny .....	.....Isla Bysegger
Alice .....	.....Elaine Waller
Essie .....	.....Madeline Murphy
Grampa .....	.....Jimmy Kludt
Ed .....	.....Bill Alfstad
Paul .....	.....Walter Mobley
Kolenkhov .....	.....John Dee Smith
Rheba .....	.....Annie Kate Brengle
Tony .....	.....Vincent Pickens
Donald .....	.....Rex Alstrom
DePinna .....	.....Bob Concie
Mr. Kirby .....	.....Stan Tesdahl
Mrs. Kirby .....	.....Evelyn Carpenter
Olga Katrina .....	.....Fern Edmonson
Miss Wellington .....	.....Eunice Jackson
Henderson .....	.....Johnny Westland
Police Officer .....	.....Al Olmstead
Policemen .....	.....Stan Wagner, Milyne Allen

● For the 28th time J. L. Purdy, dramatics director, presented a Broadway hit on the Rogers' stage. "You Can't Take It With You," a rollicking-comedy farce of the Sycamore home, was presented December 1 and 2.



First Row: Nelson, Kludt, Gale, Harris, Allen, Westland, Carpenter, Tesdahl, Wagner, Mobley, Concie, Payne, Jackson, and Alstrom.

## "Seven Keys to Baldpate"

### CAST

Elijah Quimby .....	.....	Walter Mobley
Mrs. Quimby.....	.....	Charlotte Payne
Wm. Hallawell Magee .....	.....	Jimmy Kludt
John Bland .....	.....	Stanley Wagner
Mary Norton .....	.....	Helen Gale
Mrs. Rhodes .....	.....	Evelyn Carpenter
Peters .....	2	Bob Concie
Myra Thornhill .....	.....	Emmie Jackson
Lon Max.....	.....	Rex Alstrom
Jim Cargan .....	.....	Stanley Tesdahl
Thomas Hayden .....	.....	Johnny Westland
Jiggs Kennedy....	.....	Bill Harris
Cop .....	.....	Maynard Nelson
The Owner of Baldpate .....	.....	Milyne Allen

● "Seven Keys to Baldpate," a mysterious melodramatic farce, was presented in the Rogers auditorium March 15. The story revolves around a bet that Bill Magee can write a novel in 24 hours and all the things that take place during his one night in Baldpate Inn. J. L. Purdy directed.



First Row: Moran, Bartholomew, Denman, and Smith. Second Row: J. L. Purdy (Adviser), and Patterson. Third Row: Box, Miller, Overland, Entenmann.

## Stage Crew

Lee Overland.....	Manager
Felix Entenmann .....	Electrician
Mark Miller .....	Assistant Electrician
Oliver Box .....	Carpenter
Bill Patterson .....	Fly Man
Mark Miller .....	Curtain Man

## PAINT CREW

Mary Denman, Manager  
Irene Drake

Del Freeman

Virginia Bartholomew  
Bob Murphy

● The stage crew is in charge of building the props and covering them with canvas. The stage crew handles the drops, curtains and lighting effects. J. L. Purdy is adviser.





First Row: Elmquist, Hoag, Roberts, Weller, Albright, and Simonson. Second Row: Tomlinson, Wesche, Sacks, Wagner, C. Earls, Goff, Crook, Harris, Leland Earls, McDonald, and Marska. Third Row: Starr (Director), Miller, Updike, Ellis, Letha Earls, Innes, Woodell, Lancaster, L. Christensen, Barnes, Rice, A. Christensen, VanSlyke, Whipple, Yenny, Erickson, and Nixon. Fourth Row: De Croff, Wairhaye, Webster, Hill, Johnston, McConnell, Tang, Hosca, Sampson, Jelinek, Freeman, Simpson, and Meltvedt. Fifth Row: Waldrop, Ross, Bergman, and Nicholson.

## Concert Band

Roger Meltvedt  
John Sampson  
Wesley Tang  
Jay Tomlinson  
Leland Earls, Arnold Christensen  
Bill Harris, Lloyd Christensen  
Ward McDonald, John McConnell

President  
Vice-President  
Secretary  
Student Director  
Uniform Sergeants  
Business Managers  
Librarians

### MEMBERS

Thelma Johnston  
Don Lancaster  
Victor Marska  
John McConnell  
Ward McDonald  
Roger Meltvedt  
Melvin Scheel  
Selma Simonson  
Joe Simpson  
Wesley Tang  
Jay Tomlinson  
Rosemary Updike

Rodney Wagner  
Elaine Albright  
Jeanne Barnes  
Jack Bergman  
Arnold Christensen  
Lloyd Christensen  
Fred Crook  
Ted De Croff  
Chester Earls  
Leland Earls  
Betty Hosca  
Clyde Innes  
John Jelinek

Bertie Waldrop  
Howard Webster  
Letha Earls  
James Ellis  
Evelyn Elmquist  
Frank Erickson  
Eugene Freeman  
Carolyn Goff  
Bill Harris  
Ray Hoag  
Bill Miller  
Ken Nickolson  
Bill Nixon

Eugene Rice  
John Roberts  
Wilmington Ross  
Bill Sacks  
John Sampson  
Jo Weller  
Christina Wesche  
Bill Whipple  
Frances Wairhaye  
Ralph Wooddell  
Dudley Yenny  
Elston Van Slyke

● The concert band, under the direction of Glenn B. Starr, participates in all the football games with colorful exhibitions between halves. The band holds a concert every spring and is a major attraction at the Rogers "Night Under the Stars."

It also performs at pep convocations, parades, and is called upon to furnish music by several organizations.



First Row: Mr. Starr (Director). Second Row: Strasser, Bradshaw, Coffman, Scott, Williams, Bodey, Dressler, and Rishton. Third Row: Earls, Burrill, Knight, Williams, Weitensteiner, Prevost, Johnson, Kelly, Olson, and Anthony. Fourth Row: Gululis, Skeffington, Brandt, Owen, Kraut, Moser, Kidd, Albright, Weller, Roberts, Pederson, Tomlinson, Howard, Christanson, Barnes, Fowler, Anderson, and Olson. Fifth Row: Conrad, Lindren, Boisard, Colegrove, Langbehn, Denman, Smith, Steele, Harris, Soper, Betten, Allen, Tang, Freeman, Lancaster, and Gray.

## Orchestra

### OFFICERS

Mabel Bradshaw  
Spencer Fowler  
Catherine Strasser  
Leland Earls  
Ben Luding and Neil Dressler  
Jay Tomlinson and Elmer Burrill

*President*  
*Vice-President*  
*Secretary*  
*Student Director*  
*Librarians*  
*Business Managers*

### MEMBERS

Elaine Albright  
Milyne Allen  
Grace Anderson  
Virginia Anthony  
Jeanne Barnes  
Carl Betten  
May Belle Bodey  
Jean Boisard  
Mabel Bradshaw  
Noreen Brandt  
Elmer Burrill  
Lloyd Christensen  
Dean Coffman  
Earl Colegrove  
Dolly Jean Conrad  
Bessie Denman  
Neil Dressler  
Leland Earls  
Spencer Fowler

Eugene Freeman  
Maria Gululis  
Bud Gray  
Bill Harris  
Lloyd Howard  
Rosemary Johnson  
Virginia Kelly  
Pearl Kidd  
Doris Knight  
Kathryn Krant  
Mae Lancaster  
Louise Langbehn  
Myrl Lindgren  
Ben Luding  
Shirley Miller  
Mary Ethel Mors  
Eilene Moser  
Annamae Olson

Mary Olson  
Ralph Owens  
Dorothy Pederson  
Gordon Polk  
Margaret Prevost  
Jean Rishton  
John Roberts  
Lorraine Scott  
Patsy Skeffington  
Virginia Smith  
Loren Soper  
Shirley Steele  
Catherine Strasser  
Jay Tomlinson  
Wesley Tang  
Bertha Weitensteiner  
Jo Weller  
Doris Williams  
Marion Williams

● The orchestra is composed of high school musicians and plays for commencement, baccalaureate, operettas, all school plays, and P.-T. A. programs. Glenn B. Starr is director.



**First Row:** De Chenne, Earls, Sutton, Raaberg, Bryan, and Parks. **Second Row:** Larson, Wynkoop, Cook, Olson, Anderson, Shaw, Meicho, Scott, Knight, and Blodgett. **Third Row:** McMahan, Moore, Ratliff, Denman, Detmar, Albright, Williams, Valentine, and Carpenter. **Fourth Row:** Stanley, L. Earls, Concie, Polk, Fish, Sampson, Reynolds, Wagner, Harris, Cape, Hunsberger, C. Earls, and Teraceno.

## *Vested Choir*

### MEMBERS

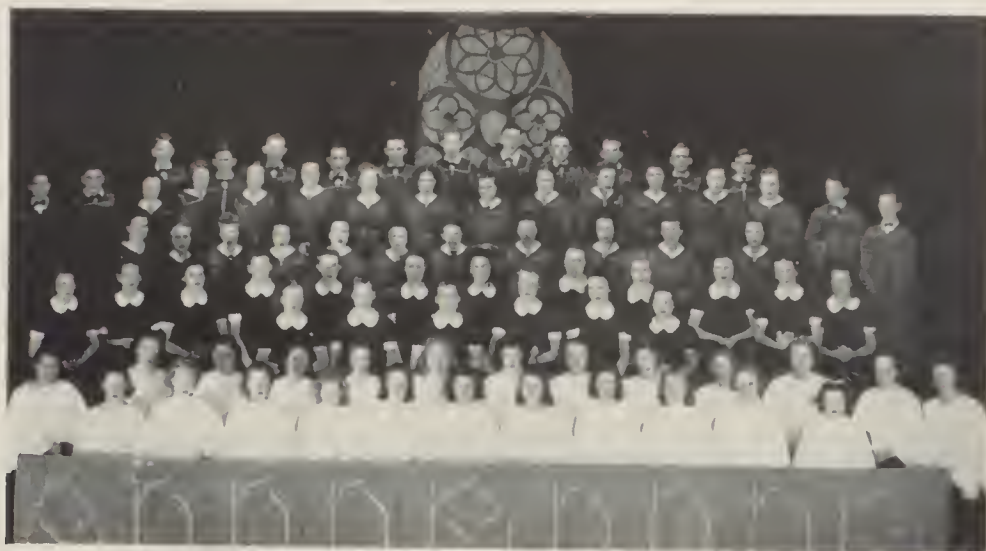
Elaine Albright  
Grace Anderson  
Margaret Blodgett  
Betty Bryan  
Virginia Bryan  
Alma Mac Cook  
Evelyn Carpenter  
Beatrice DeChenne  
Mary Denman  
Delores Detmar  
Letha Earls  
Clarice Flaughter  
Doris Knight  
Mary Lee Larson  
Marie McMahan

Sylvia Moore  
Mary Carol Moss  
Anna Mac Olson  
Dorothy Parks  
Lucille Raaberg  
Betty Ratliff  
Ethel Scott  
Carol Shaw  
Adele Sutton  
Maxine Valentine  
Hermia Vincent  
Doris Williams  
Betty Wynkoop  
Charles Alberg  
Wayne Campbell

George Cape  
Bob Concie  
Chester Earls  
Leland Earls  
Russell Fish  
Bill Harris  
Wayne Hunsberger  
Gordon Polk  
Mac Reynolds  
Dick Sadd  
John Sampson  
Kenneth Stanley  
John Teraceno  
Stanley Wagner  
Vincent Pickens

● The Vested Choir participates in two festivals; one in December and the Spring Festival on May 3. The choir has also sung at many other outside programs. Blanche Hill Swenson is the director.





First Row: Grein, Miller, Forrester, Dunn, Williams, Mulherin, Delage, Hammenburg, Howell, Farr, and Polk. Second Row: Venti, Cameron, Henry, Berg, Payne, Entenmann, Hall, Platter, Rhodes, Stevens, Helgert, Hardy, and Scott. Third Row: McGee, Vanderhoff, Roberts, Moss, Arnold, and Knight. Fourth Row: Smith, Shultz, Dubock, Sarsfield, Kesterman, Ring, Caferro, Bonser, Rhodes, Valentine, Leslie, and Parks. Fifth Row: Meleho, Larson, Wykoop, McMahan, De Chenne, Earls, Sutton, Raaberg, Shaw, Bryan, and Blodgett. Sixth Row: Earls, Fish, Moore, Ratliff, Denman, Anderson, Flaughner, Olson, Vincent, Scott, Carlson, Detmar, Williams, Carpenter, Polk, and Stanley. Seventh Row: Concie, Arnold, Campbell, Reynolds, Wagner, Pickens, Harris, Leamer, Hunsburger, Lawson, and LeVan.

## Girls' Glee Club

Elaine Albright  
Grace Anderson  
Jean Arnold  
Beverly Bard  
Margaret Berg  
Jean Bonser  
Margaret Blodgett  
Virginia Bryan  
Betty Cameron  
Alma Mae Cook  
Beatrice DeChenne  
Jean Dnbach  
Clarice Flaughner

Andrey Grein  
Phyllis Hall  
Shirley Harty  
Doris Knight  
Jean Leslie  
Grace McGee  
Mary Lee Mulherin  
Mary Carol Moss  
Dorothy Parks  
Charlotte Payne  
Elva Polk  
Joyce Rhodes  
Iva Roberts

Virginia Sarsfield  
Rose Schults  
Phyllis Smith  
Maxine Valentine  
Anita Vanderhoff  
Donna Rhodes  
Carol Shaw  
Gloria Stevens  
Anna Jo Toole  
Hazel Watts  
Dorothy Van Patter  
Mayme Ring  
Delores Detmar

## Drum and Bugle Corps

● The girls' Drum and Bugle Corps joins with the band and the Pirette girls in furnishing entertainment at Rogers football games. This group plays a very important part in making the games a success. Glenn B. Starr is the director.



Left Row: Hodge, West, Priano, Ratliff, Watts, Diehl, Scliffa, Gordon, Whitmore, Wilson, Shores, and Moran. Center: David Rubino. Right Row: Gaines, Murphy, Blair, Watts, McCormick, Doyle, Burns, Lowther, Harker, Brooks.

## Pirettes

### FIRST YEAR LETTER WINNERS

Deretha Aigner  
Shirley Bachman  
Eldona Belyea  
Violet Benway  
Emmie Black  
Patricia Cassidy  
Marguerite Clark  
Helen Coffee  
Dorothy Collins  
Shirley Dahlgren  
Pearl Frost  
Marcella Gendreaux  
Doris Grindle  
Estella Hanson  
Laura Harris  
Bernice Henry

Erna Kuesterman  
Marie McMahan  
Kathryn Krant  
Laverna McFarlan  
Lee Ora Manning  
Shirley Lord  
Dorothy Merchant  
Maxine Miller  
Virginia Miller  
Betty Mochel  
Florence Mortrud  
Rita Moser  
Nadyne Nelson  
Doris Olson  
Mary Perry  
Frances Priano

Lorraine Puffer  
Louise Quade  
Loreen Rhoads  
Jean Short  
Patsy Skeffington  
Elaine Scott  
Norma Stocking  
Adele Sutton  
Jean Thorson  
Helen Turner  
Mildred Ure  
Maxine Valentine  
Betty Walters  
Peggy Williams  
Phyllis Williams  
Bernice Wilson

### SECOND YEAR LETTER WINNERS

Theo Anderson  
Louise Langbehn  
Mary Mors

Evelyn O'Leary  
Delpha Reamer  
Margaret Reeder

Violet Richardson  
Vera Rodolph  
Marguerite Thomas



First Row: Stanley, Van Slyke, Hansen, Love, Rizzuto, Kroske, Ellis, Austrung, and Ostlund. Second Row: Polk, Ratliff, Carpenter, Fuller, Thomas, Merrill, Tang, and Mobley. Third Row: A. P. Coburn (Business Adviser), Young, Weir, F. Moe, Johnson, and L. T. Byrne (adviser).

## Rogers Record

### FIRST SEMESTER

June Love	Editor-in-Chief
Francis Moe	Copy Chief
Julienne Austrung	Assignment Editor
Bob Johnson	Sports Editor
Brock Weir	Feature Editor
Dorothy Fuller	Girls' Sports
Lillian Ostlund	Exchange Editor
Jeannette Ellis	Circulation Manager
Peggy Powell	Art Editor
John Pike	Assistant Art Editor
Rex Hansen, Bob Kroske	Copy Readers
Walt Mobley, Elston Van Slyke, Kenny Tang	Feature Writers
Jim Young, Merten Merrill	Sports Writers
Bernie Thomas, Evelyn Carpenter	Typists
Theresa Rizzuto	Advertising Manager
Gordon Polk, Kenneth Stanley	Advertising Solicitors
Betty Ratliff	Bookkeeper





First Row: Rizzuto, Carney, Austring, Thomas, Ellis, and Hanifen. Second Row: Taylor, Carpenter, Walker, Fuller, Van Slyke, and Johnston. Third Row: Young, Coffee, Maye, Clem, and Byrne (Adviser).

## Rogers Record

### SECOND SEMESTER

Julienne Austring

Warren Franklin

Bernadine Thomas

Art Maye

Jim Young

Bonnie Johnston

Elston Van Slyke and Dorothy Walker

Lucille Raaberg

Evelyn Carpenter

Dorothy Fuller

Louise Langbehn

Kathleen Friday

Jim Maloney, Bud Taylor, and Don Lander

Willis Clem, Bill Alfstad, and Jeannette Ellis

Rex Alstrom and Annamæ Olson

Jean Coffee, Doris Carney, and Howard Clinton

Threasa Rizzuto

Gordon Polk

Terry Hanifen

*Editor-in-Chief*

*Copy Chief*

*Assignment Editor*

*Sports Editor*

*Assistant Sports Editor*

*Girls Sports*

*Feature Editors*

*Exchange Editor*

*Circulation Manager*

*Office Manager*

*Art Editor*

*Assistant Art Editor*

*Sports Writers*

*Copy Readers*

*Feature Writers*

*Reporters*

*Business Manager*

*Advertising Manager*

*Solicitor*



**First Row:** Austrling, Carney, Rizzuto, Fuller, Van Slyke, Clinton, and Ellis. **Second Row:** Carpenter, Raaberg, Wynkoop, Thomas, Olson, Johnson, and Johnston. **Third Row:** Byrne (Adviser), Coffee, Alstrom, Clem, Maye, Franklin, and Young.

## *Treasure Chest Staff*

Editor .....	Dorothy Fuller
Assistant Editors .....	Bernie Thomas, Bill Alfstad, Jim Young, Willis Clem
Copy Editor .....	Elston Van Slyke
Art Editor .....	Bob True
Assistant Art Editor .....	Lonise Langbehn
Sports Editors .....	Don Lauder, Bonnie Johnston, Art Maye
Snapshot Editors .....	Jim Maloney, Warren Franklin
Features .....	Dorothy Walker
Girls League, Boys' Federation .....	Annamae Olson
Activities .....	Bud Taylor
Calendar .....	Howard Clinton
Class History .....	Jeannette Ellis
Departmental .....	Julienne Austrling, Lucille Raaberg, Betty Wynkoop
Advertising Manager .....	Theresa Rizzuto
Circulation Manager .....	Doris Carney
Subscription Manager .....	Jean Coffee

# Calendar

## FIRST SEMESTER

### SEPTEMBER

- 5—School opens.
- 13—First con of year.
- 21—Sing con.
- 22—Football—Merry-go-round game.
- 28—Record con.
- 29—Tex Rankin con.

### OCTOBER

- 6—Football—Rogers vs. Gonzaga.
- 13—Football—Rogers vs. North Central.
- 18—Football—Rogers vs. Lewis and Clark.
- 19-20—Teachers' Institute.
- 25—Rubinoff con.
- 27—Football—Rogers vs. Gonzaga.

### NOVEMBER

- 2—Football—Rogers vs. North Central.
- 3—Arthur Hook—Deep sea diver con.
- 10—Football—Rogers vs. Lewis and Clark.
- Armistice Day con.
- 16—Sadie Hawkins dance.
- 23-24—Thanksgiving vacation.
- 29—Congressman Charles Leavy.

### DECEMBER

- 1-2—All-school play, "You Can't Take It With You."
- 4—Debate—Rogers vs. Central Valley.
- 8—Harding debate pay con.
- 11—Senator Schwellenbach con.
- 13—Honor Society con.
- 15—Music festival and matinee dance.
- 20—Christmas program and Christmas vacation starts.

### JANUARY

- 9—Basketball—Rogers vs. North Central.
- 11—Basketball—Rogers vs. Lewis and Clark.
- 12—Band concert.
- 16—Basketball—Rogers vs. Gonzaga.
- 16—Rogers-Gonzaga debate.
- 18—Basketball—Rogers vs. North Central.
- 19—Footlights pay con.
- 20—Senior prom.
- 22—Awards con.
- 23—Graduation exercises.
- 23—Basketball—Rogers vs. Lewis and Clark.

- 25—Basketball—Rogers vs. Gonzaga.

### FEBRUARY

- 2—Junior Dramatic pay con.
- 6—Basketball—Rogers vs. North Central.
- 8—Basketball—Rogers vs. Lewis and Clark.
- 13—Basketball—Rogers vs. Gonzaga.
- 15—Basketball—Rogers vs. North Central.
- 20—Basketball—Rogers vs. Lewis and Clark.
- 21—Washington's birthday con.
- 27—Basketball—Rogers vs. Gonzaga.
- 29—Art Club pay con and leap year dance.

### MARCH

- 4—Student Council con.
- 7—Sightless vision pay con.
- 8—P.-T. A. Open House.
- 13—Basketball awards con.
- 14—Gonzaga Glee Club con.
- 14—Matinee dance.
- 15—All-school play, "Seven Keys to Baldpate."
- 21—Dr. Charles Watkins con.
- 29—Report cards out.
- 29—Spring vacation starts.

### APRIL

- 23—Baseball—Rogers vs. North Central.
- 25—Baseball—Rogers vs. Lewis and Clark.
- 26—Track—Rogers vs. North Central.
- 30—Baseball—Rogers vs. Gonzaga.

### MAY

- 3—Track—Rogers vs. Lewis and Clark.
- 3—Spring Music Festival.
- 7—Baseball—Rogers vs. North Central.
- 9—Baseball—Rogers vs. Lewis and Clark.
- 10—Track—Rogers vs. Gonzaga.
- 14—Baseball—Rogers vs. Gonzaga.
- 17—Track—District meet.
- 21—Baseball—Rogers vs. North Central.
- 23—Baseball—Rogers vs. Lewis and Clark.
- 25—State Track Meet at Pullman.
- 25—Senior prom.
- 28—Baseball—Rogers vs. Gonzaga.

### JUNE

- 2—Baccalaureate.
- 7—Commencement.
- 12—School out.





1. Jimmy
2. Happy
3. Bashful
4. Still Swinging
5. Style
6. Finish

7. Flying High
8. Still There
9. Tarzan
10. Speed
11. Power

12. 41 degrees, 5 minutes
13. Hurdlers
14. Spring
15. Hanging On
16. Timberman

17. Work
18. Endurance
19. A New Boy
20. Serious
21. Kenny
22. Tennis Coaches



. . . Sports



## *Sports Coaches*

-----

**E. T. BECHER**, Rifle coach—Received the responsibility of coaching the rifle team in 1936, coached the rifle team into the "B" division of the National Rifle Association.

**M. J. BENJAMIN**, Athletic director and golf coach—Always has a very good golf team, coached a group of boys who went on to win the 1939 golf title.

**J. W. BLACK**, Baseball coach and "B" squad coach—Has coached two championship baseball teams and always helps the younger football players along.

**CARL ELLINGSEN**, Head Football Coach—Graduated into the senior ranks of coaches; a good coach and teacher of the things that are learned on an athletic field.

**JAMES ELSENSOHN**, Football line coach and assistant track coach—A good man for any coach to have around who always contributes a lot to a team's success.

**PAUL MACGOWN**, Freshman baseball and basketball—Finishes his second year as a coach to the greenies.

**JACK MOOBERRY**, Basketball and track coach—Keeps busy all the time with sports always has a good track team and a scrappy bunch of basketballers.

**MISS MABEL PERKINS**, Girls' Tennis Coach—Makes many young girls more interested in sports and lead more active lives.

**L. W. SALTZ**, Tennis and freshman football coach—Has had many championship teams in freshman football to count along with a good bunch of varsity tennis players each year.

## *Freshman Basketball*

-----

● Winding up the season with a little better than average percentage, the freshman basketball squad made up in fire and speed what they lacked in size. The squad, coached by Paul Mac Gown, consisted of the following future varsity players; Richard Shulkin, Junior Penna, Bob Lamon, Grant Brown, Clifford Smith, Bob Barnhardt, Don Lancaster, Kenneth Sale, "Lefty" Baker, Bill Love, Lance Orton, Bob Eagan, Jimmy Franklin, Bob Olsen, Charles Albery, Al Ayers, Malcolm Updike, Roy Wakeley, and Hubert Gamble.

## *Freshman Track*

-----

● The freshman tracksters turn out every day of the week with the varsity squad. The small squad of 29 met the following schools: Havermale, Libby Junior High, Lewis and Clark, and North Central. Jack Mooberry is the coach.





First Row: Broadhead, Lewis, Taylor, L. Johnson, Irby, Bob Johnson, Weir. Second Row: Roestel, Decker, Balch, Williams, Burkhardt, Sandberg, Waldron, Lauder, Peterson, Akins. Third Row: Eller, Cuzzetto, Youngman, Moran, Allen, Jones, Moller, Nelson, D. Johnson. Fourth Row: Forsyth, Speck, Young, Pederson, Stevens, Trudeau, Hansen, Triplet, Tortorelli. Fifth Row: Elsenstein, Ellingsen, Collins, Hufford, Gilbert, Diediker.

## Football Lettermen

### THIRD YEAR LETTERMEN

DON WILLIAMS, halfback, the best in the west.  
CLIFFORD LEWIS, tackle, plenty of what it takes.

### SECOND YEAR LETTERMEN

GLEN BURKHARDT, halfback, small but mighty.  
HAROLD IRBY, guard, good things come in small packages.  
BROCK WEIR, tackle, self-made star.

### FIRST YEAR LETTERMEN

JACK ELLER, quarterback, too bad he hasn't another year.  
RUDY TORTORELLI, guard, the backbone of next year's line.  
JACK SANDBERG, quarterback, the brain of the team.  
LEONARD JOHNSON, guard, held plenty in the line.  
EARL WALDRON, end, a good man.  
JIM YOUNGMAN, fullback, plenty tough and mighty.  
DON LAUDER, center, in the middle of things.  
BOB JOHNSON, end, the city's best.  
JIM FORSYTH, quarterback, could be used next year.  
PAT STEVENS, center, in the middle of things next year.  
WALTER DECKER, fullback, tough luck kid.  
DON BROADHEAD, end, as hard as nails.  
ROY ALLEN, fullback, made plenty of tackles.  
WINSTON TAYLOR, quarterback, good and tricky.  
EUGENE CUZZETTO, tackle, 220 pounds of good football in the line.  
LEROY PETERSON, tackle, too bad he hasn't another year.  
GEORGE YOUNG, quarterback, fate injured this swell fellow.  
CARL MOLLER, end, lots of fight.

### MANAGERS

DON DIEDIKER, CLAYTON JILBERT, and WILBERT HUFFORD.



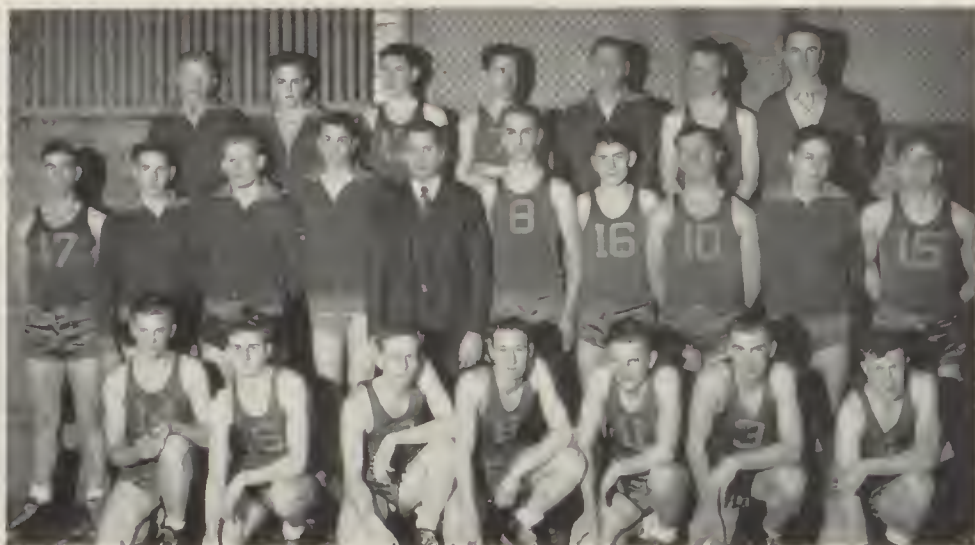
First Row: B. Johnson, Weir, Lewis, Irby, Lauder, L. Johnson, and Broadhead. Second Row: Allen, Forsyth, Burkhardt, and Williams.

## Football Schedule

Date	Opponents			
September 15.	Rogers..	34	West Valley.	0
October 3 ....	..Rogers	6	Gonzaga ....	12
October 13 ..	..Rogers.	13	North Central..	0
October 20 ....	..Rogers	0	Lewis and Clark..	13
October 27 ..	..Rogers	6	Gonzaga ....	7
November 3 ..	..Rogers	0	North Central.	7
November 10 .	..Rogers.	0	Lewis and Clark..	20

● Although the Rogers Pirate team did not finish "tops" this year, they had plenty of fight and fire, but the breaks seemed to fall against them as they ended most of the games by close scores.

The Pirates were coached by Carl Ellingsen, assisted by James Elsensohn.



First Row: Johnson, Franklin, Moe, Maye, Alfstad, and Akins. Second Row: Nelson, Jones, Tang, Benham, Coach Mooberry, McBreen, Sweet, Decker, Montague, and Youngman. Third Row: Bergman, Rusch, Shaw, Maloney, Pebles, Martin, and Manager Hifford.

## Basketball

### SQUAD

Harold Akins  
Bill Alfstad  
Ken Benham  
Sten Bergman  
Howard Clayton  
Walt Decker  
Warren Franklin

Bob Johnson  
Les Jones  
Don Lauder  
Jim Maloney  
Art Maye  
Lee Martin  
Jim McBreen  
Wes Moe

John Montague  
Morris Nelson  
Dan Pebles  
Harold Rusch  
Bill Sweet  
Lloyd Shaw  
Wes Tang

### SEASON'S SUMMARY

Date	Opponent	Where Played	Score
January 9.....	North Central.....	North Central..	25-32
January 11.....	Lewis and Clark.....	Rogers .....	23-17
January 16.....	Gonzaga .....	Rogers .....	21-22
January 18.....	North Central.....	Rogers .....	28-26
January 23.....	Lewis and Clark.....	Lewis and Clark..	26-23
January 25.....	Gonzaga .....	Gonzaga .....	22-10
February 6.....	North Central .....	North Central.....	28-19
February 8.....	Lewis and Clark.....	Rogers .....	18-12
February 13.....	Gonzaga .....	Rogers .....	28-24
February 15.....	North Central.....	Rogers .....	28-18
February 20.....	Lewis and Clark.....	Lewis and Clark..	23-15
February 27.....	Gonzaga .....	Gonzaga .....	37-30

● Winning 9 out of 22 games, the Rogers basketball team ended the season a little lower than their usual standing. Although the team put everything they had into it, they were outscored in all but two of the city games.





First Row: Sandberg, Allen, Schuler, Speck, Balch, Linden, H. Burkhardt, True, and Decker. Second Row: Updike, Johnson, Moran, Pebles, Herrington, Foster, Adams, Cake, Milburn, Tang, Cartwright, and Mooberry (Coach). Third Row: Akins, Waymire, Maine, Smith, Hunt, Peterson, Sasai, Hagman, Hutchins, Mael, McClelland, Maye, and Graybot. Fourth Row: Boge, Westland, Stevens, Sweet, Erickson, Eller, Hill, McVey, Soper, Mories, and Town. Fifth Row: Birdsell, Jilbert, Enos, Bacon, Schmidmiller, Palmiter, Smith, Fuller, Lemon, Meyer, Harris, Jansen, and Thompson. Sixth Row: Francis, Nicholson, Gillo, Teracino, Whaley, Orton, Wooddell, Homann, Casey, Coleman, Olson, Brown, and Donoh. Seventh Row: Finn, Ladd, Coldeen, Lewis, Paul, Smith, Shay, Schmidmiller, and Kelley.

## Track

### SEASON'S SCHEDULE

April 20.....	Rogers Relays
April 26.....	Rogers at North Central
May 3.....	Rogers at Lewis and Clark
May 10.....	Gonzaga at Rogers
May 17.....	All-City Meet

### SQUAD MEMBERS

Gerald Adams	Bob Jansen	Dan Pebles	Ward Turner
Harold Akins	Dan Johnson	Clair Peterson	Delbert Waymire
Roy Allen	Larry Kempsey	Pat Stansbury	Ray Whaley
Ray Ayers	George Ladd	Lefford Smith	Norman White
Dell Balch	Kenny Landry	Lloyd Shaw	Don Brown
Howard Burkhardt	Bob Linden	Pat Stevens	Harvey Coldeen
Frank Cake	Bob Laders	Jack Sandberg	Wallace Bacon
Jack Cartwright	Charles McMillan	Frank Sasai	Francis Dauncey
Larry Cowles	Leslie McClelland	Dave Birdsell	Evan Eller
Gene Cuzzetto	Bud McGhee	Kenny Schneidmiller	Bill Fuller
Walt Decker	Kenny McVey	Charis Schuler	Richard Erickson
Verne Enos	Vernon Mael	Marvin Scott	Clair Finn
Richard Francis	Bob Meyer	Fred Shiosaki	Bob Maye
Neil Foster	Delmar Maine	Clifford Smith	Kenneth Johnson
Al Gossett	Richard Millburn	Loren Soper	Casey Jones
Olav Graybot	Jean Morris	Joe Speck	Bennie Lewis
Bob Harrington	Barney Moran	Bill Sweet	Melvin Leyde
Alfonse Hill	Douglas Newton	Bud Taylor	Bob Olson
Kenny Hunt	Kenny Nicholson	Bob True	Malcolm Updike
Frank Hutchins	Don Lutz	Wes Tang	Earl Young
Roy Headley	Gordon Palmiter	Gene Town	Lance Orton

● Many promising prospects are coming up from the freshman and sophomore classes in one of the largest turnouts for several years. The Rogers track team meet all the other city high schools. Jack Mooberry is coach.





First Row: Black (Coach), D. Shulkin, Forsyth, Broadhead, Benham, Lauder, Benoschek, Katahira, and Maloney. Second Row: McBreen, Montague, Coulson, Wolferman, Cummings, Johnson, Youngman, Cobb, and Shauvin. Third Row: Jones, D. Nelson, Kelly, R. Shulkin, Disciasio, Triplett, N. Nelson, Braaten, and Rusch. Fourth Row: Brauenburg, Reneau, Hanson, Bomersheim, Williams, Jelinek, Arnold, and Brown. Fifth Row: Trudeau, Marier, B. Hawke, R. Hawke, Lukaszeski, Jenkins, Boulliard, and Tortorelli. Sixth Row: Wimpy, Lindgren, Reasoner and Christopher (Managers).

## Baseball

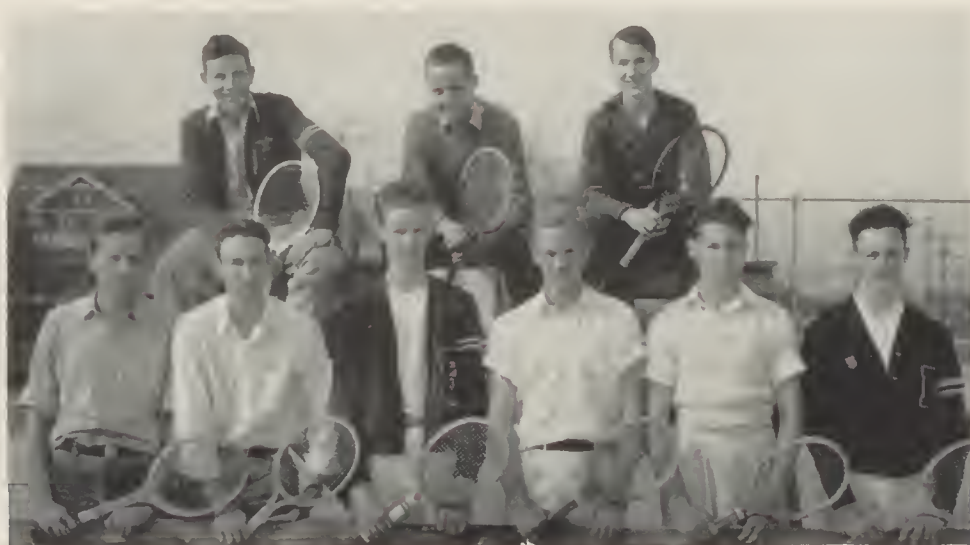
### SCHEDULE

Date	Opponent	Where Played
April 23	North Central	Rogers
April 25	Lewis and Clark	Lewis and Clark
April 30	Gonzaga	Rogers
May 7	North Central	North Central
May 9	Lewis and Clark	Rogers
May 14	Gonzaga	Gonzaga
May 21	North Central	Rogers
May 23	Lewis and Clark	Lewis and Clark
May 28	Gonzaga	Rogers

### MEMBERS

Forsyth	Shauvin	Breeden	Jenkins
Benham	D. Nelson	Brown	Reneau
Broadhead	Jones	Disciasio	Seay
D. Shulkin	Davis	Lukaszeski	Brouillard
Maloney	Montague	M. Nelson	R. Hawke
Benoschek	Tortorelli	Rusch	B. Hawke
Katahira	Wolferman	Arnold	Hanson
Cobb	Kelly	Bomersheim	Williams
Lauder	R. Shulkin	Trudeau	Marier
Cummings	Triplett	Coulson	Butts
Johnson	Weaver	Jelinek	McBreen
Youngman	Braaten	Brauenburg	Reagan

● Continuing his usual procedure, Coach J. W. Black turned out another above average baseball team this year. Though they won most of their pre-season games, the squad had only six returning lettermen: Jim Forsyth, Ken Benham, Don Broadhead, Don Shulkin, Jim Maloney, and Jim Youngman.



First Row: Moe, Maye, Pickens, Meltvedt, Dry, and Jackson. Second Row: Davies, Kludt, and Lancaster.

## Boys' Tennis

### LADDER

\*Fred Davies  
Art Maye  
\*Jim Kludt  
\*George Jackman

\*Vincent Pickens  
Wes Moe  
Bill Alfstad  
Rort Waldrop

Jim Weller  
Noble Valsvig  
Don Dry  
Roger Meltvedt

(Those starred are former letter winners.)

● This year finds four lettermen returning. Last year Art Maye won the fall tournament. L. W. Saltz is coach.

## B Squad Football

● This squad turned in a very good record, winning four of five games that were played.

The "B" squad, under the supervision of Coach Black, receive no award for their playing, but are the fellows who make up next year's team.



First Row: Freeman, Birge, and Dhondt. Second Row: Knesal, and Irby. Third Row: Cowles .

## Golf

---

●The Rogers boys are the defending champions for 1940. The golf team plays a double round-robin with each of the high schools. The team with the largest number of points is the champion team. M. J. Benjamin is the coach. Those turning out were Bill Alfstad, Harold Irby, Warren Van Hook, Kenny Hunt, Del Freeman, Al Knesal, John Kelly, Marion Dhont, Al Porta, John Town, Harvey Strand, Bud Johnson and Frank Erickson.

## Freshman Football

---

●Freshman football champions for 1939!

The green-shirted frosh swept through a season undefeated. The baby buccaneers gathered 50 points to their opponets' 13.

Young and promising future varsity players are: "Dodo" Penna, Richard Shulkin, Bob Lamon, Malcolm Updike, and Bill Love. Nice going, frosh.



First Row: Nelson, Crook, Ladd, and Jenkins. Second Row: Becher (Advisor).

## *Rifle Team*

### MEMBERS

George Ladd  
Hobart Jenkins

Jim Crook

Maynard Nelson  
Francis Kordus

● With only two returning lettermen, George Ladd and Hobart Jenkins, and a very small schedule, the outlook for the rifle team in future years is rather bleak. Only one other city high school, Lewis and Clark, will compete with Rogers; the only other meet is with West Valley. E. T. Becher is the coach, while Myron D. Ladd is the trainer.





First Row: Ludwig, Lowther, and Burns. Second Row: Baugh, and Cook. Third Row: A. Cook, Raaberg, Wynkoop, and Gale.

## Spring Sports Queen

●Winning the 1940 Sports Queen contest was Jackie Lowther. She was a candidate from the "R" club, and Bud Taylor was her manager. Jerry Ludwig and Bonnie Burns were the princesses.

All participants and their managers are listed below:

Alma Mae Cook	Junior Dramatic	Jim Sarsfield
Jackie Lowther	"R"	Winston Taylor
Jerry Ludwig	Art	Frank Cake
Vivienne Cook	Harding Debate	Kenny Hunt
Betty Wynkoop	Montero	Bill Nixon
Lucille Raaberg	Cosmic	Neil McLeod
Ruth Baugh	Spanish	Rex Alstrom
Helen Gale	Footlight	Stan Tesdahl
Bonnie Burns	"Pep"	Ray Roestel



First Row: R. Rizzuto, Appa, Steele, Glass, Luse, Mulherin, M. Rizzuto, and B. J. Johnson. Second Row: Weller, Illingworth, Lowther, T. Rizzuto, Williams, McCafferty, Moffat, Anderson, McMillan, Bachman, V. Johnson, and Ludwig. Third Row: Perkins (Coach), E. Morse, B. M. Johnson, Pierce, Finch, M. Morse, Bridewell, Hewitt, Taylor, and Johnston.

## Girls' Tennis

### SINGLES

Mary Moffat  
Theresa Rizzuto  
Jerry Everett  
Rosie Rizzuto  
Agnes Appa  
Zelda Lee Anderson  
Jean Hanifen

Elvera Via  
Jerry Ludwig  
Mary Glass  
Genevieve Luse  
Ellen Morse  
Betty Mae Johnson

Betty Lou Miller  
Betty J. Johnson  
Vallilee Illingworth  
Francis Williams  
Phyllis Anderson  
Marian Finch  
Alene Steele

### DOUBLES

Bonnie Johnston (captain), Violet Johnson.  
Margaret Taylor, Betty Hewitt.  
Eva Jean Bridewell, Evelyn McCafferty.  
Jackie Lowther, June Pierce.  
Shirley Bachman, Delores McMillan.

Marian Morse, Mery Lee Mulherin.  
Gerry Grant, Audrey Grein.  
Lillian Harding, Eileen Williams.  
Jo Weller, manager.

## Girls' Volleyball

----



First Row: Puffer, Johnson, Johnston, and Sicilia. Second Row: Eng, Christianson, and Perry.

## Girls' Basketball

----



First Row: Harrah, McCafferty, and Frye. Second Row: Anthony, and Crain. Third Row: Cafferro, Wilson, and Beck.

## Badminton



First Row: Eng, Dahl, Dunn, Forrester, and Houston. Second Row: Schiewe, Scott, Harding, McMahan (Coach), and Hassell.

## Tumbling



First Row: Gilbert, Grumbly, Grein, Gant, Womble, and Houston. Second Row: Mercant, Tobler, Harrah, Steele, Gendreaux, and Gulusis. Third Row: Manning, Saxe, Aigner, Coffey, Schultz, Cook, and Johnston.



Fred Pierce, on train: Conductor, will you waken me when we reach Podunk? (jokingly) And if I don't waken, toss me out, bag and baggage.

(Fred awoke twenty miles past Podunk and cussed the conductor.)

Conductor, calmly: You are a good man to cuss, but you can't cuss like the man I tossed out at Podunk.

"Stand up!" shouted the colored evangelist, "if you want to go to heaven."

Everyone got up except one old man.

"Don't you want to go to heaven?" asked the preacher loudly.

"Sho' do," said the old man, "but I don't want to go with no excursion."

Jean Coffee: Grandma, did you ever flirt when you were young?

Grandma: Yes, dear. I'm afraid I did.

Jean: And were you ever punished for it?

Grandma: Well, I married your grandpa.

Doris Hedstrom: How long have you worked in this office?

Rex Alstrom: Since they threatened to fire me.



MAIN 4233

N. 318 DIVISION

CONGRATULATIONS  
to Graduates of 1940

CERTIFIED FOOD  
SHOP

N. 2001-03 Division St.

3 Deliveries Daily

BRDY. 5262



*Gifts . . . . .*

*of All Kinds Are Advantageously Bought*

*at* SARTORI

33 years of square dealing has brought Confidence to the Jewelry buying public of the Inland Empire. . . Here you can buy just the watch you want at the price you want to pay.

HAMILTON—ELGIN—LONGINES—GRUEN

We Are Official Manufacturers of Your School Pins and Rings

Avail Yourself of  
SARTORI'S Helpful  
Credit Service



On the East Side of  
Wall St. Between  
Riverside and Sprague

NORTH 10 WALL STREET

Bill Alfstad: I happen to have a great deal of influence with the press. If it's any news to you, I'm an old newspaperman myself.

Dorothy Fuller: Why did you ever quit?

Bill: Well, I found there wasn't much money in old newspapers!

Man (to wife): What do you mean by saying that I have been deceiving you for years?

Wife: I just found out that the government allows you \$2,500 a year on your income tax and you allow me a measly \$10 a month.

Judge: Couldn't this case have been settled out of court?

John Sampson: Sure and that was just what we were trying to do when a couple of dumb cops butted in.

Stan Wagner: When I sing I get tears in my eyes. What can I do to stop that?

Mrs. Swenson: 'Try stuffing your ears with cotton.

Willis Clem (to clerk): I want to buy a pillow case, please.

Clerk: What size?

Willis: I'm not sure, but I wear a size 7 hat.

FOR PROMPT SERVICE AND  
GOOD CANDIES

Call

G. PHILO

Brdy. 3344W

DOERR'S  
JEWELRY

717 Riverside Ave.

Our 51 years of business success assures you of the dependability of everything in the jewelry line. All kinds of jewelry, remodeling and certified watch repairing.

**RED & WHITE**  
THE BEST THE MARKET AFFORDS

Congratulations to the  
June, 1940, Class  
John R. Rogers High School

FROM YOUR NEIGHBORHOOD

Red & White Stores

# Congratulations... to GRADUATES



*and best wishes for continued success. . . . To undergraduates, a word of encouragement, looking to the day when you, too, will achieve this memorable milestone.*



## *Boge Bros.*

Makers of

BOGE'S BREAD, BUNS  
*and a wide variety of Sweet Rolls*

Mr. Jinnett: Why are you so late this morning, Leonard?

Leonard Johnson: Oh, forgive me, sir, but this time it is all your fault. You told me in order to get from my house to school, I should wait on the corner and take the fifty-fourth bus.

Mr. Jinnett: Well, did you take the fifty-fourth bus?

Leonard: Oh, yes sir, but it seemed a shame to let the other fifty-three go by!

Leroy Whipple: Today is the big birthday party.

Myrtle Parker: Really? Who's birthday is it?

Leroy: The Dionne babies. The Quintuplets are three today.

Myrtle: Oh! That's too bad. Did two of them get away?

Mr. Harris: Do you desire to become my son-in-law?

Roy Allen: No, I don't. But if I marry your daughter, I don't see how I can get out of it.

Says Carol Vincent: "Flattery is 90 per cent soap, and soap is 90 per cent lye."

TO ALL OUR FRIENDS  
THE  
*Garden*  
BALLROOM

WISHES  
PROSPERITY AND HAPPINESS  
DURING THE YEARS  
TO COME

Large Chaperoned Groups Will  
Be Welcomed and Rate Con-  
cessions May Be Obtained

SCHOOL SUPPLIES,  
CANDY, GUM

Stop and Get Them at  
**Blodgett's**

BENEKE SEED CO.

Pet Supplies, Seeds, Fertilizers  
Dairy, Orchard and Poultry  
Supplies

915 W. FIRST  
Riv. 4149

23 Years on North Monroe

SKY'S  
Cleaners

Sky Hulett, Mgr.



BROAD. 0651

Suits to Order—Expert Repairing—  
Call for and Delivery Service.  
Moth-Proof Cleaning.

NORA AND MONROE



Viola Neff, at riding academy: I would like to rent a horse.

Otler: How long?

Viola: The longest you've got. There'll be five of us going.

Mr. Tewinkel: Here's the first bit of news: Mattress burns as radio singer sings in bed. Now what's your headline?

Warren Franklin: Man Broadcasts From Hot Springs.

I don't care if he's fat or thin,  
In time I could get used to him,  
I don't care if he's got any dough,  
Just so he'll come and be my bean.

Harry Wagner: Waiter, have you forgotten me?

Waiter: No, sir, you are the gentleman with the pickled pig's feet.

And then there was a boy who flunked physiology because he was caught counting his ribs during an exam.

Johnny Westland wears flesh colored stockings with holes to match.

*It Is Easy to Dry Dishes and Polish Glassware With*

## RED BIRD Tea Towels

These Unusual Dish Dryers Are Lintless and Highly Absorbent and Are Ready to Use Without "Breaking In"

### *An Ideal Gift*

Sold in Most Retail Stores

Originated and Manufactured  
Only by

**SPOKANE TOILET  
SUPPLY CO.**

## *After High School, What?*

Your swiftest entrance to the business world is through the  
**KELSEY-BAIRD SECRETARIAL SCHOOL . . . WHY?**

1. **Personal attention**—thus assuring you of the fastest progress possible. Your rapid advancement here means real money saved in tuition and supplies.
2. **University trained teachers** to give you the advantage of thorough instruction.
3. **Up-to-date equipment** to train you on the newest machines to fit yourself into the modern business offices.
4. **Employment service** to place you in a good position that you have been trained to fill capably.

## Kelsey-Baird Secretarial School

Hutton Building

Main 6746



Matched Sets, \$3.95 up.  
Pens, \$2.75 up. Pencils,  
\$1.00 up.

LAUNCH a graduate on his career with THE tools needed to apply his education every day—SHEAFFER'S, the ONLY LIFETIME Pens (Identified by the White Dot), matched with FINELINE Pencils. Give these to a graduate and you'll live in his mind (and heart) for the rest of his life.

## SHEAFFER'S

in every new style and writing point is available at  
Fountain Pen Headquarters

**John W. Graham & Co.**  
If Its Made of Paper We Have It.

707-711 Sprague Ave.

708-716 First Ave.

Leap year, leap year, at last you're here,  
I have waited for four long years,  
You are my only pride and joy,  
For now I can propose to a boy.

I am young and full of pep,  
And I'll take a chance, you just bet,  
As a pearl I am a clam,  
But I am out to get my man.

Although you couldn't call me pretty,  
You must admit I'm plenty witty,  
My nose is broke, my eyes are crossed,  
And without my fake teeth I am lost.

Maxine Clarke: Now I'm going to take you  
to a party tonight and I want you to be on  
your best behavior. And, incidentally, don't  
forget to wash your face.

Jay Benoshek: Oh-h-h, it's gonna be formal!

We got the best chicken,—very conscientious.  
She lays seven eggs in five days, so she can  
have the week-end to herself!

As the magazine dealer said to Wes Moe  
who kept reading his magazines, "Why don't  
you get out of my Life?"

Mr. Beecher: What does diagonally mean,  
Ella McGee: Why it's a-a-a-  
Mr. Beecher: No, no. Suppose I draw a line  
from California to New York city, and another  
one from the North Pole to Texas. What would  
that be,  
Ella McGee: That would be an awful waste  
of pencils.

He stood on the bridge at midnight,  
He tickled her nose with his toes,  
For he was a little mosquito,  
And he stood on the bridge of her nose.

## George Elmer Brown

INSURANCE  
NOTARY PUBLIC

N. 5202 Market St., Spokane, Wash.

## DUTHIE SEED CO.

R. W. NEVILLE, Mgr.

510 MAIN AVE.

Spokane, Wash.

## L. G. BALFOUR CO.

of Attleboro, Mass.

MAKERS OF CLASS AND  
FRATERNAL JEWELRY

Are Pleased to Announce the  
Appointment of

*Mandell's*

611 Riverside

R. 4452

as Their Special Representatives

NOTE: Beautiful Models for  
1940 Rogers Classes Now in  
Preparation

School Letters—Chenille or Felt  
Club Emblems—Hats and Caps

See

**VARNEY**

S. 208 Howard St.

Riv. 8811



Built for and Occupied Exclusively by the Northwestern Business College

# KEEP GOING

*... That's What Gets You Places*

The more you learn—the more you'll EARN. Keep going. High school graduation is only a start toward the bigger things in store for you. Whatever road you choose, a course at Northwestern NOW will be immensely helpful . . . for better grades at college . . . for better positions in the business world.

THE BUSINESS WORLD BECKONS—Northwestern offers you practical training that has helped thousands of other High School graduates "make good." If there could be a better business college, it would be Northwestern.

*The world is calling for trained workers. Are you ready to answer the call? Step in and ask for a catalog.*

## Northwestern Business College

THE EXPERT SCHOOL

S. 317 HOWARD



A pessimist is a guy who complains that the silver lining isn't stamped sterling.

A pessimist is a person who wears smoked glasses when he orders fried eggs. He can't stand the sight of an egg sunny side up.

I sneezed a sneeze into the air;  
It fell to earth I know not where.  
But hard and cold were the looks of those  
In whose vicinity I snoze.

Jim Forsythe: Why did the little strawberry cry?

Margie Blair: Because his mother was in a jam, and his father got canned.

"Who's there?" inquired St. Peter.

"It is I," said the answer.

"Go away. We don't want any more school teachers."

Customer, to grocer: I want two tuna fish.  
Winston Taylor, grocer: You had better stick to pianos.

To Harold Griffin: Another great danger in driving with one arm is that you're likely to skid into a church.

## Correct Picture Framing

*Fine Pictures and Frames*

### LEE FRAME SHOP

1021 W. Sprague

Main 2715

COMPLIMENTS OF

### IDEAL LAUNDRY Co.

*Ideal Dry Cleaners*

E. 17 Boone Ave.

Brdy. 1200

## KEEP HEALTHY

DRINK

*Hillyard Dairy Milk*

(Perfectly Pasteurized)

## HILLYARD DAIRY

GLEN. 5176

# BURGAN'S

## Groceries

Buy Your Quality Groceries at  
Burgan Stores and Save Money!

Residence Phone Glen. 4690

*Dr. W. G. Beaumont*

PHONE MAIN 6515

209 Rookery Bldg. Spokane, Wash.

Compliments of . . .

### MADREN BROTHERS

Studebaker Dealers

HILLYARD

New and  
Used Cars

Fully Equipped  
Service Repair Shop

# *The Dorian Studio*

*Hereby Extends  
to Each and All  
of the Graduates*



ALL GOOD WISHES TO FUTURE SUCCESS

•

*We appreciate your patronage and  
will always aim to give you  
the finest in*

## *Photography*

•

# *The Dorian Studio*

436 PEYTON BLDG.

*Spokane's Leading Studio of Today*

# A GIRL AND HER DREAM

By Dottie Walker

The ship sailed lazily on moonlit sea,  
As we waltzed together-Boyer and me,  
The night and the music had magic charms,  
As I lingered in Charles Boyer's arms,  
And just as he said: "I love you dear,"  
A familiar voice rang in my ear:

Wake up  
Wake up  
It's late  
It's late

And there stood my mother, her arms  
waving,  
Intruding on my Boyer's haven.  
But I'm a persistent sailor,  
And who knows? Tonight I might meet  
Taylor.

Clerk: Good afternoon, Miss, do you want  
a pet?

Beatrice DeCheune: I don't really mind, but  
I've got some shopping to do first.

As the cannibal said when he saw the skin-  
ny missionary, "I ain't taking anything off of  
that guy."

## LOOK !

—What a parade of hits  
—What a parade of stars  
—Picture after picture

that you will want to see at

## RIALTO THEATER

HILLYARD—Watch for Play Dates

*"Well Pressed Is Well Dressed"*

## SPOKANITE Dry Cleaners—Dyers

Garland and Post—Brdy. 0542  
5126 N. Market St.—Glen. 2553

We Appreciate Your  
Patronage

## Baird-Naundorf

Dealers in

## LUMBER

Building Material  
Paint and Fuel

N. 3607 Market St. Glen. 2715

## EASTERN Outfitting Co.

809 Riverside—Spokane

For the young lady or the  
young man graduate, The  
Eastern shows . . . .

*Quality Apparel at  
Moderate Cost*

You are invited to see the new  
fashions especially bought for  
YOU.

# Conn Band Instruments

## RUSS BAILEY'S

911 RIVERSIDE

OPPOSITE POSTOFFICE

# Ruth Sampson Co.

Sheet Music Service





## FOR SALE

Bulldog for sale; will eat anything, very fond of children.

Howard Clinton: What shall I say about the two peroxide blondes who made such a fuss at the game.

Julienne Austing: Why, just say the bleachers went wild.

Nellie Lutz: I don't see how football players ever get clean.

Dorothy Kales: Silly, what do you suppose the scrub team is for?

Brenda (sneezing): Ah chew! Ah chew! Ah chew!

Cobina: Gee, kid, so do I, but you don't see me running around telling everybody.

If Confucius say as many things  
As people say he do,  
Someday I think he will come back  
To punish me and you.

The barber looked at Bud Manning's hair  
and asked him if he want it cut or just the  
oil changed.

I Liberty Market I  
G and Grocery G  
A A

CONGRATULATIONS  
CLASS OF 1940

Groceries, Meats, Fruits and  
Vegetables

N. 5109 MARKET ST.

Christian's  
Portraits

"Exquisite, but Not Expensive"

104 N. Howard Main 1025



## Graduation Portraits

● In creative sight and shadow  
artistry of camera and brush.

● For more than 25 years this  
studio has specialized in grad-  
uation portraiture and here  
you are assured of the utmost  
possible value and workman-  
ship of highest excellence.

•  
*Anguire*  
STUDIO OF  
*Modern Art*  
*Portraiture*

609  
Fernwell Bldg.

# LOST

A freskie who left Mr. Meyer's office on the first day of school in February in search of 401 and hasn't been seen since!

Mrs. MeVey: Kenny, why did you kick your little brother in the stomach?

Kenny: It was his own fault. He turned around.

Dentist: What kind of filling do you want in this tooth, miss?

Fern Baldrun: Chocolate.

## Stan Densow Electric

A. B. C. and Easy Washers—  
General Electric and Frigid-  
aire Refrigerators

PHILCO AND ZENITH RADIOS  
Batteries

GLEN. 1501

4820 N. MARKET ST.

## Hillyard Laundry

Cleaning and Pressing

Clean Clothes Are a Mark  
of Distinction

E. 3108 OLYMPIC AVENUE  
Glen. 1548

## CASEY'S DEPARTMENT STORE

"If It's Made to Wear We Have It"

We Feature PETERS  
All Leather Shoes

N. 5101 MARKET ST.  
Phone Glen. 2417 Spokane, Wash.

We Supply Your Table With the Best  
to Be Had in

Vegetables and  
Fruits

Try Us

Diamond Cash Grocery

Regal and Diamond Glen. 1664

THE . . .

## LE ROI

N5017-21 MARKET

MEATS

GROCERIES

DRY GOODS

Make the LE ROI Your Store as  
Well as Ours

"EVERYTHING TO EAT AND  
WEAR"

## MILLER - DERVANT

BEAUTY PARLORS

Costumers and Wig Makers

Masquerade and  
Theater Costumes

W. 1015-17 Riverside Main 6642

Mr. Byrne: Johnny, give a quotation from the Bible.

John Smith: Judas went out and hanged himself.

Mr. Byrne: Give another.

John Smith: Go thou and do likewise.

Mr. Doolittle had written 72.7 on the black-board, and to show the effect of multiplying by 10, had rubbed out the decimal point.

"Now, Betty," he said, "where is the decimal point."

"On the eraser," replied Betty Wyukoop.

George Cape: I'm continually breaking into song.

Mrs. Swenson: You wouldn't have to break in if you'd get the key.

"What's the idea of putting starch in the coffee?"

"I need a good, stiff drink."

Code of Joyce Fletcher and Lynn Carpenter—You can't believe anything you hear—but you can repeat it.

Famous last words (for men only): "I do."

Office and Residence Glen. 5369

**DR. G. W. LOUGHLIN**

DENTIST

E. 3003 Diamond Avenue

SPOKANE, WASH.

**JOHN C. McBRIDE**

Dental Surgeon

United Hillyard Bank Bldg.

# Congratulations, GRADUATES

YOU ARE INVITED TO VISIT THE ROYCE STUDIO  
AND COMPARE PRICES AND QUALITY

*I'm sure both will please you*

## The Royce Studio

N. 4905 Market St.

Glen. 3033

The world's greatest optimist is the old maid who pulls the folding bed down from the wall and then looks underneath it.

Studios soph: Do you know that every time I breathe a man dies?

Bored senior: Why don't you try Listerine?

Miss LeFevre: How far were you from the answer?

Harold Herbert: Two seats to the left.

Harold Irby: Does the teacher like you?

Bud Taylor: She must. Every paper she hands back is covered with kiss marks.

Connie Smith: I sing only for my friends.

Mr. Saltz: And are they still your friends when you are through?

The motto of the three little piggies—"Slop, it's wonderful!"

A pessimist is a man who looks at a doughnut and only sees the hole.

Give a girl an inch and she'll make a bathing suit of it.

## Congratulations

to the

JUNE GRADUATING  
CLASS

Broadview Dairy Co.

## GERLACH MOTOR COMPANY

Your Chevrolet Dealer

CONGRATULATIONS TO  
THE CLASS OF 1940

N. 4724 Market St. Spokane, Wash.

# Wraight's Store

Home Owned—Independent

Main and Wall Sts.

Riv. 5442

HEADQUARTERS FOR

## FORMALS

\$3.95  
and up

More and More People Are Learning the Wisdom of Shopping at

## WRAIGHT'S STORE

AT MAIN AND WALL STS., IN SPOKANE



### THE STUDENT'S PRAYER

By Felix Entenmann  
Now I lay me down to cram,  
I hope I pass this darn exam;  
But if I fail to get this junk,  
I pray the Lord I do not flunk.

### TEACHER'S PRAYER—IN RETURN

Give me a pupil who can spell,  
Who does not call his science junk,  
Who does not "cram," but studies well,  
Then I am sure he will not flunk.

### HANK'S BIKE SHOP

Bicycles, Tricycles and Sport-  
ing Goods bought, sold and  
repaired.

N. 2604 DIVISION

### Good Bye Books!



Good bye books! From now  
on you may have Reddy  
Kilowatt do the work at  
small cost.

THE WASHINGTON  
WATER POWER CO.

# DODSON'S

517 Riverside Avenue

JEWELERS FOR 53 YEARS



VICTORIA . . . Newest 15-jewel GRUEN. Yellow or  
white gold filled case.....\$29.75

Elgin, Gruen, Longines and Hamilton Watches

DIAMOND MERCHANTS

## DON'T READ THIS

Please don't read this.

This is not for you.

Don't read this.

DON'T read this—

You'll be sorry if you do.

You're bad. You read this and did you get fooled, but just the same—shame on you.

Mr. Saltz: Al, will you tell the class what an octopus is?

Lon Kelly: It must be a cat with eight sides.

Then there was Mr. Elsensohn who was calling roll. He called Bill Burkhardt's name three times and finally said, "If you're not here, why don't you say so?"

Banana peel,

Boy no see,

Fatal step;

Visiting hours 2 to 3.

Miss Perkins: Do you play golf?

Patricia Farr: Dear me, no! I don't believe I would even know how to hold the caddie.

## 'NOTHER POME

By Gerald Adams

How fat she are,

She used to wasn't;

The reason is,

She daily doesn't.

Mr. Doolittle: What is a little Eskimo with a frozen finger?

Erma Eng: I don't know. What?

Mr. Doolittle: He's a frigid midget with a rigid digit.

Success to "The Pirate Crew"

## EXCHANGE

Lumber and Manufacturing  
Company

"Everything for the Manual Arts  
Student"

# FORWARD in FORTY with KBU!

Be "tops" on the preferred list of Inland Empire Employers! Get a good job—and hold it—with KBU training! Enroll NOW without risk. Unused tuition refunded if not satisfied. New job classes organize Monday. Come!

## Choose Your Subjects

Short, intensive courses for pre-college students. Excellent faculty. Actual office training.

## Lifetime Free Employment Dept.



Qualify for KBU Lifetime FREE employment card as did Clayton Tang, Rogers high school graduate, now employed by the Mutual Life Insurance Co. of New York.



Here is Ann Wilson, Gallatin Gateway, Montana, operating new National Cash Register installment bookkeeping machine . . . used in banks, hotels and installment houses.

# KINMAN

## BUSINESS UNIVERSITY

Affiliated with National Employment Board which assures you prompt, courteous employment aid.

J. I. KINMAN,  
C. P. A., Pres.

5110 Howard  
Spokane



*So that You  
need not guess*

*We maintain ample  
equipment and an ex-  
perienced art and  
mechanical staff —  
So that our patrons  
need leave nothing to  
chance*

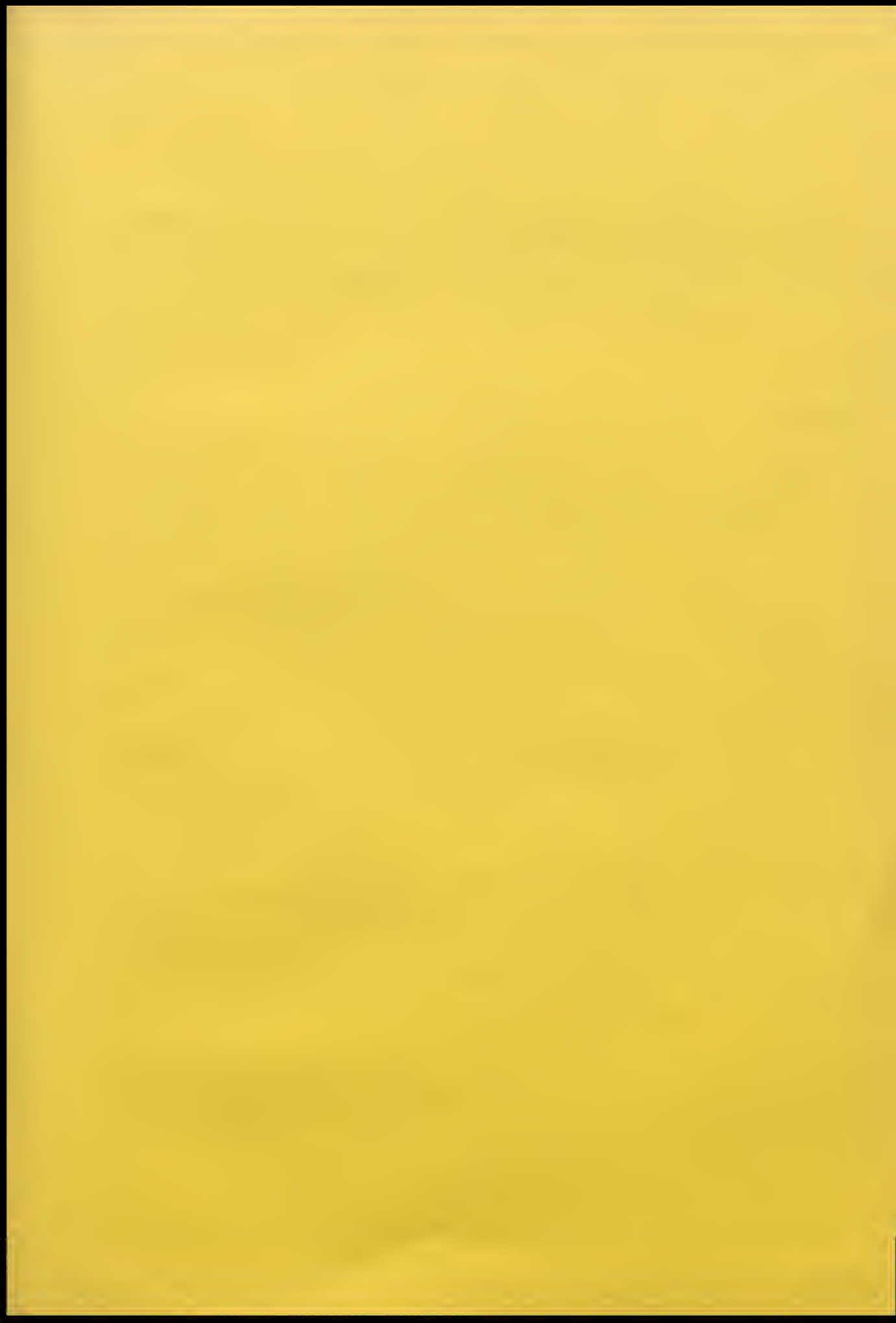
**THE  
SPOKANE AMERICAN  
ENGRAVING COMPANY**  
Established 1904

## *Autographs*





## *Autographs*







DEMCO



SPOKANE PUBLIC LIBRARY



3 7413 31249792 0

